



RESILIENCE MEASUREMENT

Are we using the right tools
for the job?

Jon Kurtz

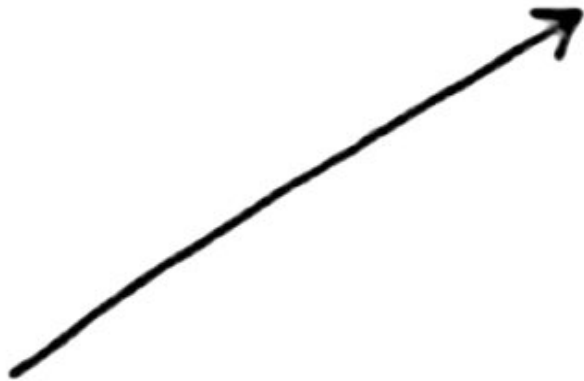
Senior Director of Research and Learning

Resilience Evidence Forum

October 2017



Where We All Agree



What people wished
resilience looked like



What it really looks like

ENHANCING RESILIENCE TO SEVERE DROUGHT: WHAT WORKS?



Evidence from Mercy Corps' PRIME Program
in the Somali region of Ethiopia

January 2017

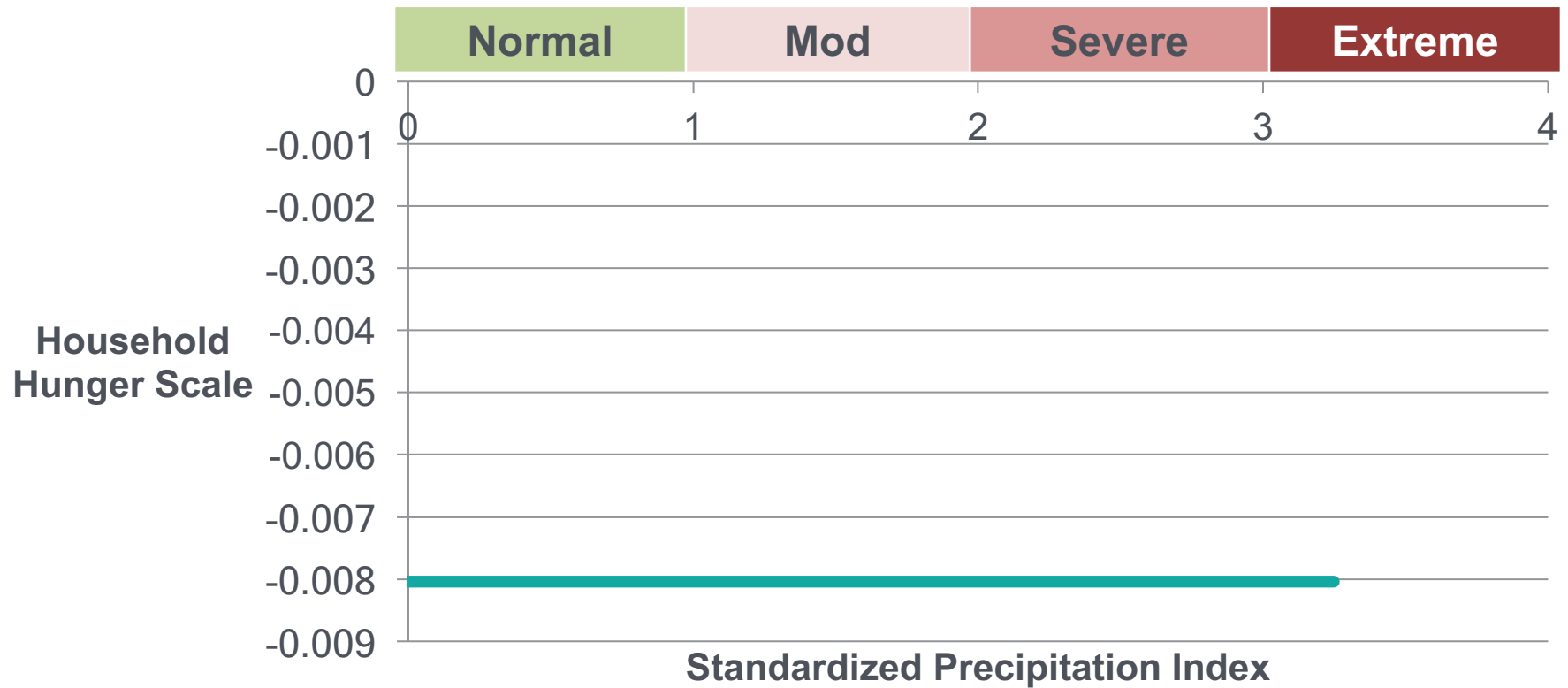




**Did the program
strengthen resilience?**

Results: Household Hunger Scale

Model 1: "Flat" Treatment Effect



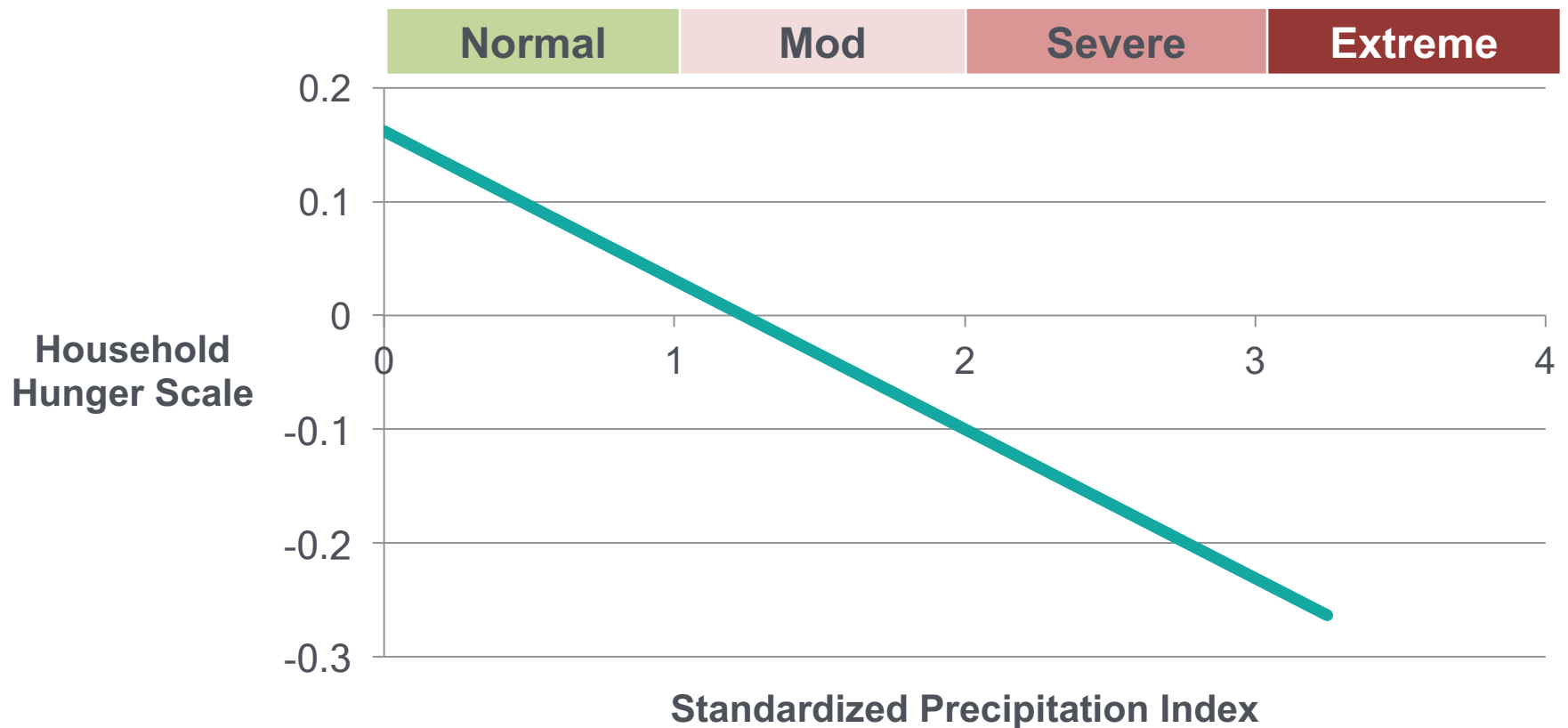
Treatment -0.00804
(-0.12)



**Was it more effective
for the worst affected?**

Results: Household Hunger Scale

Model 2: Treatment Effect with Interaction



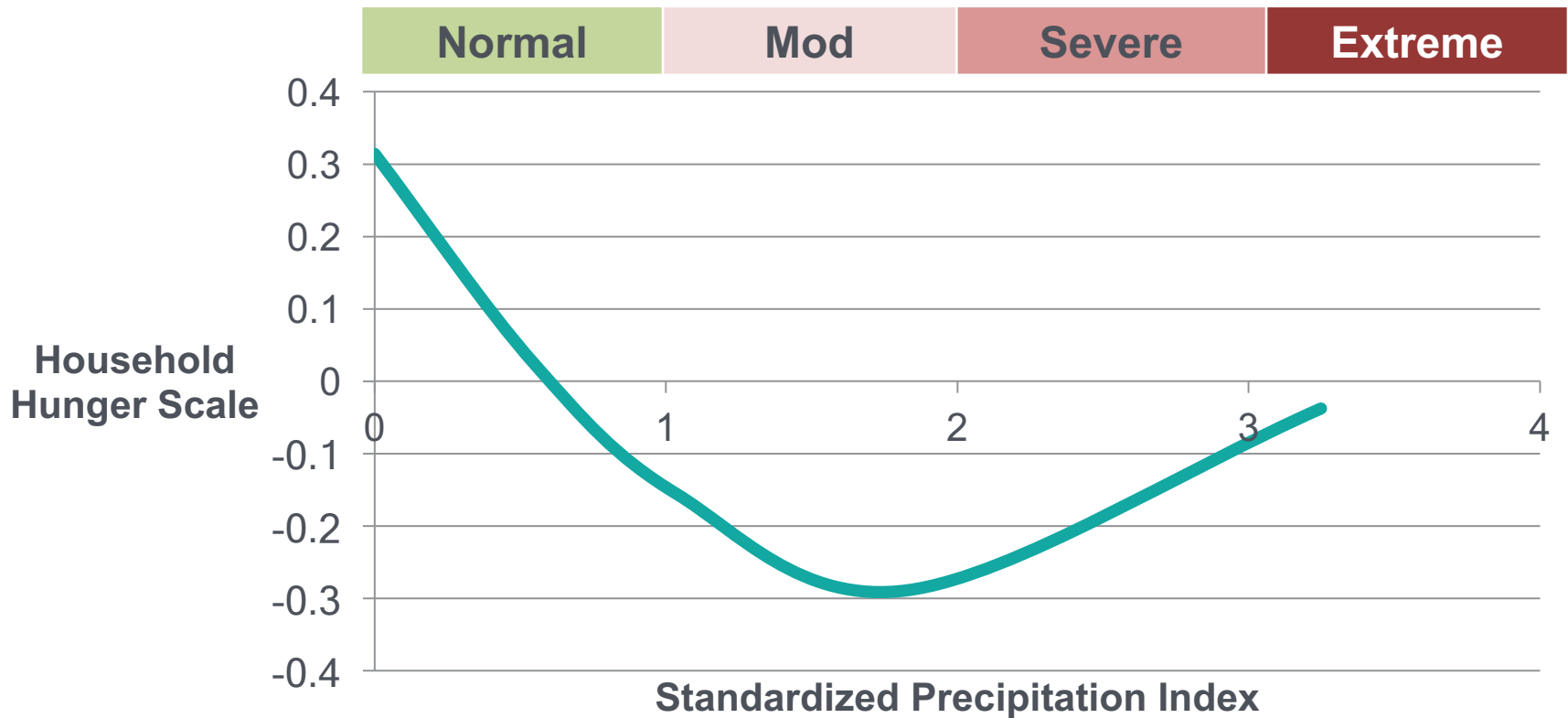
Treatment X Shock -0.131*
 (-2.16)



Up to what point was it effective?

Results: Household Hunger Scale

Model 3: Treatment Effect with Quadratic Interactions



Treatment X Shock Squared 0.156*
(2.26)





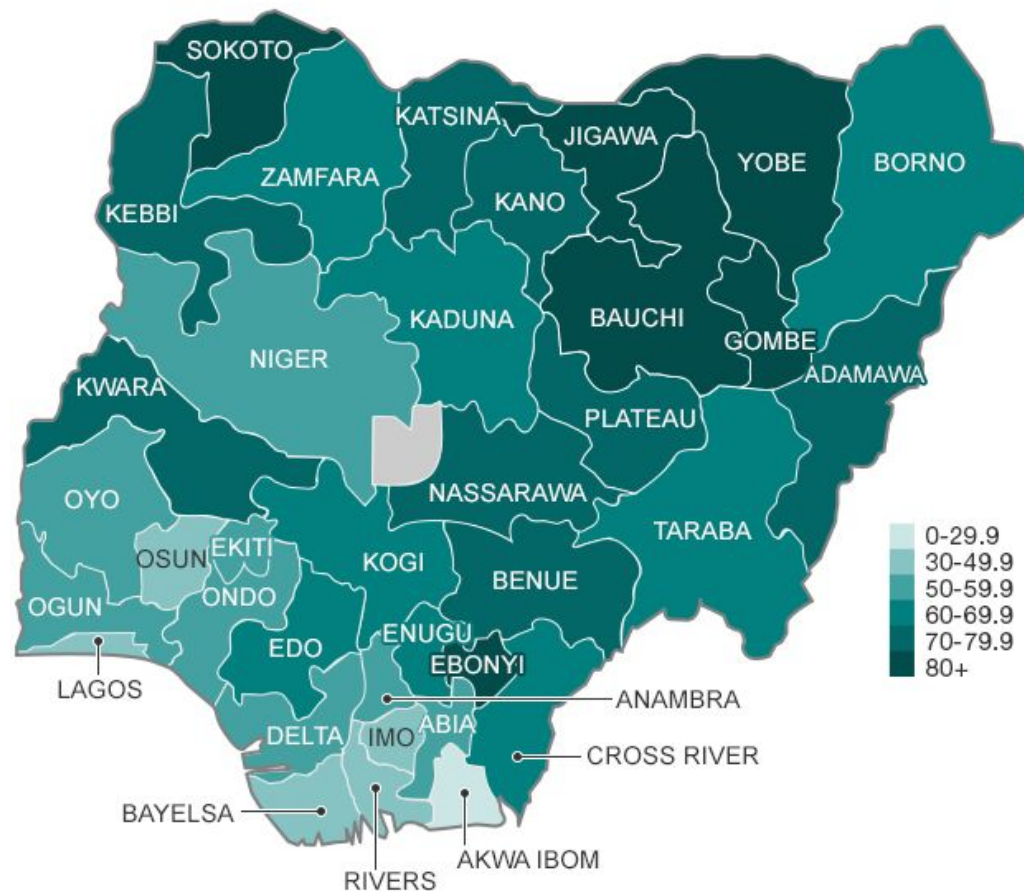
Another survey, really?



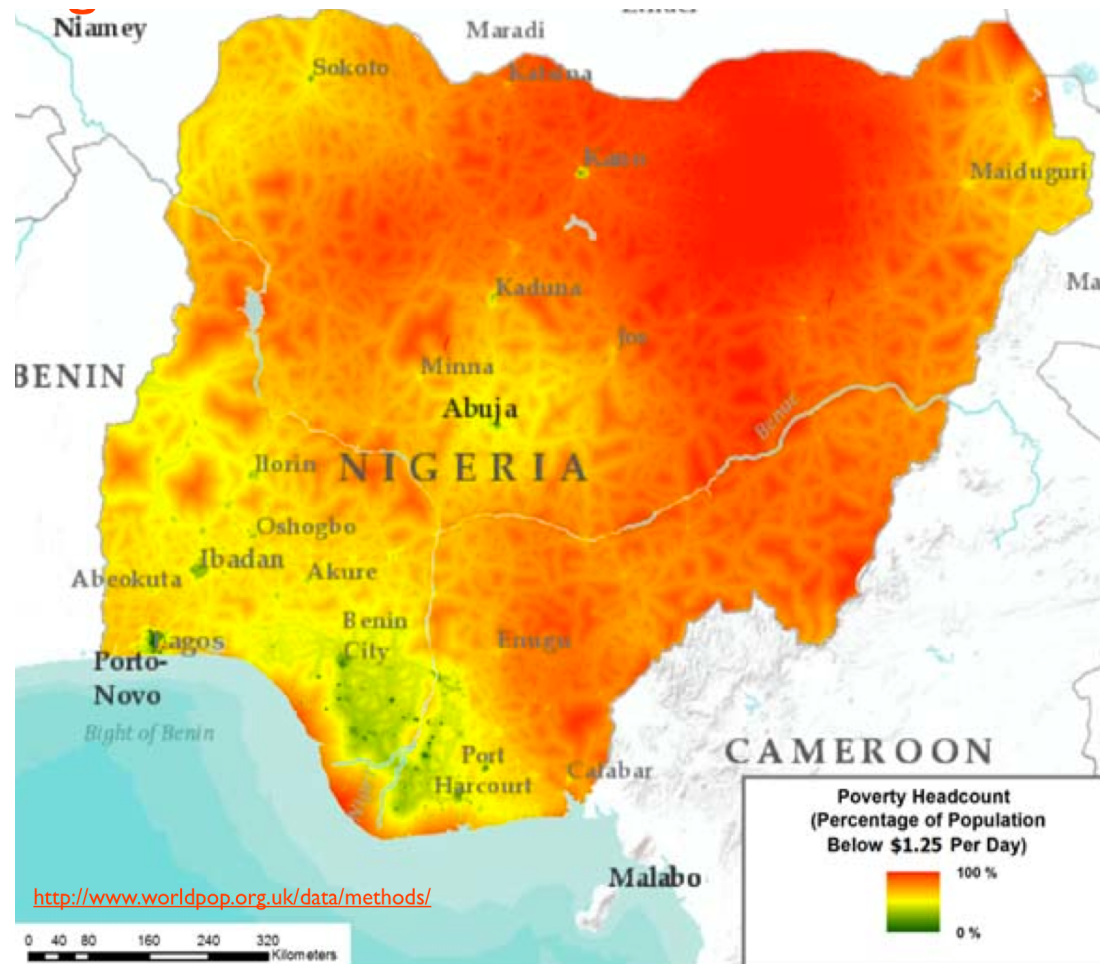
Increasing the Resolution

Poverty

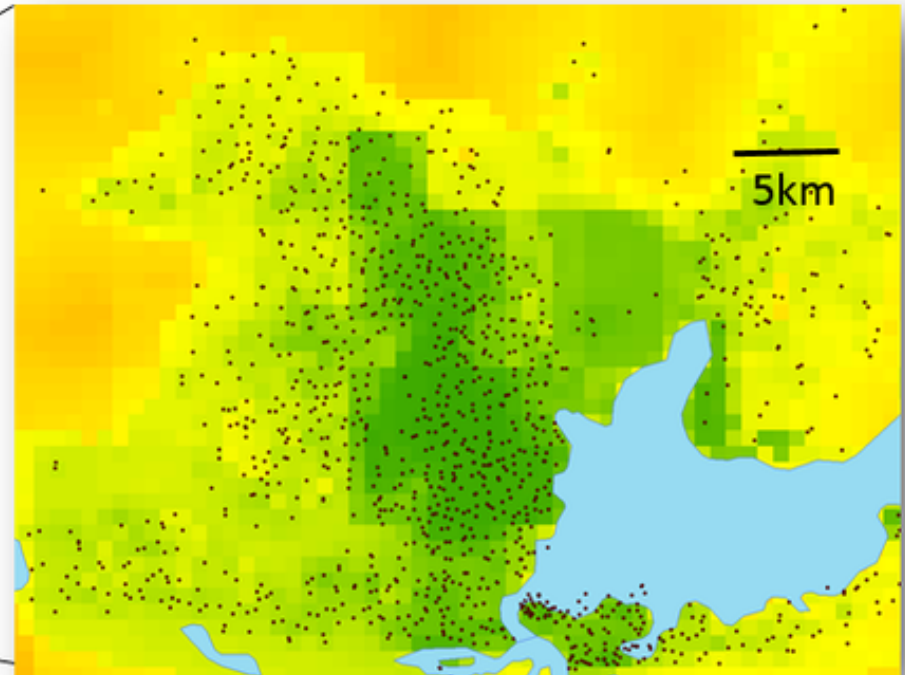
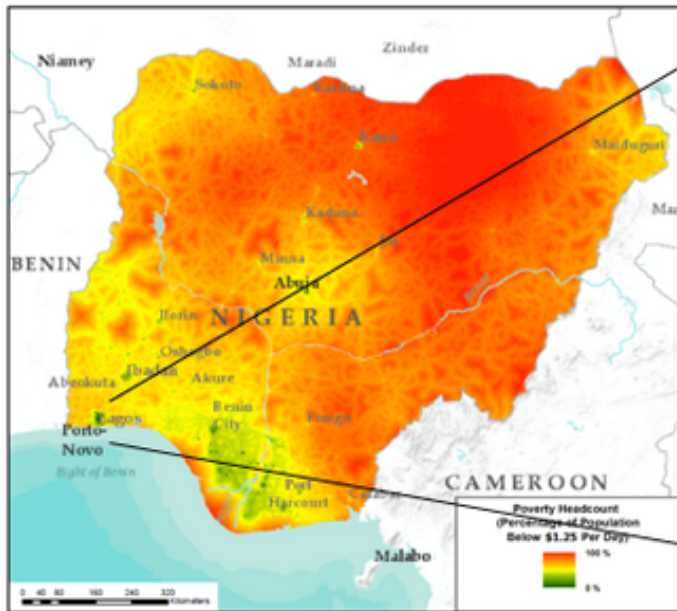
States showing % living in absolute poverty



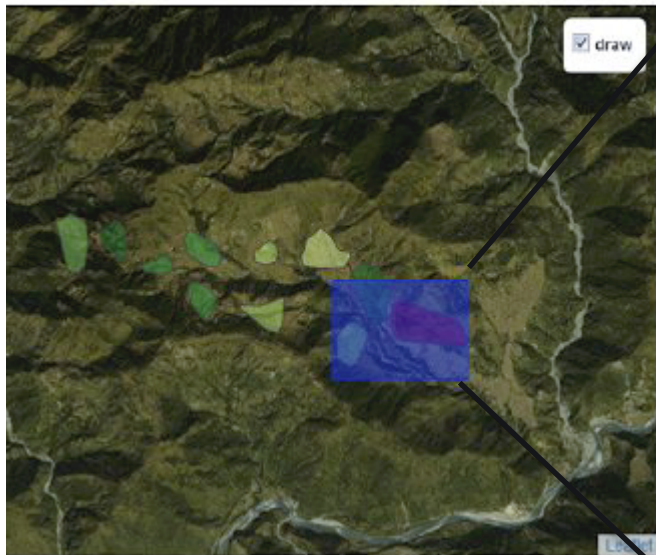
Increasing the Resolution



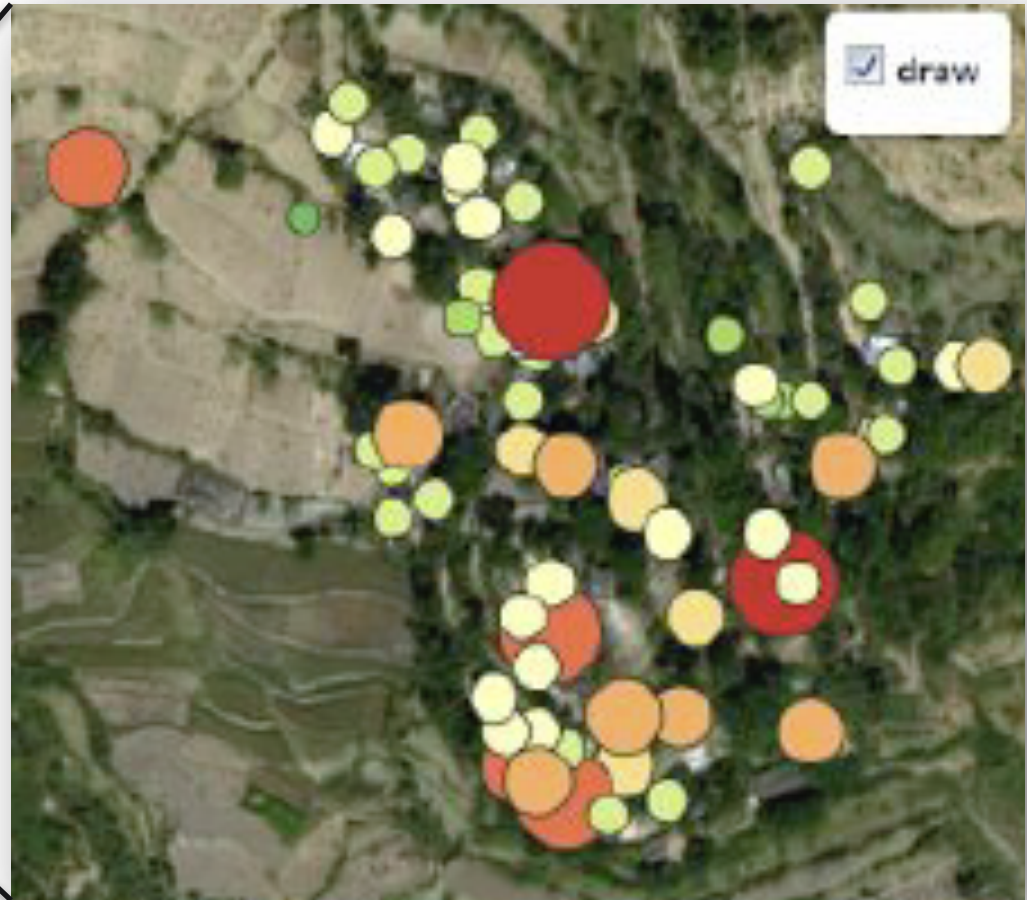
Increasing the Resolution



Increasing the Resolution



Intervention area



FCS by household

Validated CDR + Shock Data =



*Thank
You!*



JON KURTZ

Senor Director of Research and Learning

jkurtz@mercycorps.com