



**USAID**  
FROM THE AMERICAN PEOPLE

**PREG**

**PREG  
PRESENCE  
IN KENYA**

**PROACTIVE  
GOVERNMENT  
ACTION**

**PREG IN THE  
COUNTRIES**

**IMPACT**

**COLLABORATION  
. LEARNING &  
ADAPTATION**

**CONTACT  
US**



# PREG

## The Partnership for Resilience and Economic Growth

PREG brings together humanitarian and development partners to:

- Build resilience among vulnerable pastoralist communities
- Create economic opportunities
- Reduce humanitarian assistance needs to recurrent shocks

Sequencing,  
Layering &  
Integration

The PREG  
Voice

Why is  
PREG  
unique?

## Sequencing

Using a logical, sequenced phasing of humanitarian relief and development programming.

## Layering

Programming of multiple humanitarian and development assistance in targeted geographic areas, in layers.

## Integration

Humanitarian assistance programming objectives integrated into development programs and vice versa.





## Why is PREG unique?

- Focuses on collective impact
- Builds efficiency and effectiveness
- Emphasizes continuous improvement
- Promotes mutual accountability

# PROACTIVE GOVERNMENT ACTION

USAID's investment under PREG are in full partnership with the GOK and aligned to the EDE framework.



National  
Drought  
Management  
Authority

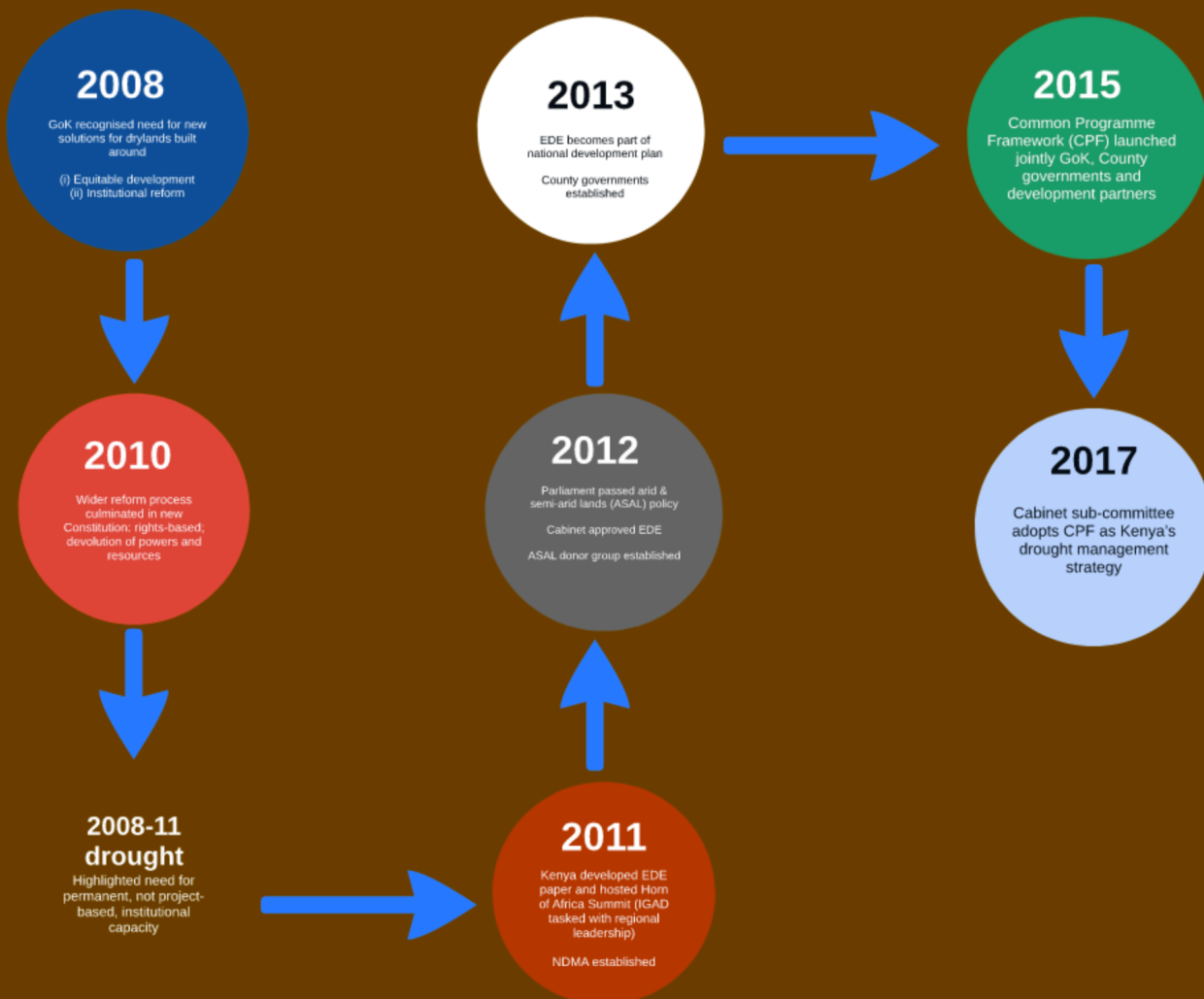
EDE  
FRAMEWORK



## National Drought Management Authority

- NDMA Act passed in 2016
- Fully costed out and integrated MTP III
- Early Response to Drought
- Livestock Insurance Program scaled and initial pay-outs made

# EDE EVOLUTION



# 2008

GoK recognised need for new solutions for drylands built around

- (i) Equitable development
- (ii) Institutional reform



# 2010

Wider reform process  
culminated in new  
Constitution: rights-based;  
devolution of powers and  
resources

# 2012

Parliament passed arid &  
semi-arid lands (ASAL) policy

Cabinet approved EDE

ASAL donor group established

# 2013

EDE becomes part of  
national development plan

County governments  
established



# 2015

Common Programme  
Framework (CPF) launched  
jointly GoK, County  
governments and  
development partners

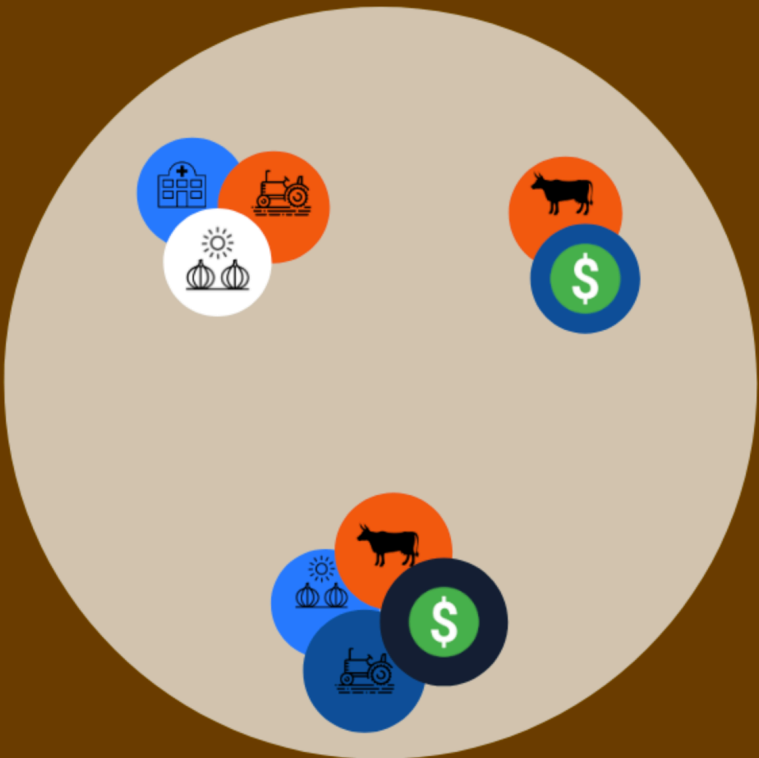
# 2017

Cabinet sub-committee  
adopts CPF as Kenya's  
drought management  
strategy

# Common Programming: Collaboration and Complementarity

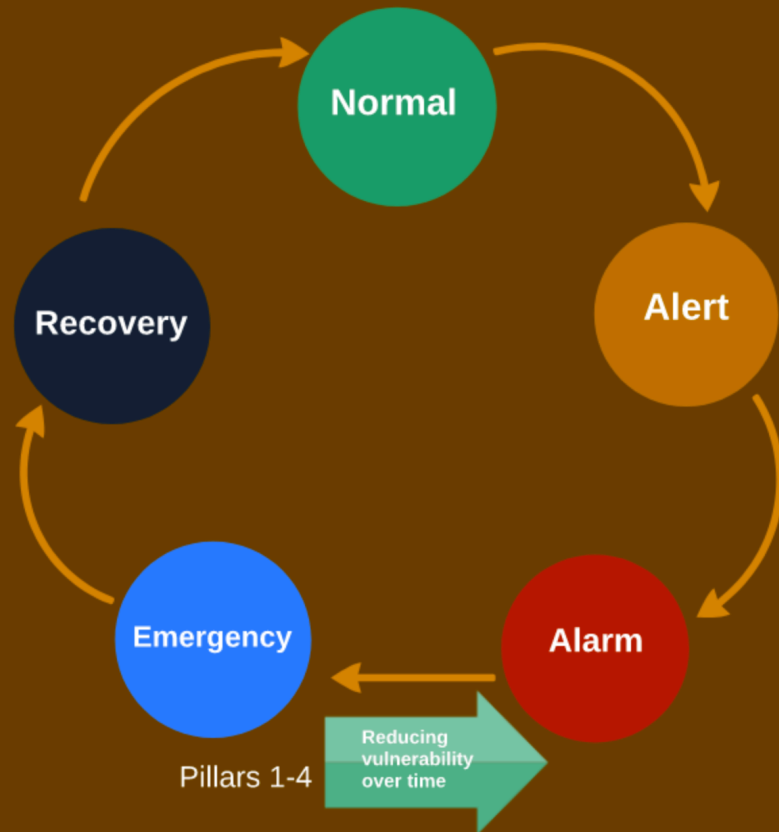
## Over space:

Projects look for synergies with others and contribute to a single results framework.



## Over time:

Long-term investments to reduce drought risk run concurrently with short-term management of drought cycle.



# EDE FRAMEWORK

EDE is a model for country led efforts to build resilience to recurrent crisis.

Implemented by sectors & counties and integrated in sector / county plans

Implemented by NDMA



## PROGRESS

- GoK adoption of EDE is deepening & broadening
- Institutional framework is in place
- Strong donor commitment / donor self-organisation
- Openness to new ideas and innovation by all parties

## CHALLENGES

- Accountability in implementation
- Impact of crisis; maintaining focus
- Private sector involvement
- Transitions in government



# PREG PRESENCE IN KENYA

4

Ministries at the national government level

9

Counties with heavy investments in

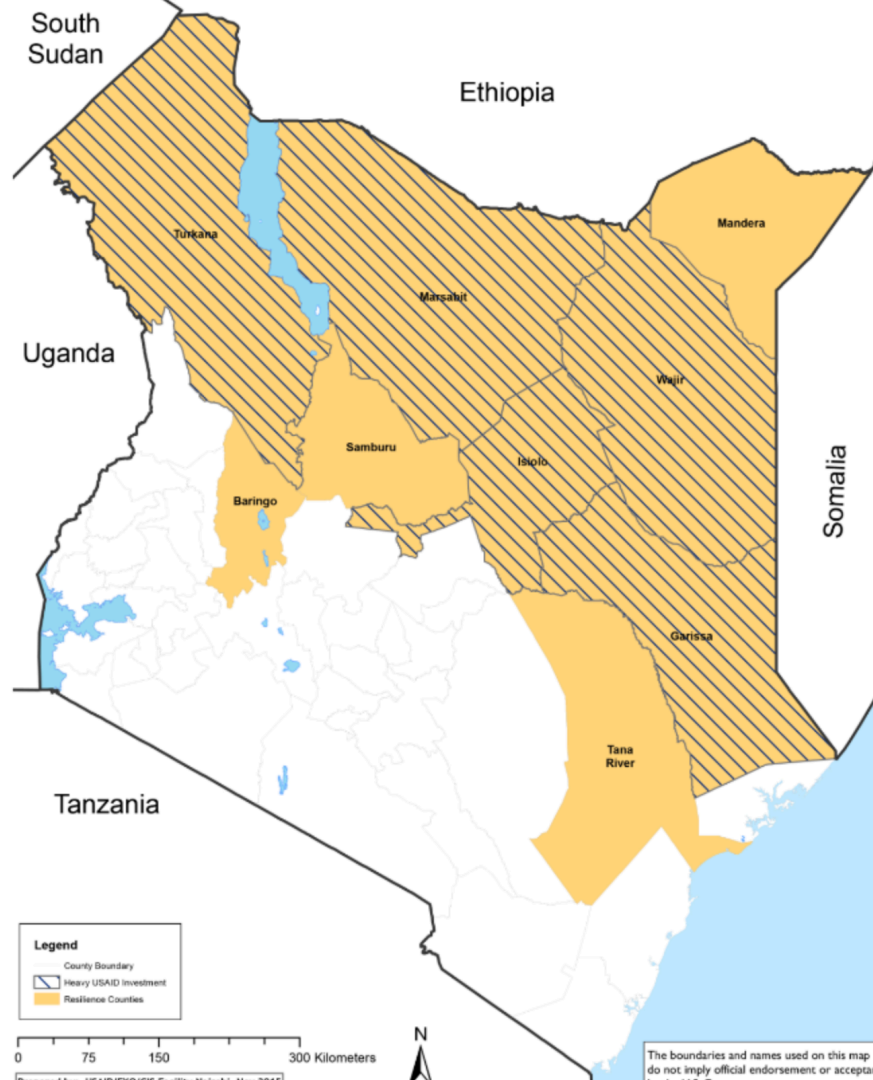
5

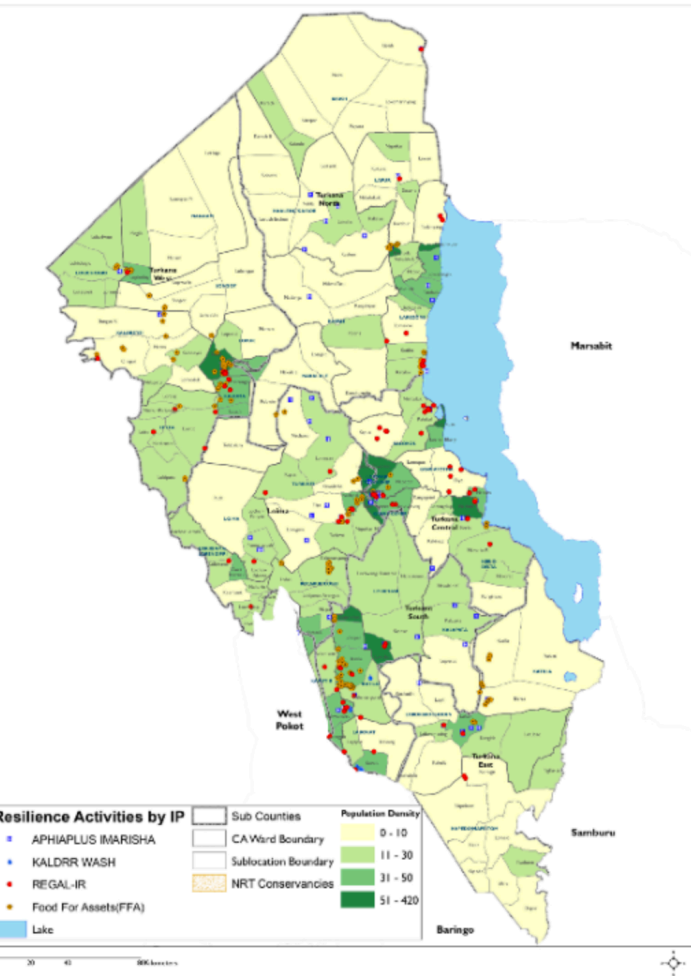
16

USAID implementing partners across different sectors

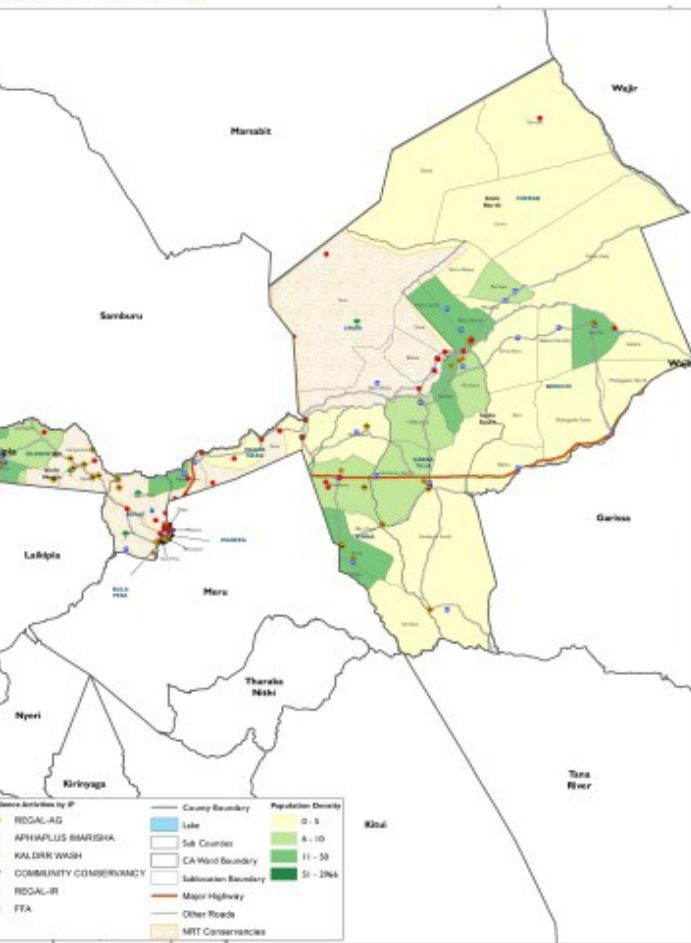
21

USAID representatives from seven offices





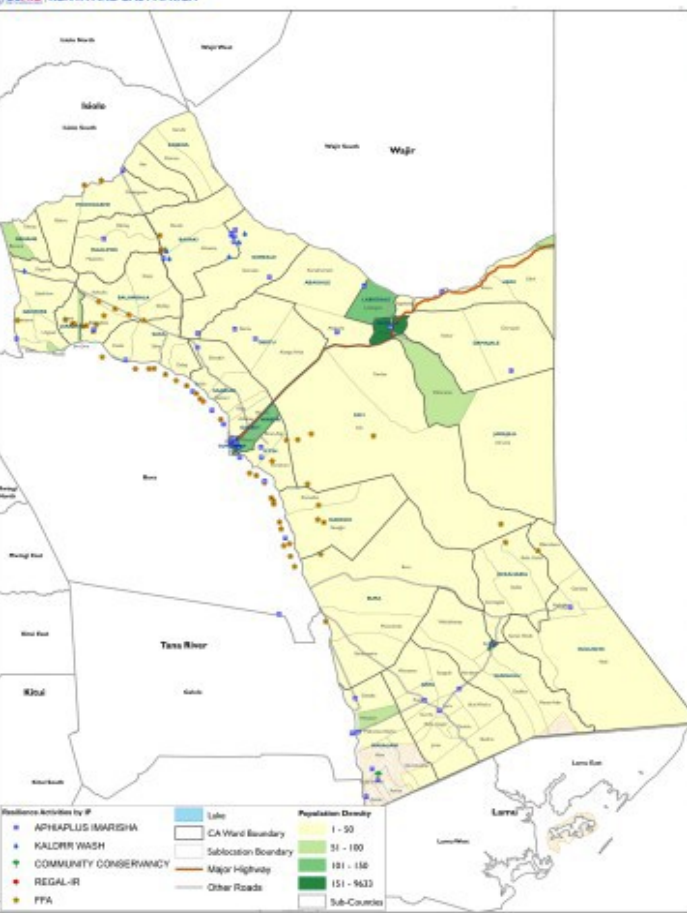
SECTOR	Number of Sites
Conflict Resolution/ Peace Building	135
DRR (Information/Awareness	87
Finance (Supported MFI's, SACCO)	5
Governance (e.g CDAP, Conservancy)	74
Health	118
Infrastructure	44
Livelihood	353
NRM (Rangeland Management)	54
Nutrition Service Delivery	57
WASH	27



SECTOR	Number of Sites
Conflict Resolution/ Peace Building	77
DRR (Information/Awareness)	34
Governance (e.g CDAP, Conservancy)	22
Health	46
Infrastructure	16
Livelihood	178
NRM (Rangeland Management)	27
Nutrition Service Delivery	66
WASH	10
<b>GRAND TOTAL</b>	<b>501</b>

# MARRISSA COUNTY

USAID | KENYA AND EAST AFRICA



Map by: USAID MWVA ERSS/ST Facility Plans/October 2016



The boundaries and names used on this map do not imply official endorsement or approval by the U.S. Government.

## SECTOR

Number of Sites

Conflict Resolution/ Peace Building 73

DRR (Information/Awareness 45

Governance (e.g CDAP, Conservancy) 21

Health 33

Humanitarian Assistance (Food) 56

Infrastructure 11

Livelihood 198

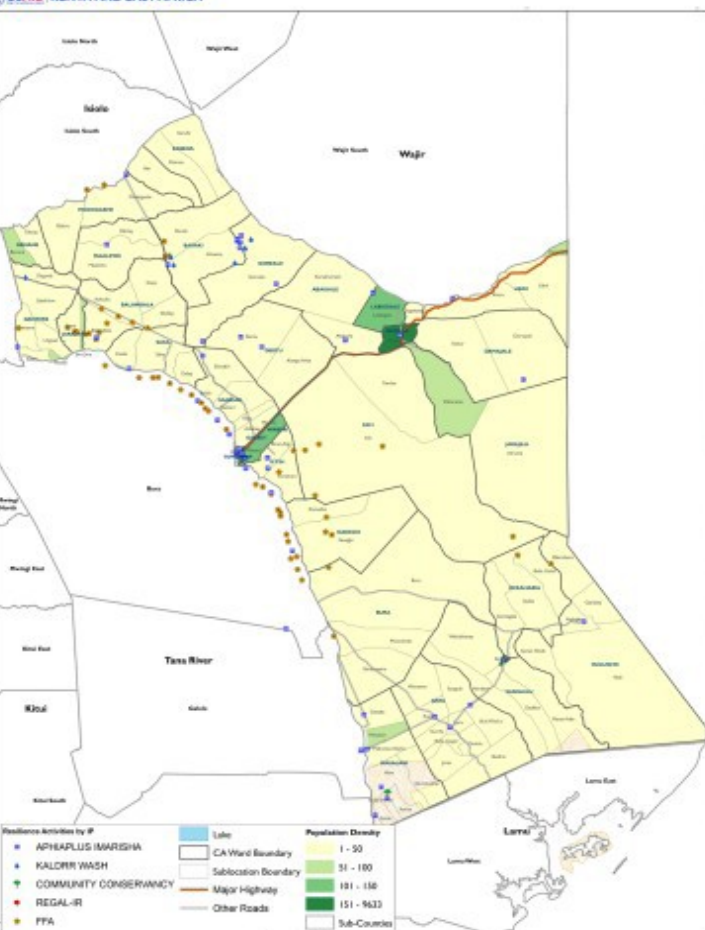
NRM (Rangeland Management) 20

Nutrition Service Delivery 62

WASH 28

# MARRISSA COUNTY

USAID | KENYA AND EAST AFRICA



Map prepared by USAID/MEVSA/ENR/S&T Facility Network, October 2015

Scale: 0 20 40 Kilometers



The boundaries and names used on this map do not imply official endorsement or approval by the U.S. Government.

SECTOR	Number of Sites
Conflict Resolution/ Peace Building	73
DRR (Information/Awareness)	45
Governance (e.g CDAP, Conservancy)	21
Health	33
Humanitarian Assistance (Food)	56
Infrastructure	11
Livelihood	198
NRM (Rangeland Management)	20
Nutrition Service Delivery	62
WASH	28

# GARISSA COUNTY



## SECTOR

Number of Sites

Conflict Resolution/ Peace Building 73

DRR (Information/Awareness 45

Governance (e.g CDAP, Conservancy) 21

Health 33

Humanitarian Assistance (Food) 56

Infrastructure 11

Livelihood 198

NRM (Rangeland Management) 20

Nutrition Service Delivery 62

WASH 28

# IMPACT

Results achieved through PREG's collective efforts in two and a half years according to a mid-2015 survey by USAID:



**36%**

Increase - Value of **livestock sales** increased from **\$94 million** to **\$128 million**



**28%**

Increase in **women's dietary diversity** in target area



**12%**

**Reduction** in the levels of **poverty** in the target areas

THE  
COLLECTIVE  
IMPACT

IMPACT OF  
USAID  
INVESTMENTS

VOICES OF  
IMPACT

A large group of people, including men, women, and children, are gathered under the shade of a massive, ancient-looking tree in a dry, open landscape. Some people are sitting on colorful plastic chairs arranged in a circle, while others stand around. In the background, there are several traditional dwellings with conical thatched roofs. The scene suggests a community meeting or a training session in a rural, arid environment.

## THE COLLECTIVE IMPACT

A shared commitment by PREG partners to implement activities in a way that supports and is coordinated with the action of others.

- Partners have a common agenda
- Provides an opportunity for learning
- Shared measurement
- Mutually reinforcing activities
- Continuous Communication
- Backbone Support



# THE COLLECTIVE IMPACT

A shared commitment by PREG partners to implement activities in a way that supports and is coordinated with the action of others.

- Partners have a common agenda
- Provides an opportunity for learning
- Shared measurement
- Mutually reinforcing activities
- Continuous Communication
- Backbone Support

# IMPACT OF USAID INVESTMENTS


- **ASSET BUILDING** - More than **700,000** people supported (Oldonyiro Livestock Market, Merille Market, Tiyafarm, Moruese).
- **COMMUNITY EMPOWERMENT** – Nearly **600,000** people empowered to leverage **\$16.4 million** of public and private resource.
- **ACCESS TO WATER AND SANITATION** - More than **255,000** people with new access to **WASH** services.
- **LIVESTOCK** – **20** markets developed to benefit **44,197** households in **5** ASAL counties.
- **NATURAL RESOURCES MANAGEMENT** - community-based governance managing over **4.0 million** hectares of grazing land.



"We are strengthening communities  
before a crisis hits."

Robert F. Godec  
U.S. Ambassador to Kenya



A health worker in an orange shirt is washing a young child's hands with soap at a dispensary. The child is wearing a white dress with red polka dots. A large white plastic jug is hanging from a wooden post, and a blue and yellow packet of 'Musha' soap is attached to the post. The background is slightly blurred, showing other people in a community setting.

“The community has benefited a lot from these health and sanitation facilities. In the past children under five years suffered from waterborne diseases such as diarrhea but since these facilities were built those cases have reduced significantly.”

**HEALTH WORKER- KAITESE DISPENSARY**

With this canal I now grow enough to feed my family  
I can sell to others to raise school fees for my children.  
My herd has also increased due to the availability of  
water from the farm."

- DAVID EKUTAN LOKADOBONG - TIYA.



"Harvest in the midst of drought"

Robert F. Godec  
U.S. Ambassador to Kenya



# COLLABORATION, LEARNING & ADAPTATION

Strategic collaboration and coordination leads to greater collective impact for beneficiaries.

Collaboration

Learning

Adaptation

# COLLABORATION





LEARNING





ADAPTATION



**CONTACT US**

**MISSION CONTACT**

Jennifer Maurer  
Kenya Resilience Coordinator



Email: [jmaurer@usaid.gov](mailto:jmaurer@usaid.gov)



[www.usaid.gov](http://www.usaid.gov)