



Understanding and Measuring Resilience

Part 1: Context and Capacity

Eric Vaughan
March 5, 2015

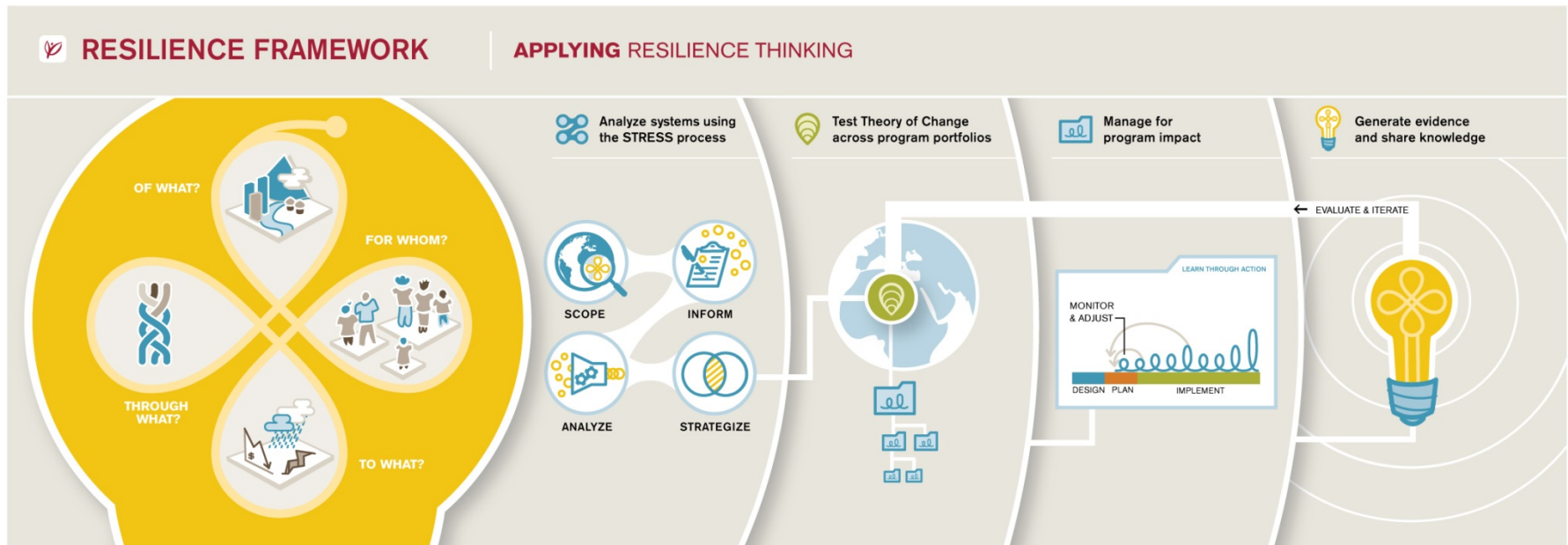


RESILIENCE AT MERCY CORPS

RESILIENCE AT MERCY CORPS

The capacity of communities in complex socio-ecological systems to learn, cope, adapt and transform in the face of shocks and stresses.

Equipping Program Teams with the ability to apply a Resilience Lens



RESILIENCE AT MERCY CORPS



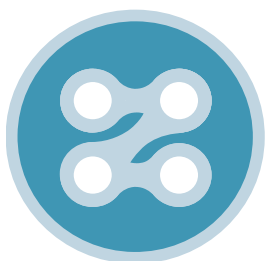
Strategic Resilience Assessment



STRESS PROCESS



RESILIENCE AT MERCY CORPS



STRESS PROCESS

What Makes it a STRESS?

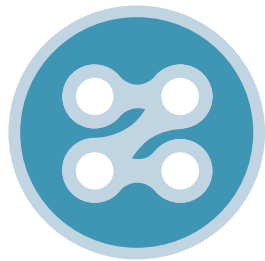
- Designed around the **4 Resilience Questions**
- **Collaborative** Sharing & Learning (*Internal and External Participants*) throughout the process
- Integrated systems approach using a systems mapping process – **“Sector Neutral”**
- A resilience lens, but focused on **Long term outlook** and **higher-level well-being outcomes**
- Development of measurable strategies for building resilience through a **ToC** based **on key capacities**



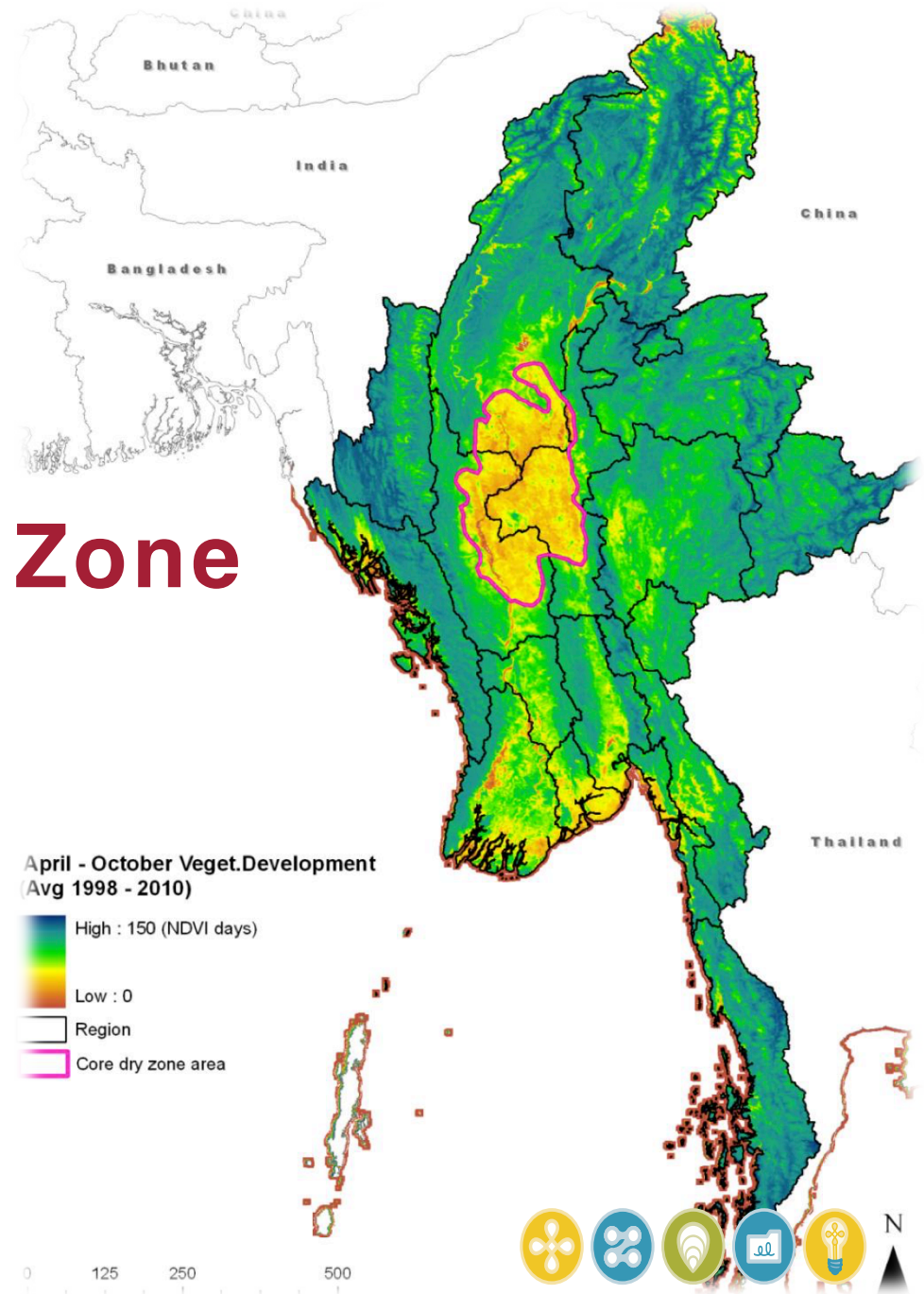
RESILIENCE AT MERCY CORPS



Myanmar's Dry Zone



STRESS



RESILIENCE AT MERCY CORPS



STRESS Application – Myanmar's Dry Zone

SCOPE

Process – *Staffing, Budgeting, Timeframe*

Background Research – *Literature Review, Interviews*

Essential Rationale

- High Population Density is high, Food Insecurity, Malnutrition
- Highly susceptible to environmental shocks - **Annual Rainfall totals are low, Unevenly and Erratically Distributed**
- Majority are dependent on Agriculture-related livelihoods (88%) – *JICA, 2010*



RESILIENCE AT MERCY CORPS





STRESS Application – Myanmar's Dry Zone

SCOPE

Research Questions

- ✧ What is the potential for agricultural based communities in the Dry Zone of Myanmar to be harmed by **ENVIRONMENTAL**, **GOVERNMENT**, and **MARKETS** pressures?
- ✧ What **INTERACTIONS** exist between identified **PRESSURES** and **LIVELIHOODS**?
- ✧ How can key resilience capacities be **STRENGTHENED** through **TARGETED DEVELOPMENT STRATEGIES**?



RESILIENCE AT MERCY CORPS

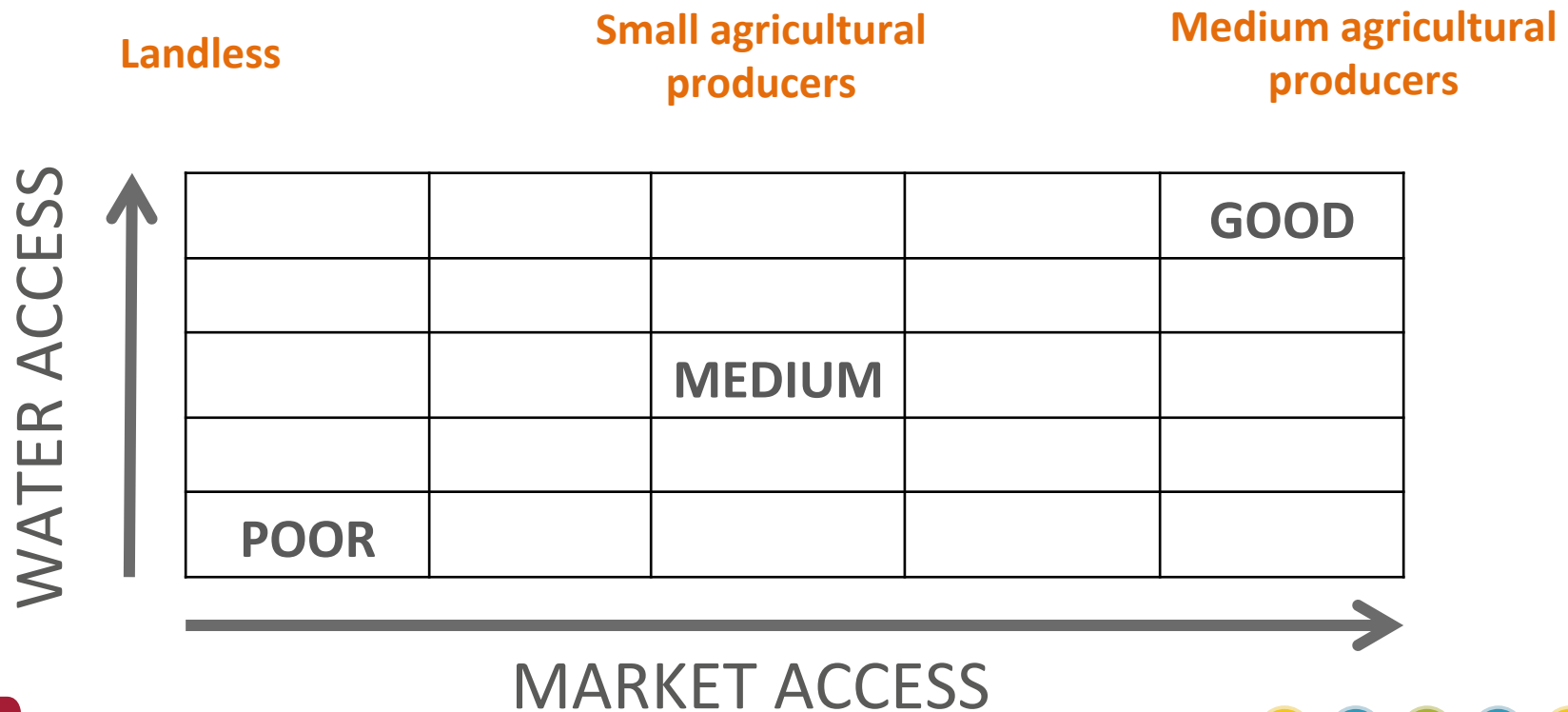




STRESS Application – Myanmar's Dry Zone

SCOPE

Agricultural-Based Communities



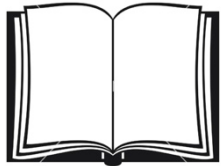
RESILIENCE AT MERCY CORPS





STRESS Application – Myanmar's Dry Zone

INFORM



- Background Literature Review



- Expert Interviews

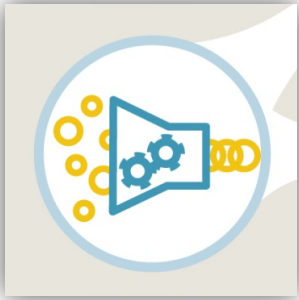


- Community level Field Research
(Myanmar Development Research)



RESILIENCE AT MERCY CORPS



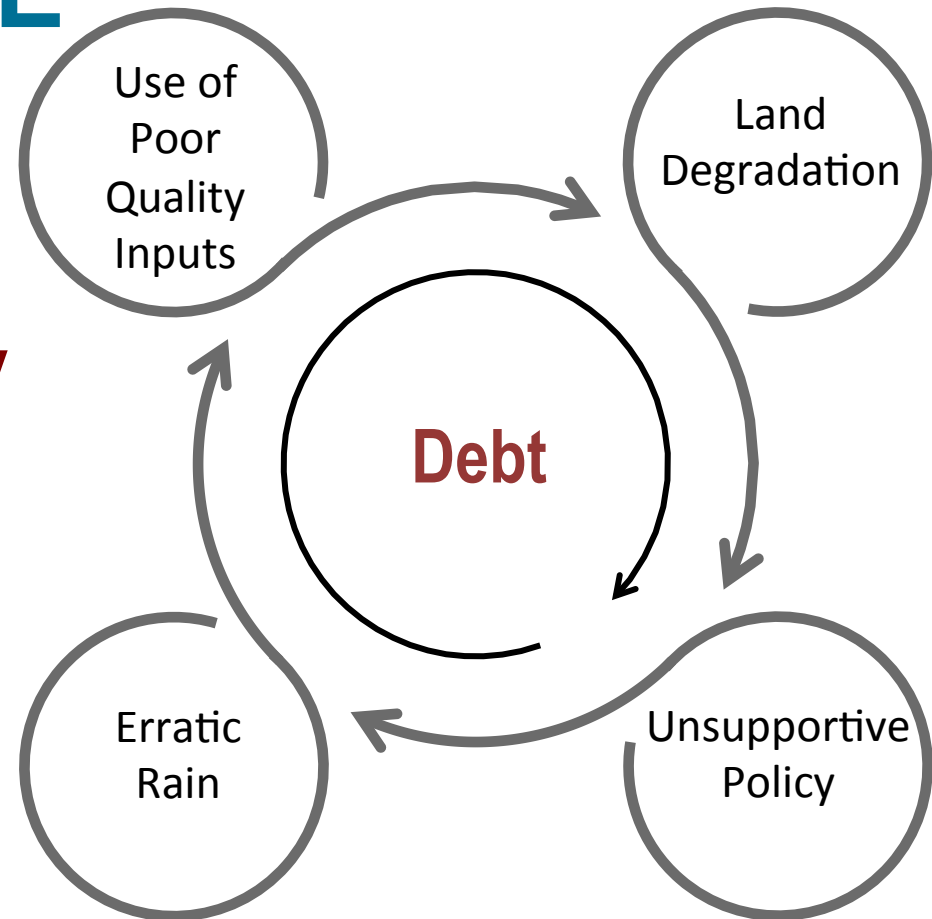


STRESS Application – Myanmar's Dry Zone

ANALYZE

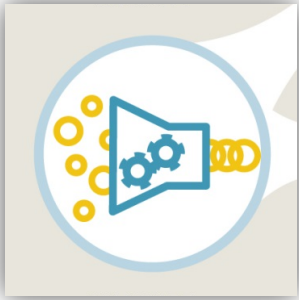
Cycle of Vulnerability

Interactions detailed in
problem trees



RESILIENCE AT MERCY CORPS

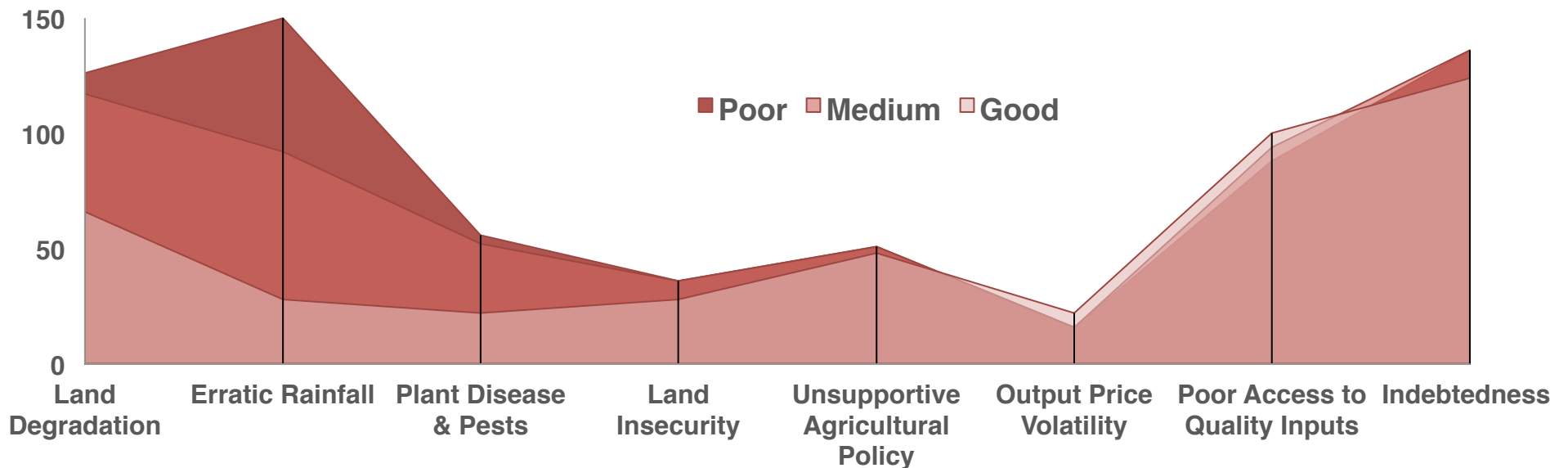




STRESS Application – Myanmar’s Dry Zone

ANALYZE

Differences in the Impact of Shocks & Stresses By Type of Villages



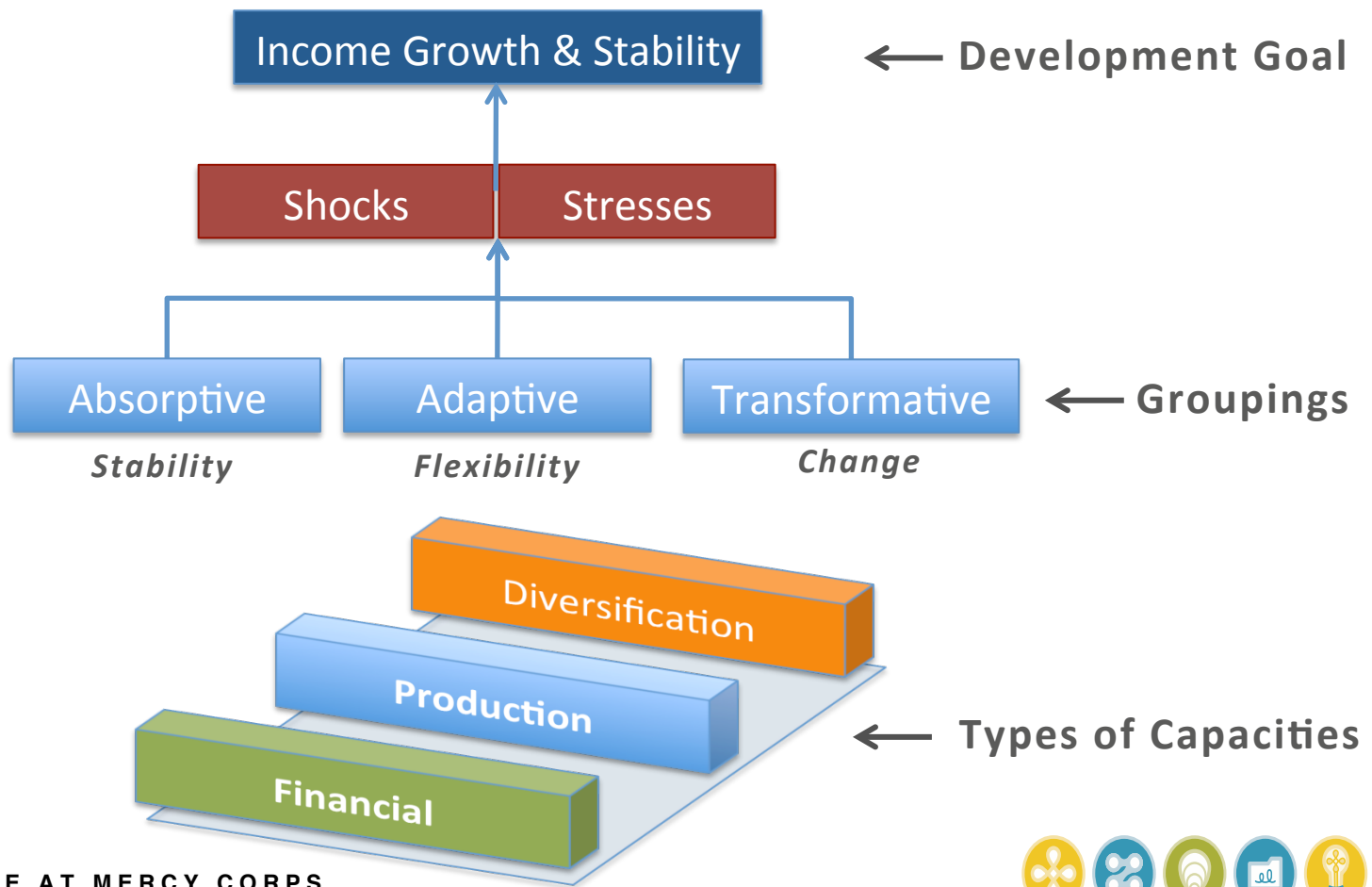
RESILIENCE AT MERCY CORPS





STRESS Application – Myanmar's Dry Zone

STRATEGIZE ToC Structure



RESILIENCE AT MERCY CORPS





STRESS Application – Myanmar’s Dry Zone

STRATEGIZE Priority Capacities

	<i>Absorptive</i>	<i>Adaptive</i>	<i>Transformative</i>
<i>Financial</i>	Informal Safety Nets Hazard Insurance	Inst. Savings & Loans	Formal Safety Nets
<i>Production</i>	DRM Productive Assets Soil & Water Mngmt	Market Info Weather Info	Input Supply Chains Infrastructure NRM Irrigation Water Technical Services
<i>Diversification</i>		Multi-Crop Production Seed Multiplication Export Liscensing Certified Seed	Off-Farm Supply Chains Vocational Training



RESILIENCE AT MERCY CORPS

