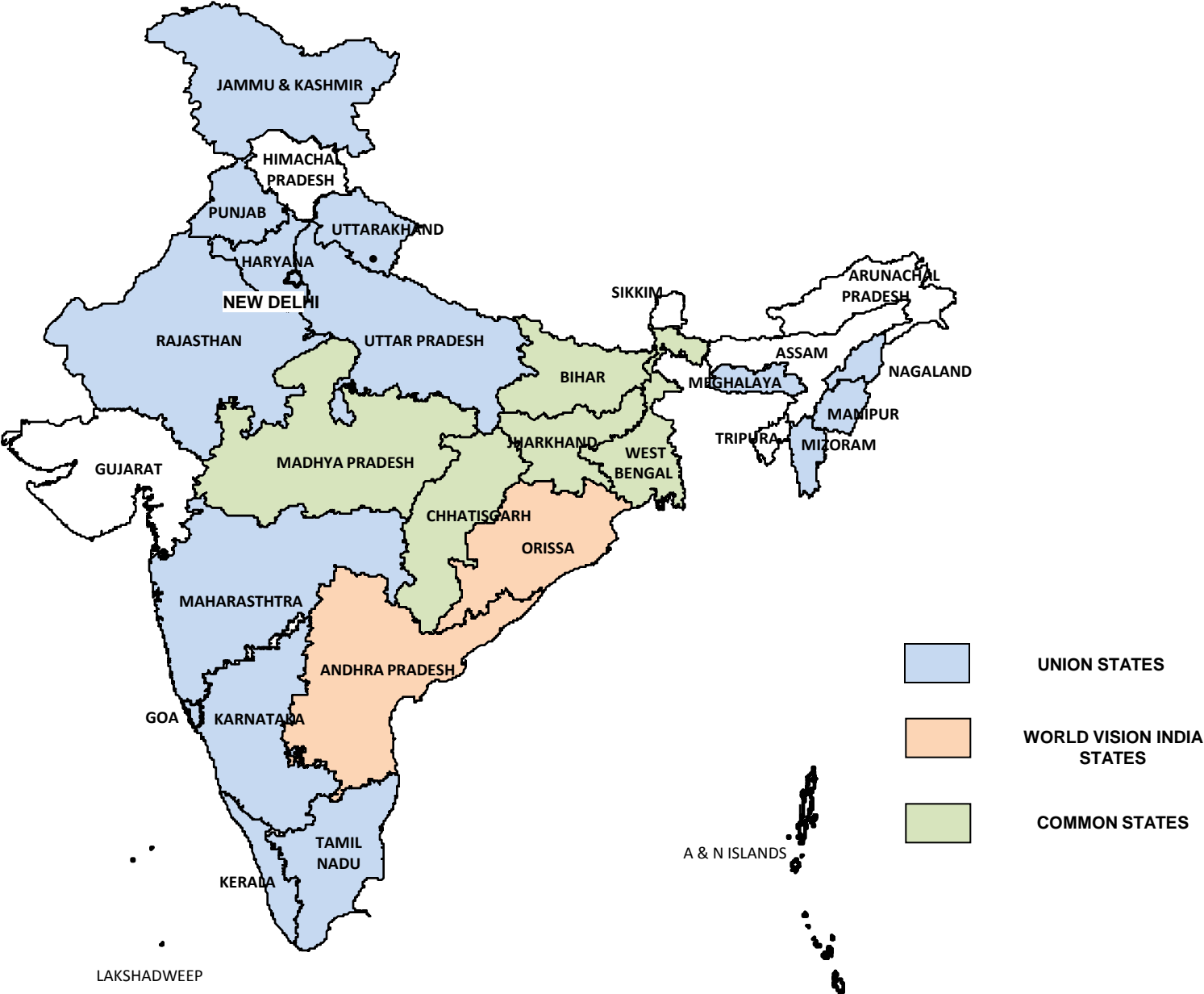


Annual Monitoring Plan

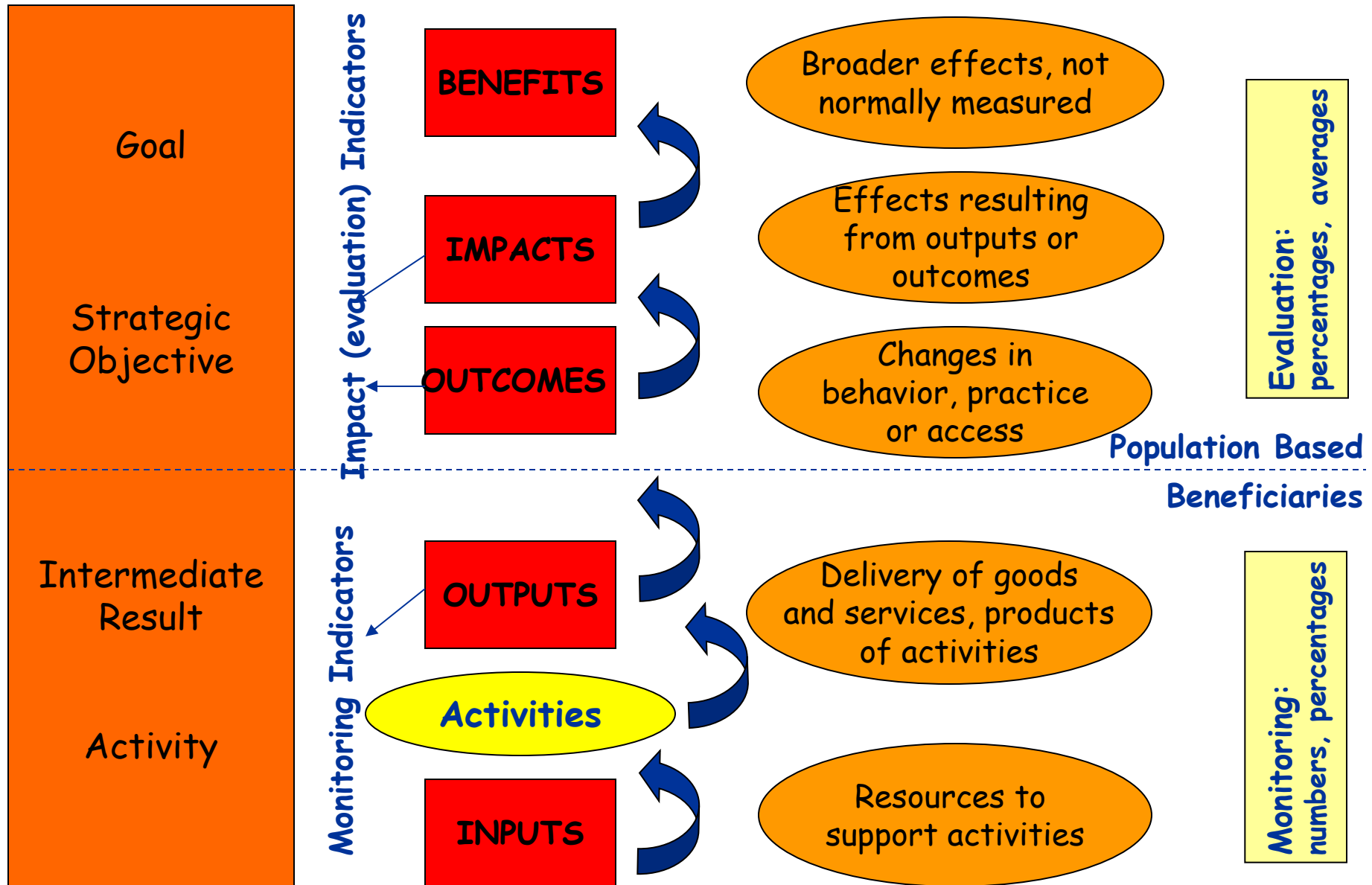
Lessons from National TB Program India

**Subodh Kumar
Global Monitoring and Evaluation Coordinator
Food for the Hungry
Washington DC**

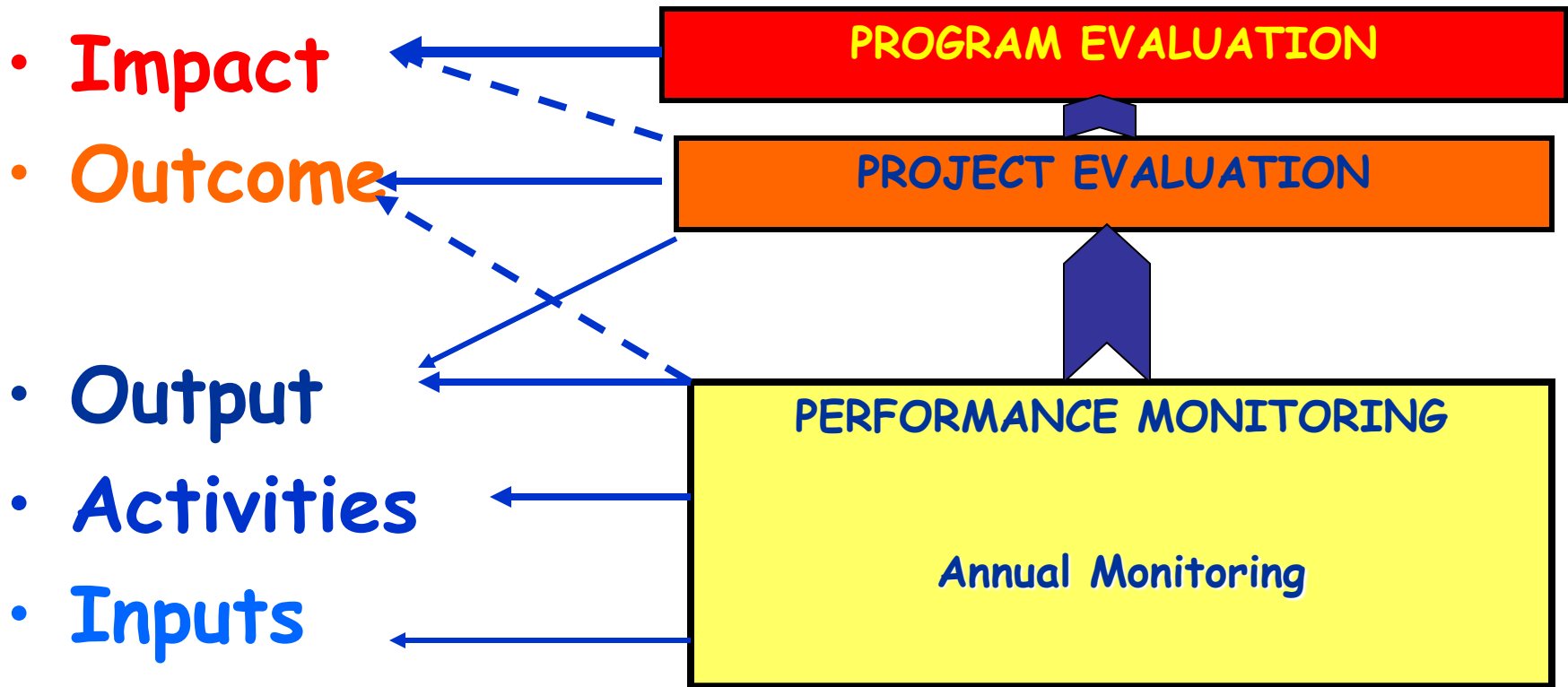
GEOGRAPHICAL COVERAGE - INDIA



Conceptual Framework that we used for Monitoring and Evaluation



We identified which evaluative process was most appropriate for measurement at various levels



Potential Challenges in Annual Monitoring

- **Shift** from 'routine' monitoring to 'outcome' based results oriented monitoring
- **Vital Few:** *Agreeing on potential mix and balance of indicators to be monitored annually specially outcomes*
- **Role** of partners and their **capacity**
- **Data Collection Tools:** *Timeliness, completeness, accuracy and quality of data*
- **Use** of Annual Monitoring Data

Determining Vital Few

Which indicators need to be evaluated periodically?

Which indicators need to be Annually monitored?

Not possible to monitor or evaluate everything so information needs have to be prioritized

Performance Framework (IPTT) the basis

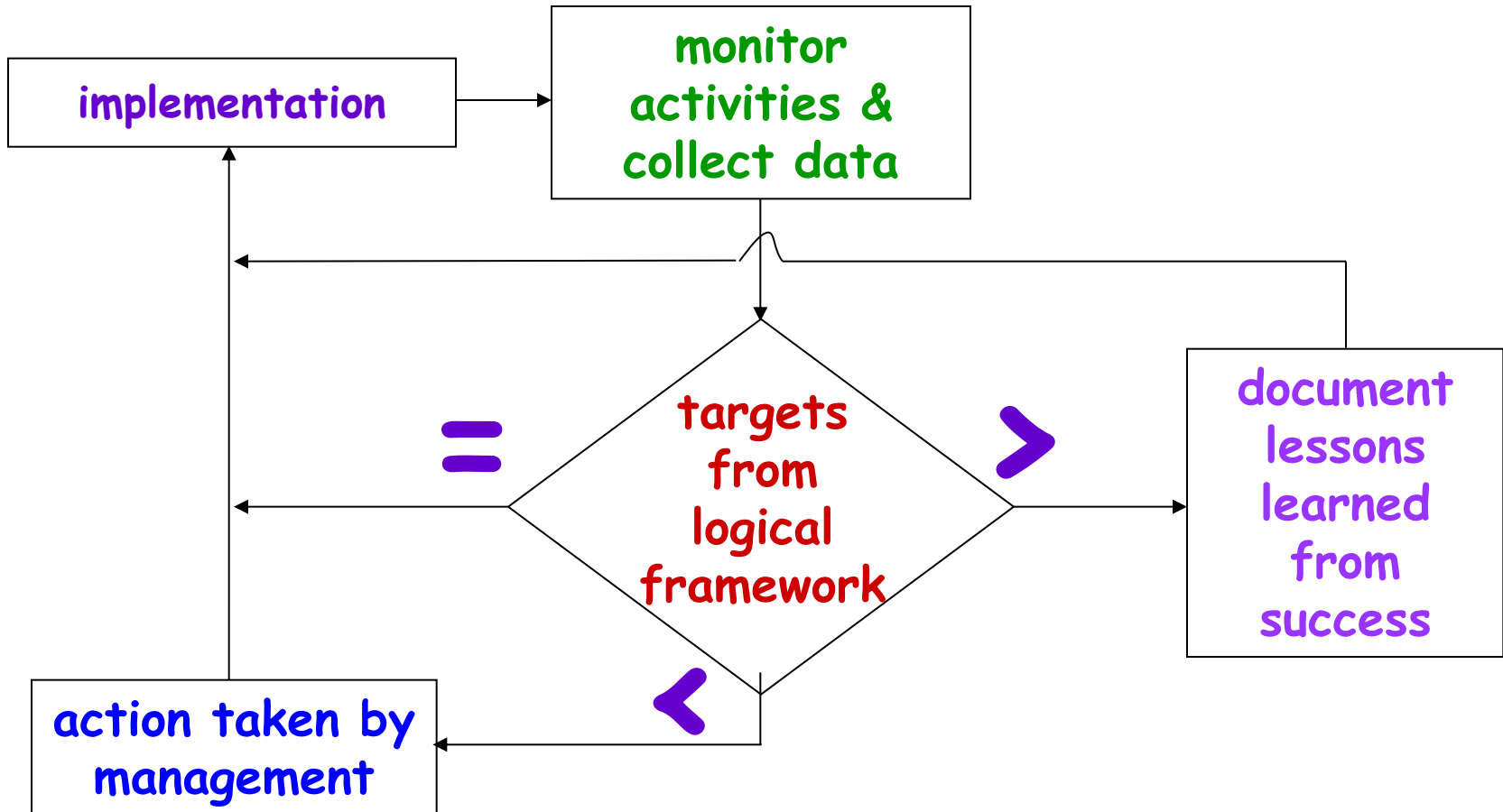


Steps for Annual Monitoring

1. Determined information needs
2. Assessed the potential value of monitoring information
3. Determined monitoring responsibilities
4. Planned data collection, including the design of monitoring forms
5. Wrote the detailed Monitoring Plan

Use of Annual Monitoring

Information...



Coverage

- Total districts covered: 374
- Number of States covered: 23
- Total population covered :Approx. 744m
- Number of implementing Partners : 20

Example: Monitoring Tools

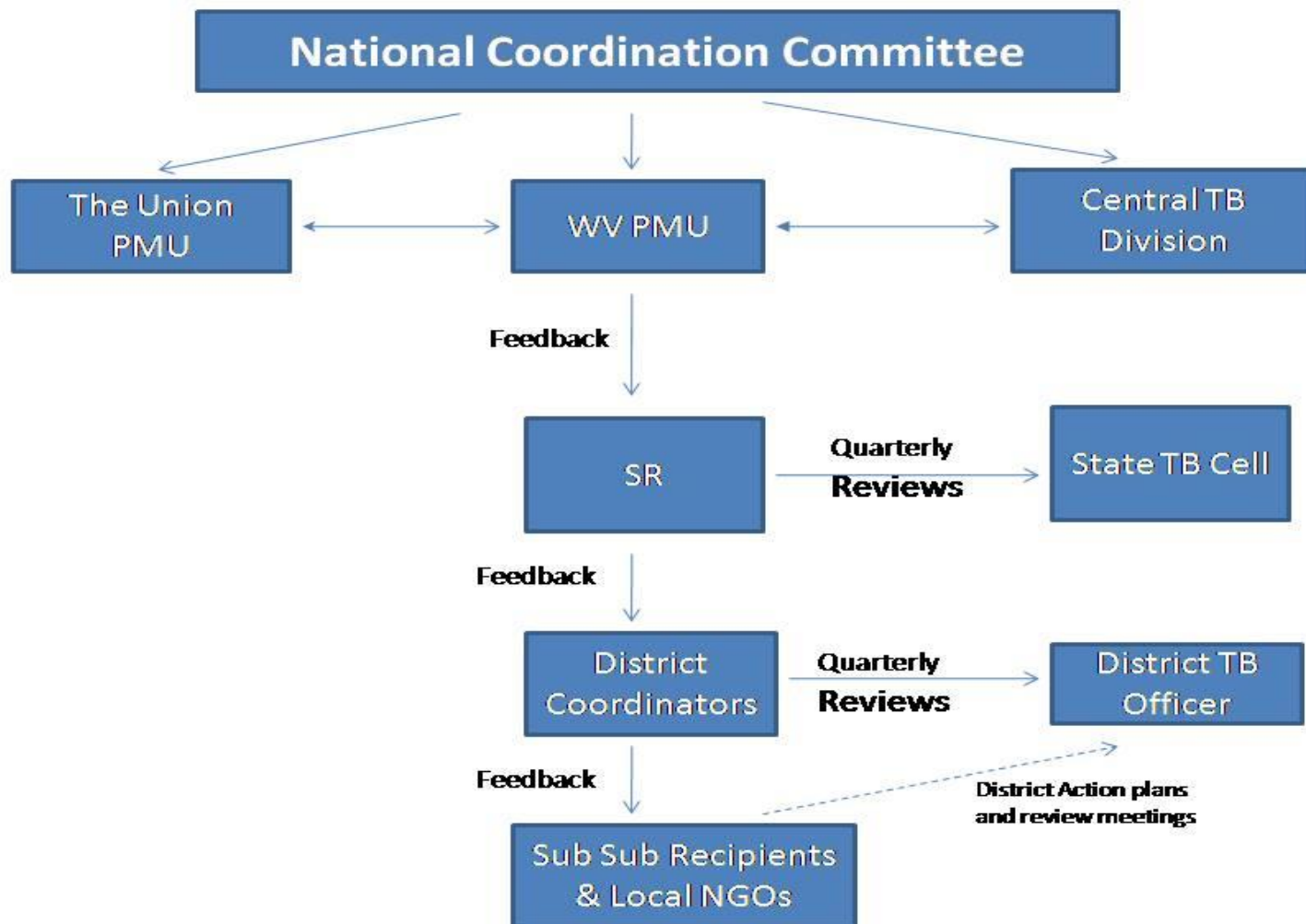
Sl. No	Indicator name	Reference tool
	Outcome Indicator	
1	Case Detection Rate: New Smear Positive Cases	TB register
2	Treatment success rate-New Smear Positive Cases	TB register
3	Average default rate of smear positive re-treatment patients in 374 districts	TB register
	Process indicators	
4	Number of districts with new smear positive case detection rate $\geq 70\%$ in 74 districts	Quarterly report on case finding
5	Percentage & number of target districts where at least 90% of all smear positive cases started RNTCP DOTS within 7 days of diagnosis	Quarterly report on Programme management
6	Percentage & number of target districts where at least 40% of registered TB patients (all forms) are supervised through community volunteers	Quarterly report on Programme management

M&E Flow

Program Information flow and feedback Mechanism



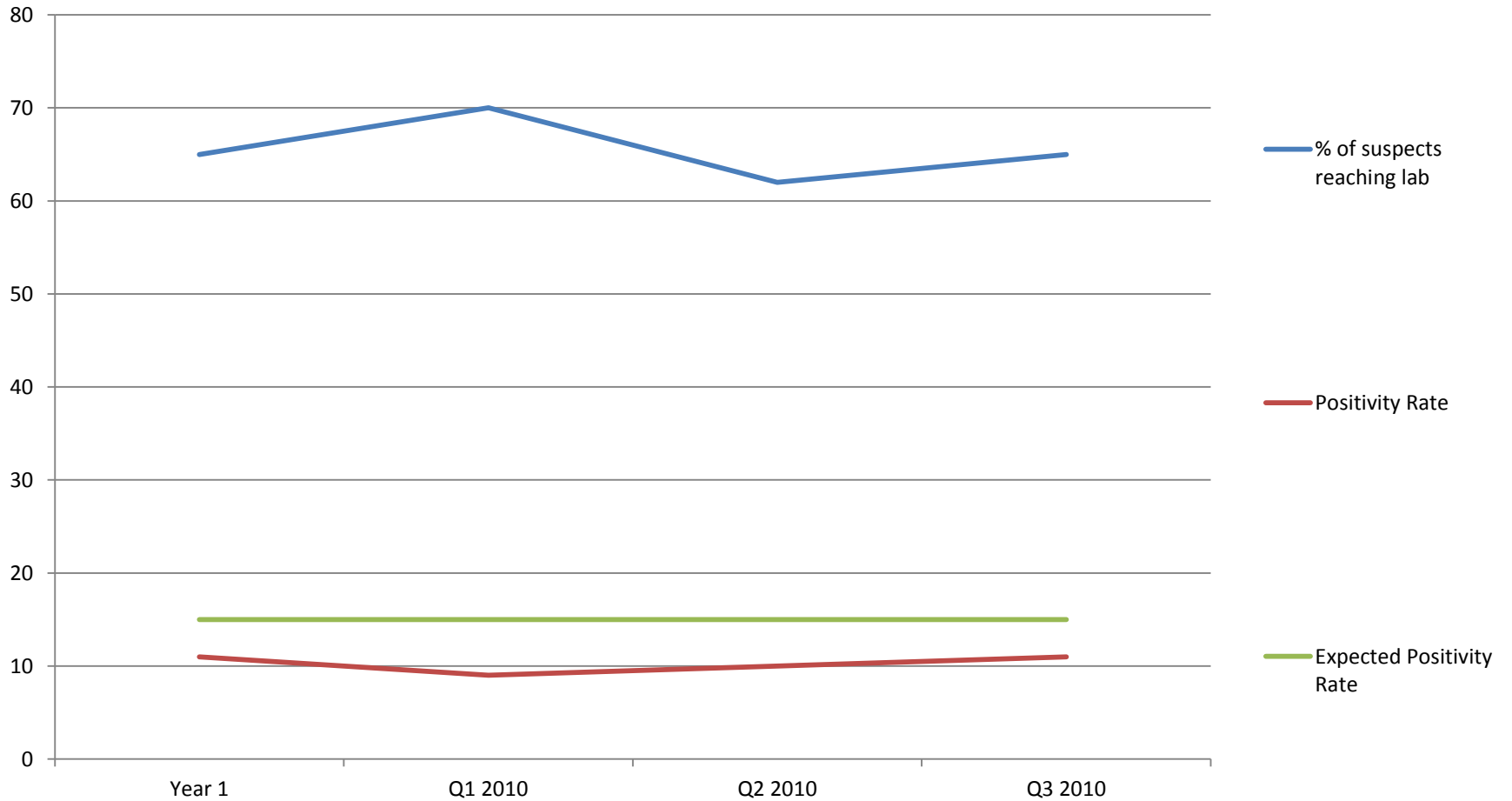
M&E Coordination



Annual Monitoring Results - Outcome

Period	# of suspects identified	# of suspects that reached lab	% of suspects reaching labs	# of suspects tested sputum positive	% of suspects tested sputum positive
Phase I Sept 11- Sept 12	38716	25016	65%	2857	11%
Qtr 1 Oct 12- Dec 13	22413	15698	70%	1381	9%
Qtr 2 Jan 13- Mar 13	15438	9571	62%	980	10%
Qtr-3 Apr 13- Jun 13	13692	8900	65%	979	11%
Total for year 1 and 2	90259	59185	66%	6197	11%

Annual Monitoring Results- Outcome



What have we learned about Annual Monitoring?

- Much of the learning that monitoring brings occurs immediately, in the field and with those closest to a project.
- But monitoring also supports learning in a broader context through evaluation.
- Though monitoring alone cannot attribute cause and effect, monitoring data is essential to thorough evaluation.
- Monitoring and evaluation work hand-in-hand and are carefully integrated in a good M&E system, although they have distinct characteristics.

Annual Monitoring versus Evaluation

- Can good annual monitoring lead to good evaluation?

ABSOLUTELY

**Monitoring is key to an
Evaluation**

Annual Monitoring - Conclusion

- Annual Monitoring should be done in a participatory process, involving community members in data analysis and results sharing as well as data gathering.
- Participatory data gathering, analysis and information sharing can create learning opportunities to identify and solve problems as they occur.
- Staff and participants can use monitoring to change activities and systems as necessary.
- Monitoring is inherently tied to evaluation, and a good monitoring system sets the stage for good evaluation.

GRACIAS
ARIGATO
SHUKURIA
DANKSCHEEN
TASHAKKUR ATU
BIYAN
SHUKRIA
THANK
YOU
SUKSAMA
RAZIE
EHRBANI
JUSPAXAR
GOZAPADITA
DICHABISTO
KOMPANGENYA
MAMKE
LOVES
TINAGI

