

Regional Learning Event for Latin America and the Caribbean

USAID's Climate Adaptation
Learning Activity (CALA)

May 8-9, 2024

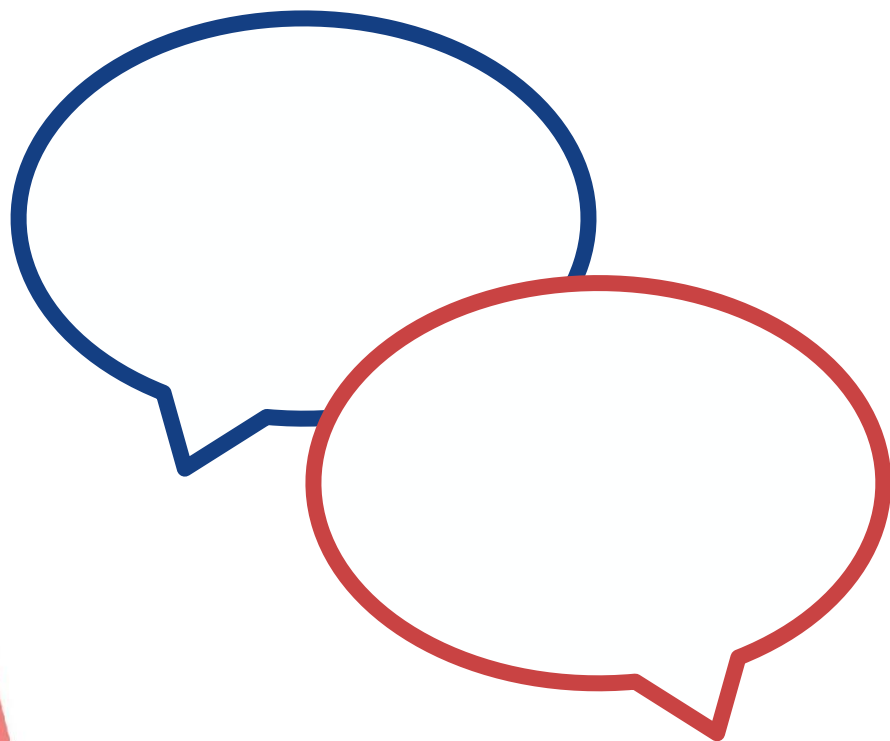


USAID
FROM THE AMERICAN PEOPLE



IDEAL

Interpretation | Interpretación



Everyone must select a language!

- Click “interpretation” at the bottom of your Zoom window; and
- Select the language that you would like to hear: English or Spanish

¡Seleccione su idioma de preferencia !

- Cliquee “interpretación” abajo de su pantalla Zoom; y
- Seleccione su idioma de preferencia: inglés o español.

In our meeting... | En nuestra reunion...

- Live transcript is available, please select “CC” for Closed Captions at the bottom of your Zoom window.
 - Feel free to activate your camera when you’re speaking, if you are able/comfortable to.
 - Please rename yourself to add your first and last name, and organization.
 - Please mute yourself when you are not speaking.
 - Please note that this event is recorded.
-
- La transcripción en directo está disponible, por favor seleccione «CC» para Closed Captions en la parte inferior de su pantalla Zoom.
 - Siéntase libre de activar su cámara cuando esté hablando, si puede y se siente cómodo/a.
 - Por favor, nómbrase con su nombre y apellidos, y organización.
 - Por favor, silénciese cuando no esté hablando.
 - Tenga en cuenta que esta sesión está grabada.



CALA Quick Facts



Funder:

USAID's Bureau for Humanitarian Assistance (BHA)

Duration:

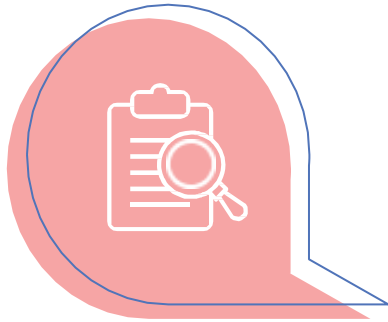
2 Years

(January 23, 2023 – January 22, 2025)

Consortium:

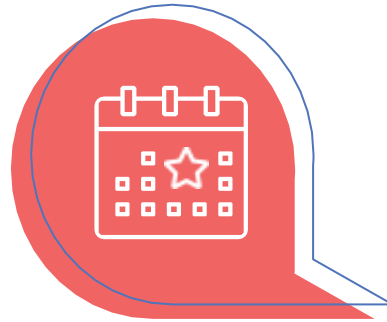
Save the Children and the Institute for Development Impact (I4DI)

Objectives



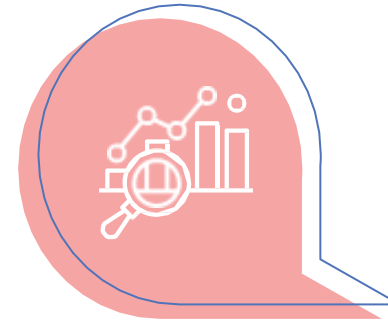
DESK REVIEW

Create a shared understanding, across implementing partners (IP) and BHA on common climate adaptation approaches in BHA programs.



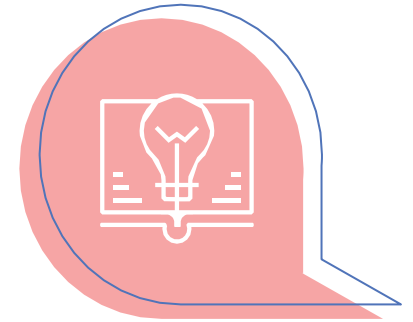
LEARNING EVENTS

Foster knowledge sharing and capture lessons learned around the implementation of past climate adaptation efforts to strengthen and promote adaptation of ongoing and future BHA climate adaptation programming



META EVALUATION

Synthesize findings from available evaluations of BHA and non-BHA funded activities and share practical evidence of effective ways to tackle climate risks in the full range of humanitarian programming



LEARNING AGENDA

Identify and prioritize key evidence gaps and align research and learning efforts across the IP community

Agenda Day 1

12:00-13:00

- Welcome & Opening Remarks
- USAID/BHA Approach to Climate Change Programming in LAC
- Overview of CALA's Research

- Bienvenida e inauguración
- USAID/BHA enfoque de programación para el cambio climático en ALC
- Enfoque de investigación de CALA

13:00-13:15

15 MINUTES BREAK

PAUSA DE 15 MINUTOS

13:15-14:30

THEME SESSIONS

(Participants must select ONE)

- Climate Information Services
- Climate-resilient Agriculture

SESIONES TEMÁTICAS

(Participantes eligen UNA)

- Servicios de Información Climática
- Agricultura Climáticamente Resiliente

14:00-14:45

15 MINUTES BREAK

PAUSA DE 15 MINUTOS

14:45-16:00

- Learnings from Theme Sessions
- Knowledge & Evidence Gaps
- Closing of Day 1

- Enseñanzas de los debates temáticos
- Brechas de conocimiento y evidencia
- Clausura de la jornada 1



USAID
FROM THE AMERICAN PEOPLE

Opening Remarks

Shawnee Hoover

BHA Senior Climate and Learning Advisor, Washington, DC



USAID/BHA LAC'S APPROACH TO CLIMATE CHANGE

Erin Magee, USAID/BHA LAC Deputy Regional
Director

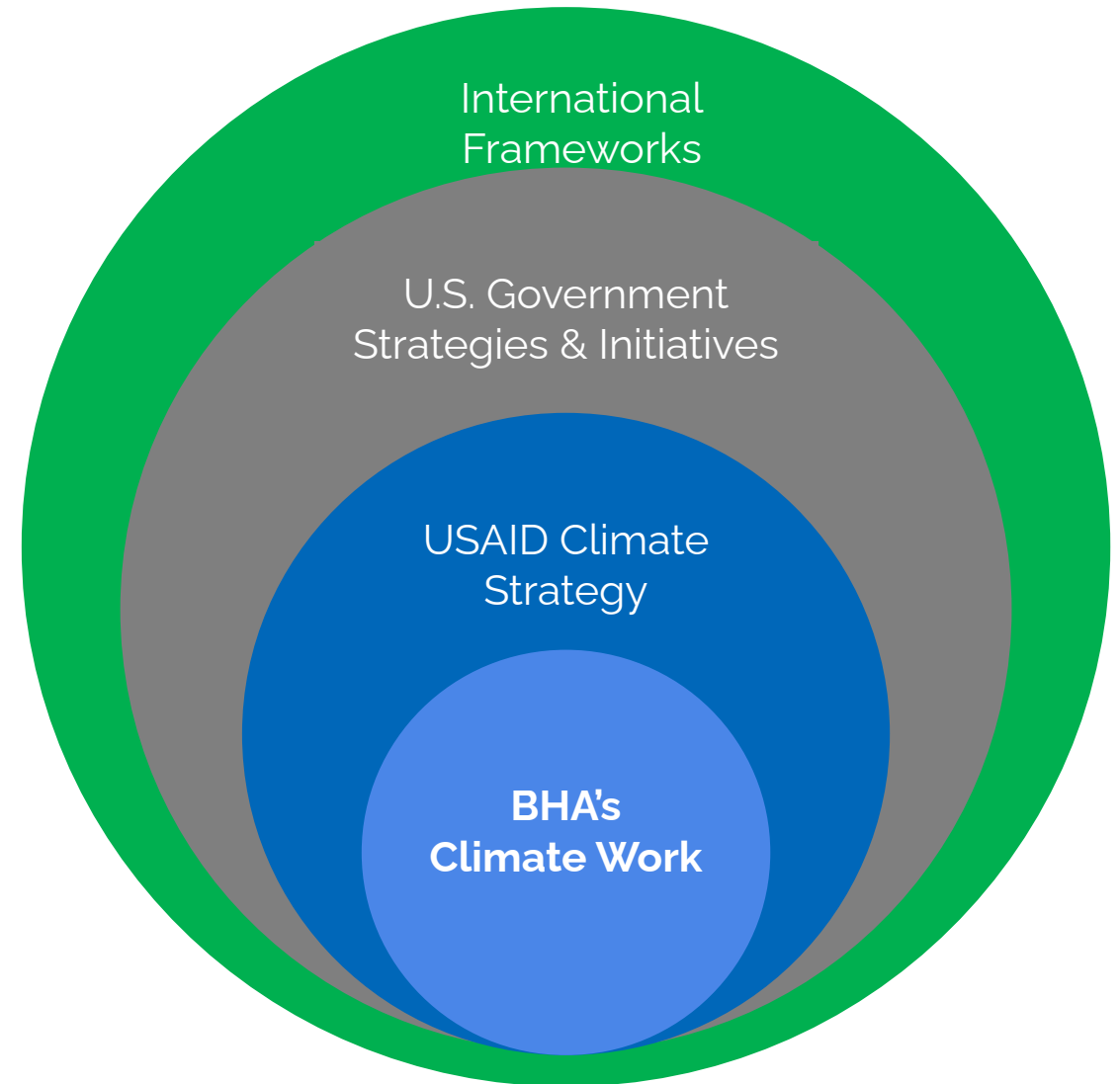


USAID
FROM THE AMERICAN PEOPLE

Strategic Alignment

Catalyze humanitarian assistance through locally-led and equitable climate action

USAID's Climate Strategy commits all of its bureaus to pursue equitable and ambitious climate action not only in what we do, but how we do it.



BHA Climate Priority Areas

1. Frontline Communities Sustainably Manage Climate Risks
2. Strengthen Coherence Across Climate and HDP Nexus
3. Expand and Improve Climate Early Warning and Early Action
4. Accelerate Climate Resilient Humanitarian Assistance



Cross-cutting approaches

BHA LAC Approaches to Climate Change Responses

Integrate shock responsive mechanisms into response programs

Build climate smart approaches into our response actions



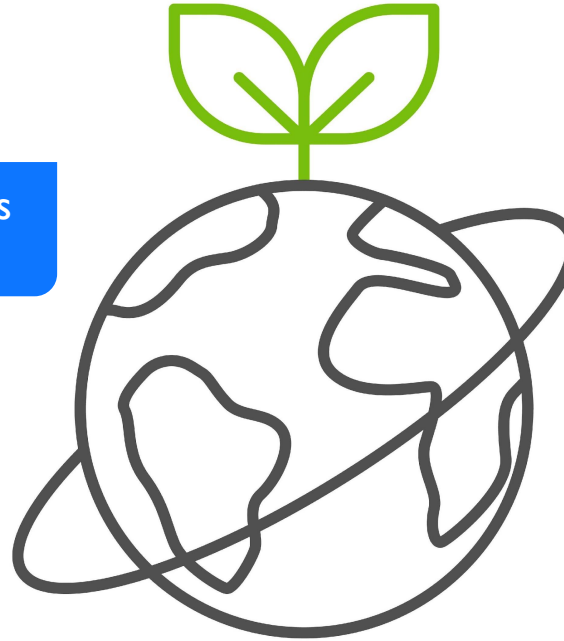
Strengthen coordination between humanitarian development, and peacebuilding assistance

Adopt climate resilient designs in shelter and settlements activities

BHA LAC Approach to Climate Change

Disaster Risk Reduction

Develop innovative climate adaptation solutions in communities at high risk



Support host governments to create inclusive plans, strategies and policies to reduce climate risk

Strengthen early warning systems in communities with vulnerable conditions

Build capacity to reduce impact, prepare for, and respond to new and emerging climate hazards

Enhance anticipatory actions to reduce recurrent impacts of climate risks

Getting to know each other! | ¡Conocerse mejor!



In your group:

- Introduce yourself (name, role, and country of implementation)
- Find up to FIVE things you all have in common!

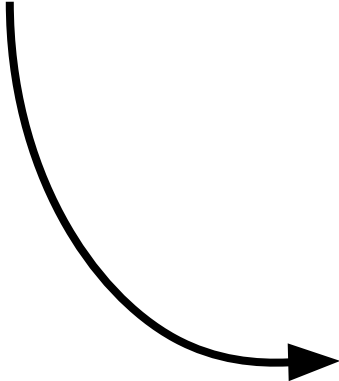
En su grupo :

- Preséntese (nombre, función, y país de implementación)
- ¡Encuentre hasta CINCO cosas que el grupo tiene en común !

Overview of CALA's Research on Common Approaches to Climate Adaptation



Scan this QR code to join Aha Slides





Break: back at a quarter past (:15)

—

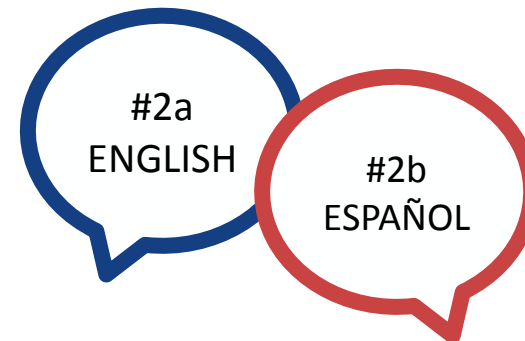
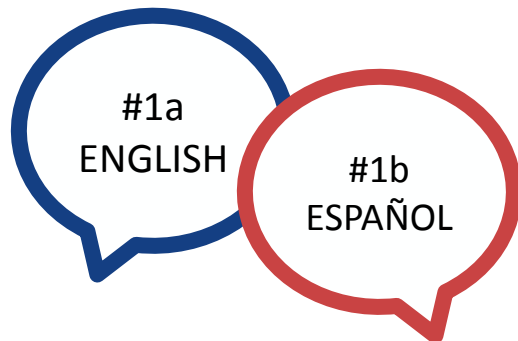
Pausa: volvemos al cuarto de hora (:15)

Theme Sessions | Sesiones temáticas

TODAY | HOY

Select one of the following themes: | Elige uno de los dos temas siguientes:

#1a	Climate Information Services for Community-led Early Warning, Response, and Adaptation	#2a	Climate-resilient Agriculture: Capacity Strengthening for Climate Change Adaptation
#1b	Servicios de información climática para la alerta temprana, la respuesta y la adaptación dirigidas por la comunidad	#2b	Agricultura resiliente al clima: refuerzo de la capacidad para la adaptación al cambio climático

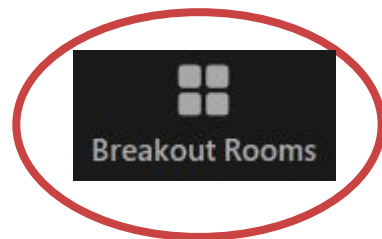


Select your group | Elija su grupo

Group #1a: Climate Information Services for Community-led Early Warning, Response, and Adaptation

Group #1b: Servicios de información climática para la alerta temprana, la respuesta y la adaptación dirigidas por la comunidad

1. Please click "Breakout Rooms" in your meeting controls.
2. Please select the room you'd like to join, and click "Join".



Group #2a: Climate-resilient Agriculture: Capacity Strengthening for Climate Change Adaptation

Group #2b: Agricultura resiliente al clima: refuerzo de la capacidad para la adaptación al cambio climático

1. Haga clic en "Salas de reuniones" en los controles Zoom.
2. Seleccione la sala a la que desea unirse y haga clic en "Unirse".

#1a Climate Information Services	0	Join
#1b Servicios de información climática	0	Join
#2a Climate-resilient Agriculture	0	Join
#2b Agricultura resiliente al clima	0	Join



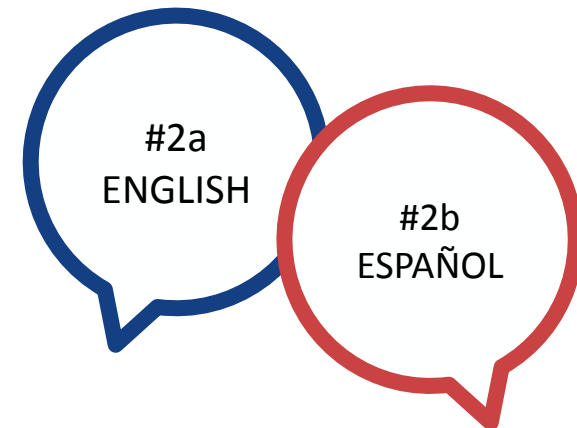
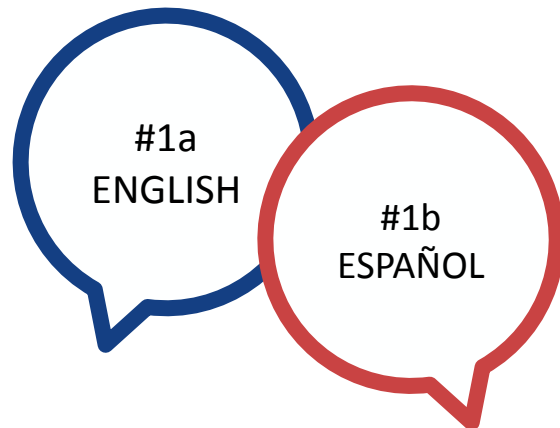
Break: back at a quarter to (:45)

—

Pausa: volvemos a menos cuarto (:45)

Learnings from Theme Discussions

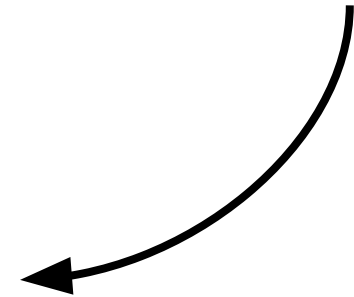
#1a	Climate Information Services for Community-led Early Warning, Response, and Adaptation	#2a	Climate-resilient Agriculture: Capacity Strengthening for Climate Change Adaptation
#1b	Servicios de información climática para la alerta temprana, la respuesta y la adaptación dirigidas por la comunidad	#2b	Agricultura resiliente al clima: refuerzo de la capacidad para la adaptación al cambio climático



Knowledge & Evidence Gaps

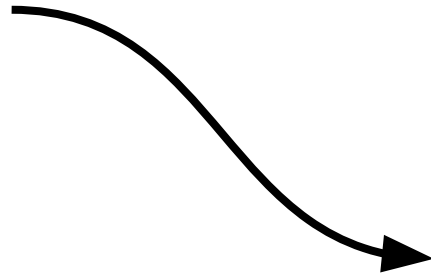


**Join us on
Aha Slides!**



Let us know how we did today!

**Scan this QR
code to join
Aha Slides**



Agenda Day 2

12:00-12:15	<ul style="list-style-type: none">• Welcome & Opening Remarks	<ul style="list-style-type: none">• Bienvenida e apertura
12:15-13:15	THEME SESSIONS (Participants must select ONE) <ul style="list-style-type: none">• Urban Climate Adaptation & Risk Reduction Programming• Natural Resources Management	SESIONES TEMÁTICAS (Participantes eligen UNA) <ul style="list-style-type: none">• Programación de la adaptación climática urbana y la reducción del riesgo• Gestión de recursos naturales
13:15-13:30	15 MINUTES BREAK	PAUSA DE 15 MINUTOS
13:30-14:30	CROSS-CUTTING SESSIONS (Participants must select ONE) <ul style="list-style-type: none">• Equity, Inclusion, and Gender in Climate Adaptations• Community-Led Climate Adaptations	SESIONES TRANSVERSALES (Participantes eligen UNA) <ul style="list-style-type: none">• Equidad, inclusión y género en la adaptación al cambio climático• Adaptaciones climáticas lideradas por la comunidad
14:30-14:45	15 MINUTES BREAK	PAUSA DE 15 MINUTOS
14:45-16:00	<ul style="list-style-type: none">• Knowledge & Evidence Gaps• Closing of Day 2	<ul style="list-style-type: none">• Brechas de conocimiento y evidencia• Clausura de la jornada 1



¡Gracias!

Thank you!

Contact us at CALA@savechildren.org



This presentation is made possible by the generous support of the American people through the United States Agency for International Development (USAID). The contents are the responsibility of the Climate Adaptation Learning Activity (CALA) and do not necessarily reflect the views of USAID or the United States Government.