

# CALA | Climate Adaptation Learning Activity

*Launch Event  
October 25, 2023*



**USAID**  
FROM THE AMERICAN PEOPLE



**IDEAL**

# Agenda

- USAID Opening Remarks
- Overview of CALA
- Status Update: Climate Adaptation Programming Desk Review
- Discussion on Research and Learning Priorities

Climate-related disasters impact us  
all with increasing intensity



# CALA Quick Facts



## **Funder:**

USAID's Bureau for Humanitarian Assistance (BHA)

## **Duration:**

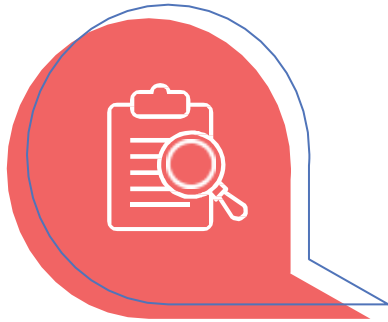
2 Years

(January 23, 2023 – January 22, 2025)

## **Consortium:**

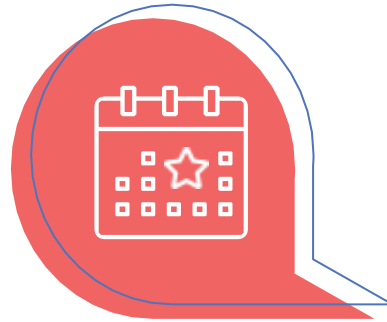
Save the Children and the Institute for Development Impact (I4DI)

# Objectives



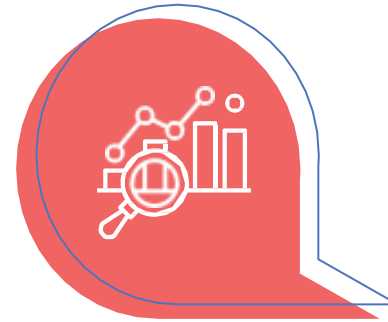
## DESK REVIEW

Create a shared understanding, across implementing partners (IP) and BHA on common climate adaptation approaches in BHA programs.



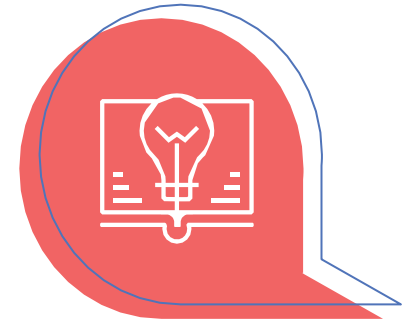
## LEARNING EVENTS

Foster knowledge sharing and capture lessons learned around the implementation of past climate adaptation efforts to strengthen and promote adaptation of ongoing and future BHA climate adaptation programming



## META EVALUATION

Synthesize findings from available evaluations of BHA and non-BHA funded activities and share practical evidence of effective ways to tackle climate risks in the full range of humanitarian programming



## LEARNING AGENDA

Identify and prioritize key evidence gaps and align research and learning efforts across the IP community

# Current Status

## Completed

- Developed an analytical framework
- Inventoried over 4,000 BHA climate adaptation program documents
- Developed a climate adaptation glossary
- Conducted a metadata analysis of these BHA documents to characterize the data at a high level

## In process

- Training AI model using analytical framework, in preparation for the desk review
- Extracting key learnings from non-BHA climate adaptation reviews
- Establishing a CALA steering committee to review and validate learnings over the life of the award

## Upcoming

- Early 2024, Date TBD: First CALA Regional Learning Event (virtual)



DESK  
REVIEW



LEARNING  
EVENTS



META  
EVALUATION



LEARNING  
AGENDA

# CALA Framework Structure

## Programmatic Themes (Macro-Themes & Sub-Themes)

### Cross-Cutting Themes



### Sectoral Approaches to Strengthening Climate Resilience

### Risk Preparedness and Planning

### System-Level / Transformative Adaptations

Justice, Equity, Localization, & Gender

Sequencing, Layering & Integration

Humanitarian, Development, Peacebuilding Coherence

Climate Risk Protection & Displacement

Urban Climate Risk Reduction


Exploration of the Intersection between Programmatic and Cross-Cutting themes

- Typologies (timing, geo, intent, etc.)
- Knowledge gaps
- Implementation challenges
- Opportunities

← Typologies and other analyses (TBD)



# Programmatic Themes Deep Dive

## Illustrative Intervention Types

<p><b>Macro-Theme 1</b> Sectoral Approaches to Strengthening Climate Resilience</p>	<p><b>Sub-Themes</b></p> <ul style="list-style-type: none"> <li>A. Climate-smart agricultural livelihoods</li> <li>B. Off-farm, non-farm livelihoods</li> <li>C. Integrated watershed resources management</li> </ul>	<ul style="list-style-type: none"> <li>● Promotion of climate-resilient seed varieties</li> <li>● Improved access to quality farm inputs</li> <li>● Land rehabilitation</li> <li>● Water conservation</li> <li>● Irrigation development</li> <li>● Flood mitigation</li> <li>● Integrated pest management</li> <li>● Climate-appropriate forestry / agroforestry</li> <li>● Soft skills ("life skills") and vocational training</li> </ul>
<p><b>Macro-Theme 2</b> Risk Preparedness and Planning</p>	<p><b>Sub-Themes</b></p> <ul style="list-style-type: none"> <li>A. Components of anticipatory action</li> <li>B. Capacity strengthening</li> <li>C. Community-led adaptation</li> <li>D. Disaster Risk Reduction (DRR)</li> </ul>	<ul style="list-style-type: none"> <li>● Promotion of accessible local weather forecasts</li> <li>● Promotion of community engagement in early warning systems</li> <li>● Promotion of local weather forecasts, climate information</li> <li>● Improved access to Early Warning Systems</li> <li>● Climate change adaptation education</li> <li>● Improved access to extension services</li> <li>● Community-based DRR/DRM education and training</li> <li>● Community-led hazard, vulnerability, capacity assessment and mapping</li> <li>● DRR/DRM preparedness, contingency and action planning</li> </ul>
<p><b>Macro-Theme 3</b> System-Level / Transformative Adaptations</p>	<p><b>Sub-Themes</b></p> <ul style="list-style-type: none"> <li>A. Climate-responsive market &amp; financial system strengthening</li> <li>B. Climate-responsive social protection systems</li> <li>C. Climate adaptation governance</li> <li>D. Climate resilience of key infrastructure sectors</li> </ul>	<ul style="list-style-type: none"> <li>● Improved coordination of local climate adaptation planning</li> <li>● Development of climate-smart value chains</li> <li>● Private-sector engagement in DRR/CCA actions</li> <li>● Promotion of climate risk insurance (crop, livestock insurance)</li> <li>● Promotion of Village-Savings and Loans Associations (VSLA)</li> <li>● Construction, rehabilitation of small-scale DRR infrastructure</li> <li>● Access to climate-sensitive safety nets (e.g. climate disaster response assistance)</li> <li>● Cash for Work for DRR infrastructure and/or training</li> </ul>





**Questions?**

# Programmatic Themes Deep Dive

## Illustrative Intervention Types

<p><b>Macro-Theme 1</b> Sectoral Approaches to Strengthening Climate Resilience</p>	<p><b>Sub-Themes</b></p> <ul style="list-style-type: none"> <li>A. Climate-smart agricultural livelihoods</li> <li>B. Off-farm, non-farm livelihoods</li> <li>C. Integrated watershed resources management</li> </ul>	<ul style="list-style-type: none"> <li>● Promotion of climate-resilient seed varieties</li> <li>● Improved access to quality farm inputs</li> <li>● Land rehabilitation</li> <li>● Water conservation</li> <li>● Irrigation development</li> <li>● Flood mitigation</li> <li>● Integrated pest management</li> <li>● Climate-appropriate forestry / agroforestry</li> <li>● Soft skills ("life skills") and vocational training</li> </ul>
<p><b>Macro-Theme 2</b> Risk Preparedness and Planning</p>	<p><b>Sub-Themes</b></p> <ul style="list-style-type: none"> <li>A. Components of anticipatory action</li> <li>B. Capacity strengthening</li> <li>C. Community-led adaptation</li> <li>D. Disaster Risk Reduction (DRR)</li> </ul>	<ul style="list-style-type: none"> <li>● Promotion of accessible local weather forecasts</li> <li>● Promotion of community engagement in early warning systems</li> <li>● Promotion of local weather forecasts, climate information</li> <li>● Improved access to Early Warning Systems</li> <li>● Climate change adaptation education</li> <li>● Improved access to extension services</li> <li>● Community-based DRR/DRM education and training</li> <li>● Community-led hazard, vulnerability, capacity assessment and mapping</li> <li>● DRR/DRM preparedness, contingency and action planning</li> </ul>
<p><b>Macro-Theme 3</b> System-Level / Transformative Adaptations</p>	<p><b>Sub-Themes</b></p> <ul style="list-style-type: none"> <li>A. Climate-responsive market &amp; financial system strengthening</li> <li>B. Climate-responsive social protection systems</li> <li>C. Climate adaptation governance</li> <li>D. Climate resilience of key infrastructure sectors</li> </ul>	<ul style="list-style-type: none"> <li>● Improved coordination of local climate adaptation planning</li> <li>● Development of climate-smart value chains</li> <li>● Private-sector engagement in DRR/CCA actions</li> <li>● Promotion of climate risk insurance (crop, livestock insurance)</li> <li>● Promotion of Village-Savings and Loans Associations (VSLA)</li> <li>● Construction, rehabilitation of small-scale DRR infrastructure</li> <li>● Access to climate-sensitive safety nets (e.g. climate disaster response assistance)</li> <li>● Cash for Work for DRR infrastructure and/or training</li> </ul>

# For any of CALA's proposed sub-themes, what are some of the priority research and learning gaps?

## Macro-Theme 1 Sectoral Approaches to Strengthening Climate Resilience

**Sub-Theme A**  
Climate-smart agricultural  
livelihoods

**Sub-Theme B**  
Off-farm, non-farm  
livelihoods

**Sub-Theme C**  
Integrated watershed  
resources management

## Macro-Theme 2 Risk Preparedness and Planning

**Sub-Theme A**  
Components of anticipatory  
action

**Sub-Theme B**  
Capacity strengthening

**Sub-Theme C**  
Community-led adaptation

**Sub-Theme D**  
Disaster Risk Reduction (DRR)

## Macro-Theme 3 System-Level / Transformative Adaptations

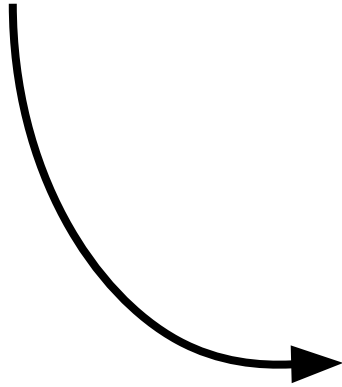
**Sub-Theme A**  
Climate-responsive market &  
financial system  
strengthening

**Sub-Theme B**  
Climate-responsive social  
protection systems

**Sub-Theme C**  
Climate adaptation  
governance

**Sub-Theme D**  
Climate resilience of key  
infrastructure sectors

Scan this QR code to join Aha Slides



# For any of CALA's proposed sub-themes, what are some of the priority research and learning gaps?

**Macro-Theme 1**  
Sectoral Approaches to Strengthening Climate Resilience

**Sub-Theme A**  
Climate-smart agricultural livelihoods

**Sub-Theme B**  
Off-farm, non-farm livelihoods

**Sub-Theme C**  
Integrated watershed resources management

# For any of CALA's proposed sub-themes, what are some of the priority research and learning gaps?

**Macro-Theme 2**  
Risk Preparedness and Planning

**Sub-Theme A**  
Components of anticipatory  
action

**Sub-Theme B**  
Capacity strengthening

**Sub-Theme C**  
Community-led adaptation

**Sub-Theme D**  
Disaster Risk Reduction (DRR)

# For any of CALA's proposed sub-themes, what are some of the priority research and learning gaps?

## **Macro-Theme 3** System-Level / Transformative Adaptations

### **Sub-Theme A**

Climate-responsive market & financial system strengthening

### **Sub-Theme B**

Climate-responsive social protection systems

### **Sub-Theme C**

Climate adaptation governance

### **Sub-Theme D**

Climate resilience of key infrastructure sectors





Photo Credit: Mark Njoroge / Save the Children

# Thank you!

Contact us at [CALA@savechildren.org](mailto:CALA@savechildren.org)



This presentation is made possible by the generous support of the American people through the United States Agency for International Development (USAID). The contents are the responsibility of the Climate Adaptation Learning Activity (CALA) and do not necessarily reflect the views of USAID or the United States Government.