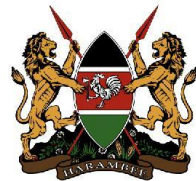




GREATER HORN OF AFRICA REGIONAL KNOWLEDGE SHARING MEETING



**HUMANITARIAN-DEVELOPMENT-PEACE (HDP)
COHERENCE IN FOOD CRISIS CONTEXTS**



USAID
FROM THE AMERICAN PEOPLE




PEACE, PROSPERITY AND
REGIONAL INTEGRATION



Pastoralist Livelihoods in the Face of Climate Change

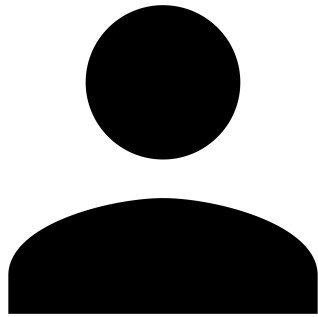
Tuesday, May 9, 2023

14:30-16:00

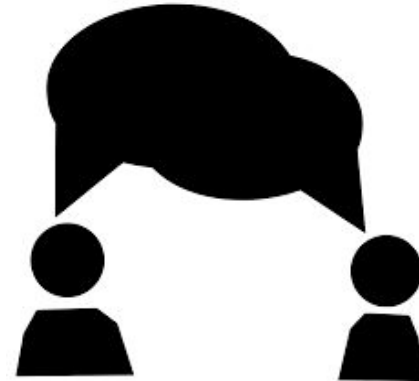


Reflect and Respond

Are traditional pastoralist livelihoods still viable?



Take 5 minutes
to reflect on
your own.



Find another
person and take
5 minutes to
share your
thoughts.

Lightning Talk:

**Supporting Pastoralism and Agriculture in
Recurrent and Protracted Crises (SPARC)**

**Nelson Owange, Director of Programs
Mercy Corps, South Sudan**



About SPARC

- ❖ Generates evidence to build resilience in (agro-)pastoral communities across the drylands
- ❖ FCDO-funded, through 2026
- ❖ Consortium partners: Mercy Corps, the Overseas Development Institute (ODI), the International Livestock Research Institute (ILRI)
- ❖ In South Sudan: Longitudinal qualitative research exploring adaptation in pastoral livelihood systems

Nelson Owange
Director of Programs, South Sudan
Mercy Corps



January 2023

TECHNICAL REPORT

DYNAMISM IN THE DRYLANDS

Evidence from South Sudan for supporting pastoral livelihoods during protracted crises

Alex Humphrey, with Thudan James Gai and Nyachar Lony



Lessons from South Sudan

- ❖ **Pastoralism remains a dynamic livelihood system.** A 'snapshot in time' can't tell us much.
- ❖ **Climate change and conflict are driving changes to the system** in ways that vary between and within regions, communities, and households.
- ❖ **Pastoralists are rational actors.** Programming should equip them to *make and act on informed choices*, rather than incentivising specific outcomes.



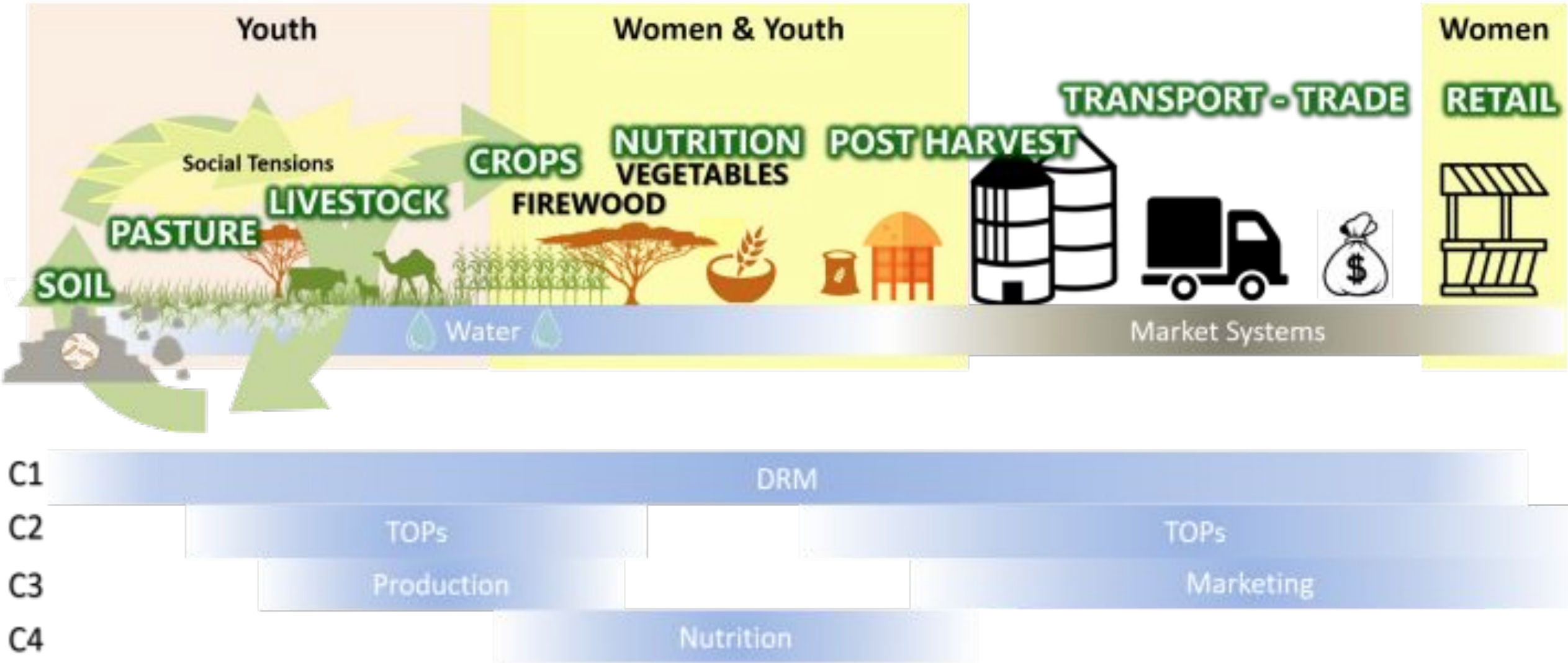
Peer to Peer Interview

Resilience in
Pastoral Areas - North
Will Baron, Chief of Party

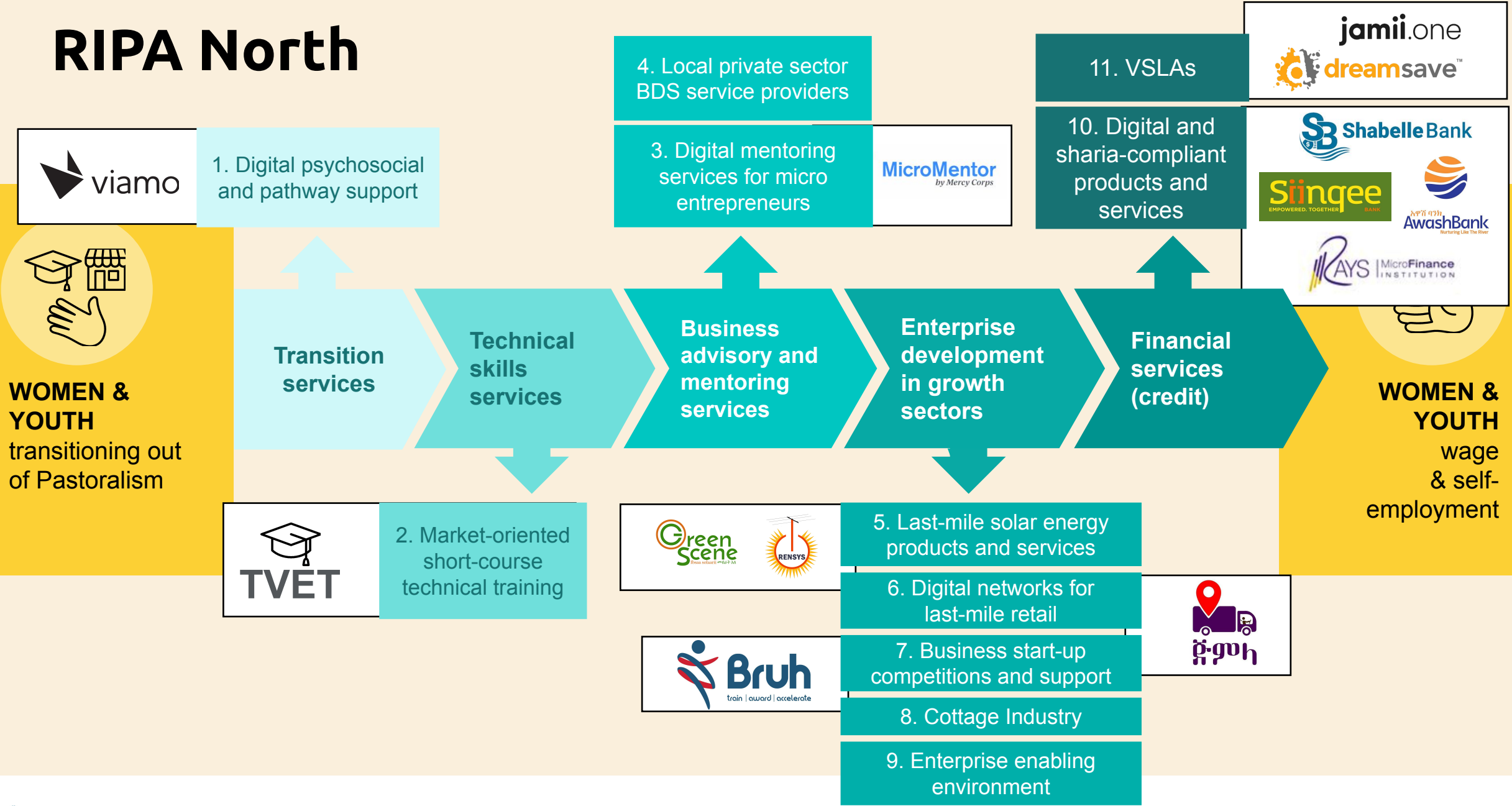
Resilience in
Pastoral Areas - South
Ameha Tadesse, Chief of Party



RIPA South: Components in the Value Chains



RIPA North






Breakout Groups

Question 1

What are the differences in opportunities for men, women, and youth for pastoralist vs. alternative livelihoods?

Question 2

How do we balance community-led vs. market-based priorities in pastoralist programs?





Key Takeaways from Discussion Groups

- Pastoralism is dynamic, not a monolith.
 - Need to strike the right balance between reacting or adapting to current conditions and planning for future hopes and aspirations.
 - Informed decision-making, specifically on climate change, requires accurate information not in abstract terms.
 - Livestock is not just for selling; animals serve households and communities at multiple levels.
 - Create a conducive environment for pastoralists to make choices as rational actors, regardless of the variety of contexts in the region.
 - Pastoralism may be becoming less viable, but what else would work in these lands?
- 