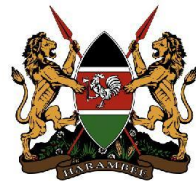




# **GREATER HORN OF AFRICA REGIONAL KNOWLEDGE SHARING MEETING**



**HUMANITARIAN-DEVELOPMENT-PEACE (HDP)  
COHERENCE IN FOOD CRISIS CONTEXTS**



**USAID**  
FROM THE AMERICAN PEOPLE



PEACE, PROSPERITY AND  
REGIONAL INTEGRATION



# Adapting Early Warning Systems to Support Early/Anticipatory Action

May 11, 2023







## Scenario A

*One day, it begins raining, a welcome change from the ongoing drought.*

*During the night, your neighbor wakes you up telling you their fields have flooded.  
What do you do?*

## Scenario B

*Due to the work of a nonprofit in the region, an Early Warning System has been established to measure rainfall in the Ethiopian highlands to inform the situation in Hiiraan ...*

*You receive an SMS alert that riverine flooding is expected a week from now.  
What do you do?*






**BRiCS Knowledge Sharing:**

**Enabling Action Ahead and  
During Shocks**



# Where are we Coming From?



 2011 famine - more than 260,000 excess deaths, more than 50% under 5.

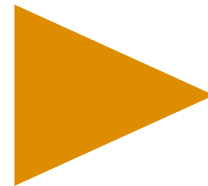
**Community led resilience - 2013**

Shock ridden context

**2<sup>nd</sup> most vulnerable to climate change**

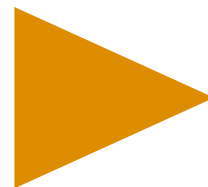
# Protect Resilience/Enabling Environment for Communities/Contain Humanitarian Needs

**Available funds** – wrong timing



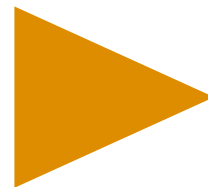
**Crisis Modifier**

**Available national and regional data** – wrong timing



**Monthly community-led early warning data**

**Available granular information** – lack of credibility



**Data-based funding allocation process**

**Available leadership** – lack of decision-making process

# Monthly Community-led Early Warning Data

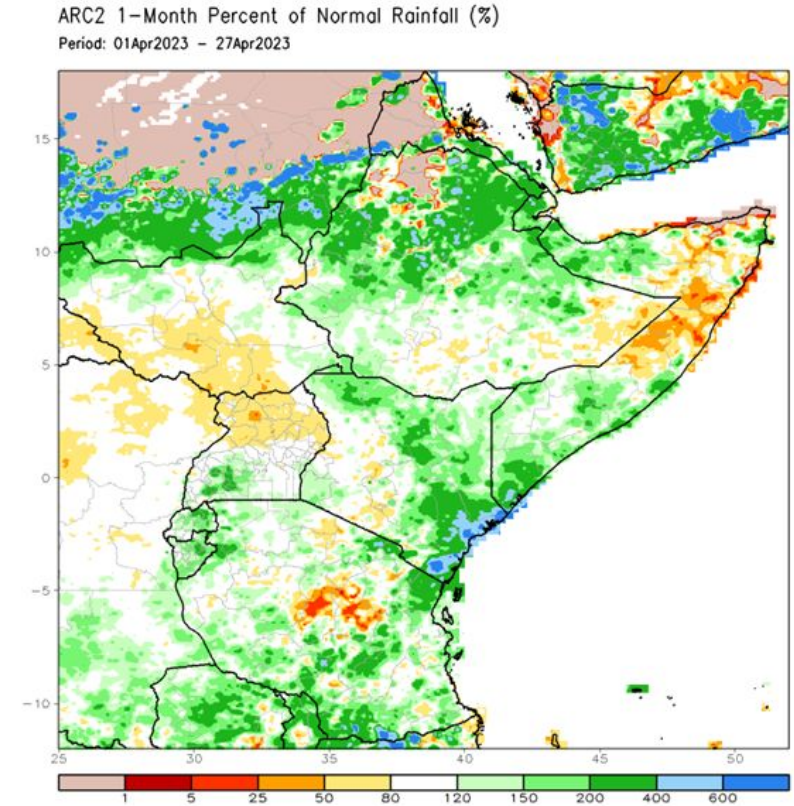
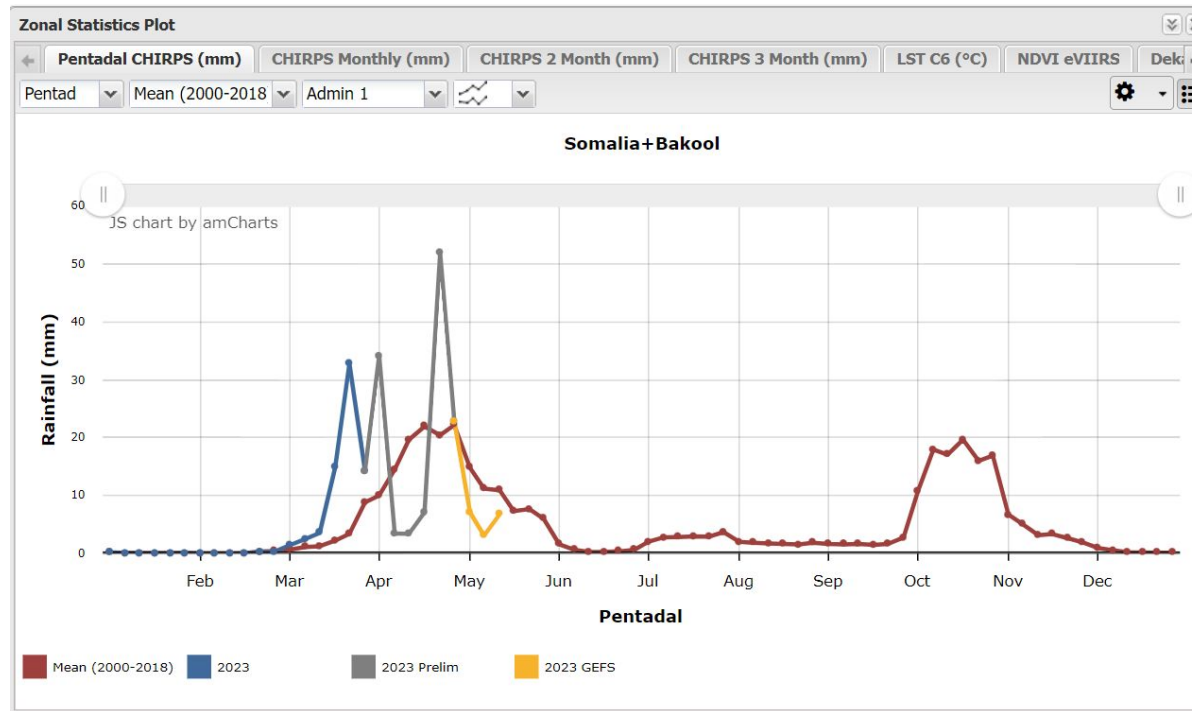
Where did we get?



**Data collection: community focal points**  
**Cleaning and triangulation: project managers**  
**Analysis and dashboard: Consortium data analyst – M&E**



# Quality Checks and Triangulation

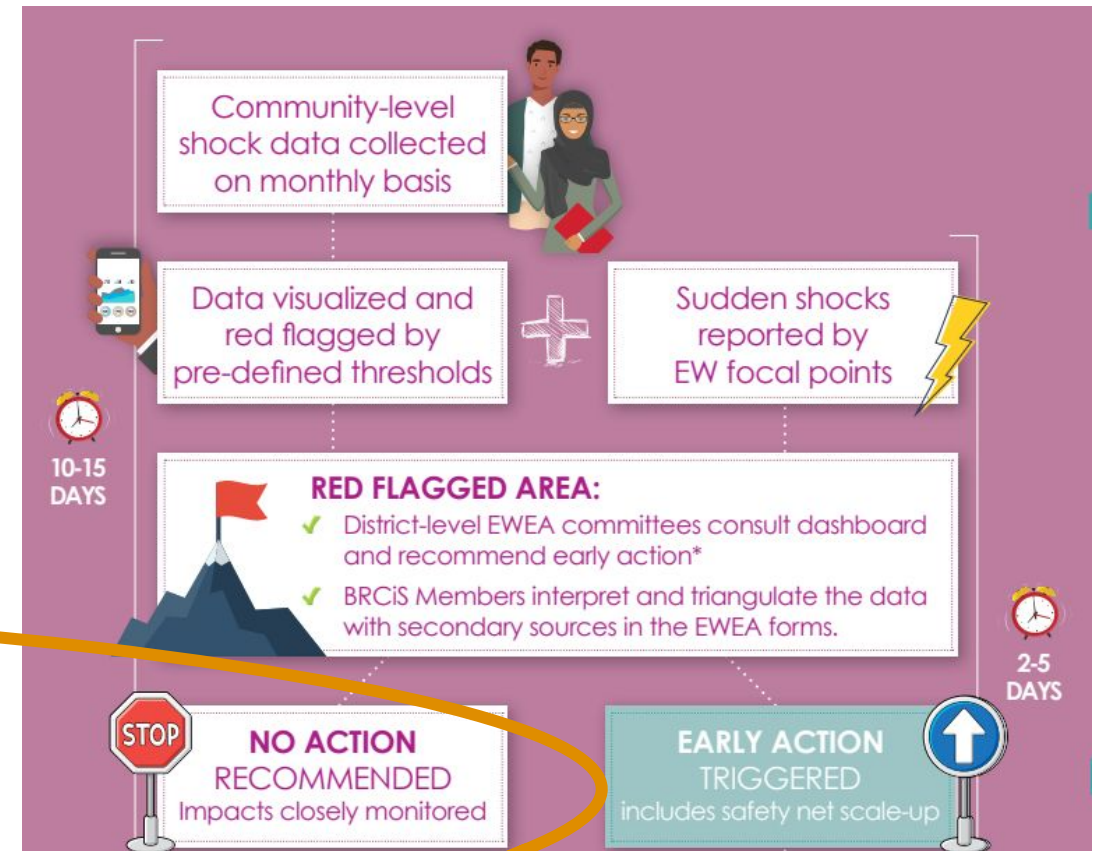
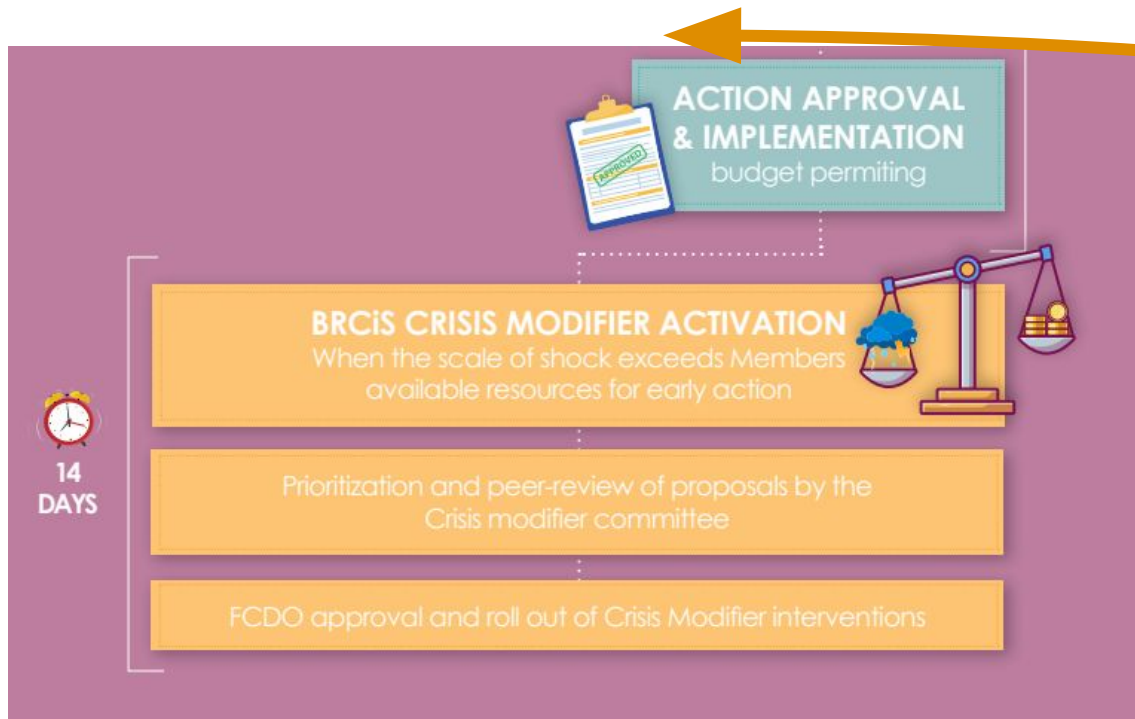


Bakool Rainfall 2023 / average

Analysis and dashboard: Consortium data analyst – M&E




# Data – Based Funding Allocation



Continuous information to donor  
Crisis modifier activation:  
less than 2 weeks

# Crisis Modification – A Spectrum

- 
1. DRR (CAPs);
  1. Community anticipatory action;
  1. Members re-programming;
  1. crisis modifier;
  1. Emergency funding.

## Informed by:

- shock frameworks with lead times;
- Contingency plans at community level;

No set action plan but guidelines to engage communities and other actors




# How Hard Was It?

---

## Challenges

- **Unforeseen shocks (Locust; Covid 19; very long drought) – continuous fundraising – intertwined / long impact**
- **Data triangulation, analysis, interpretation / forecasting**
- **Crisis modifier: new tool for donor too**
- **Lots of commitment and goodwill from MEAL and project staff!**

## Opportunities

- **Crisis modification a companion for resilience in complex crises**
  - **Multi-years projects offer the right background for more granular and actual early warning**
  - **Community led early / anticipatory action**
  - **Strengthen national / remote systems**
  - **Builds strong evidence base for advocacy**
- 



# Dashboard

[Home](#)[Summary](#)[Individual indicators](#)[District level analysis](#)[FMS level analysis](#)[Reporting](#)

## Welcome to the BRCiS Real-time Risk Monitoring and Early Action System

The BRCiS Real-time Risk Monitoring and Early Action System aims to provide timely and relevant community-driven early warning information to Consortium Members and anticipatory/early action stakeholders in Somalia. The system monitors climate and non-climate shocks and their effects to inform the triggering of early actions and Crisis Modifier activation. BRCiS has been collecting monthly early warning data from 34 districts in Somalia since November 2019 with financial support from the Foreign, Commonwealth & Development Office.

### Who are our members and implementing partners?

#### Members

- International Rescue Committee (IRC)
- Norwegian Refugee Council (NRC)
- Cooperazione e Sviluppo (CESVI)
- KAALO Aid and Development (KAALO)
- Gargaar Relief Development Organization (GREDO)
- Concern Worldwide (CWW)
- Save the Children International (SCI)
- Action Against Hunger (AAH)

#### Implementing partners

- Somaliland Skills Training Association (SOSTA)
- YouthLink
- Lifeline Gedo

8 ORGANISATIONS

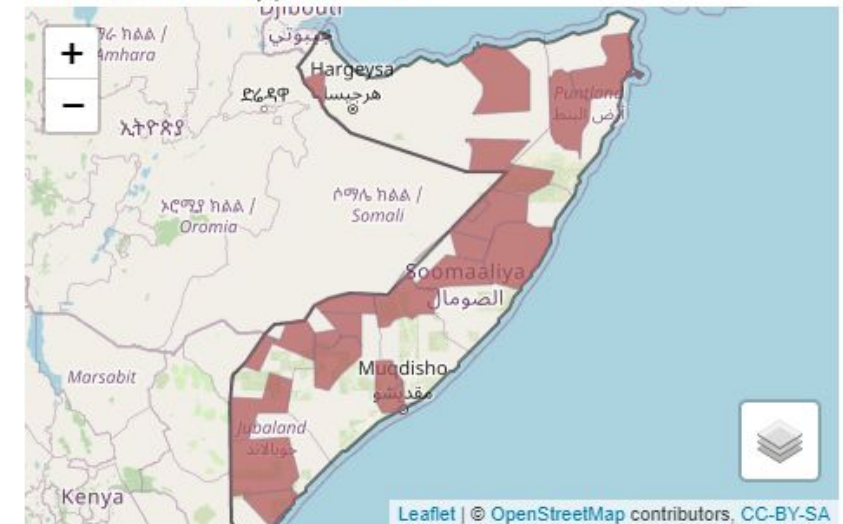
7 FEDERAL MEMBER STATES

34 DISTRICTS

[Where we work](#)

### Where do we work?

Hover mouse on the map for more details

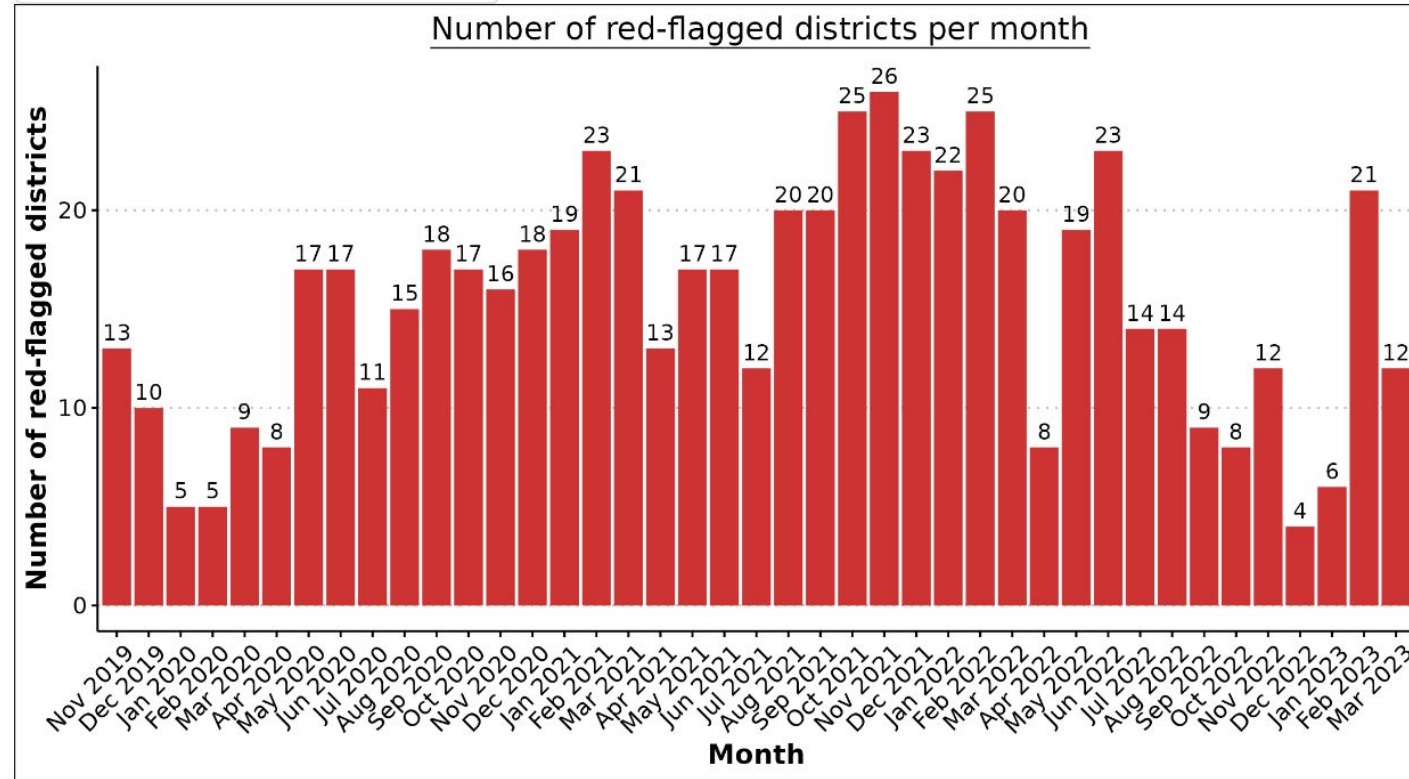


# Dashboard

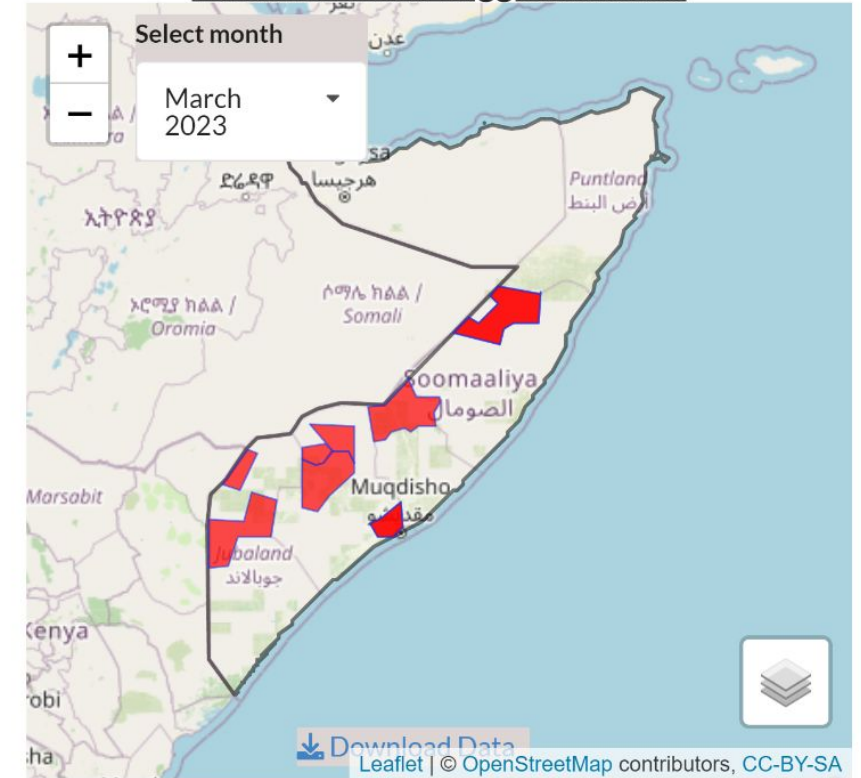
Select district

Overall overview

[Download plot](#)



## Location of red-flagged districts



Hover mouse on the districts for more details



# Data Collection

---


- How is data collected?
  - Formerly program staff (Early Warning Focal Points)
  - Currently community resilience committees
- How does the data get into the dashboard?
  - Collected through ODK
  - Passively uploaded to dashboard





# Data Use

---

- How is the data used?
    - What happens when districts are red flagged
    - Community consultations to make decisions about which communities to support
  - Who is using data now?
    - BRCiS consortium
  - Who *should* be using the data?
    - Other partners and consortiums
    - District-level authorities
- 

# Q&A

## BRCiS's Early Warning Dashboard



[People Illustrations by Storyset](https://storyset.com/people)

# Thank you!



This presentation was made possible by the generous support of the American people through the United States Agency for International Development (USAID). The contents are the responsibility of the Implementer-led Design, Evidence, Analysis, and Learning (IDEAL) Activity and do not necessarily reflect the views of USAID, the United States Government, the Government of Kenya, or the Intergovernmental Authority on Development.