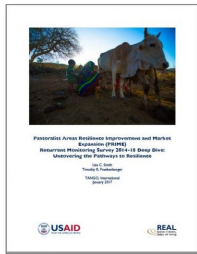


Resilience Evaluation, Analysis and Learning (REAL) Award

List of Resources

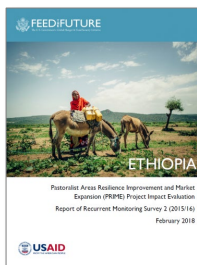
Strategic Priority I: Lead and support demand-driven resilience evidence generation and research



[Pastoralist Areas Resilience Improvement and Market Expansion \(PRIME\) Recurrent Monitoring Survey 2014-15 Deep Dive: Uncovering the Pathways to Resilience](#)

- ▶ [Webinar Slides](#)

Study examining which resilience capacities enabled households to recover from the 2014-15 drought, to inform future programming.



[PRIME Project Impact Evaluation: Report of Recurrent Monitoring Survey 2 \(RMS-2\)](#)

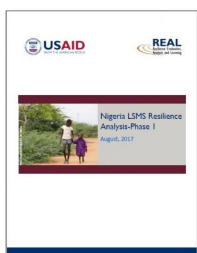
- ▶ [Brief](#)

RMS-2 collected real-time data during the drought's progression to provide key information for understanding household resilience dynamics.



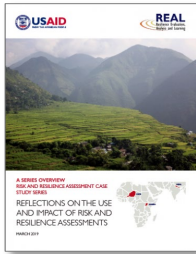
[Mali Resilience Research Report](#)

Research providing insights into factors that strengthen household and community resilience in Mali.



[Nigeria LSMS Resilience Analysis - Phase I](#)

Analysis examining secondary data to study what household and community characteristics are important sources of resilience when confronted by conflict and other shocks.



[Risk and Resilience Assessment Case Study Series Overview](#)

This case study series is taking a closer look at risk and resilience assessments to reflect on where and how these processes have positively impacted strategy and programs.



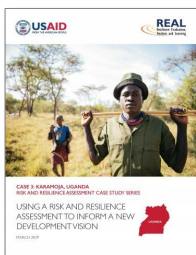
[Case Study 1: Nepal Risk and Resilience Assessment](#)

Case study focusing on the use of a risk and resilience assessment to inform a complex program start-up of the USAID Food for Peace-funded activity PAHAL, in mid and far west Nepal.



[Case Study 2: Niger Risk and Resilience Assessment](#)

Case study focusing on the use of a risk and resilience assessment to inform a country-level strategy in Niger.



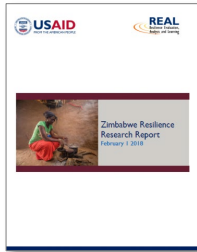
[Case Study 3: Uganda Risk and Resilience Assessment](#)

Case study focusing on the use of a risk and resilience assessment to inform a new development vision in Karamoja, Uganda.



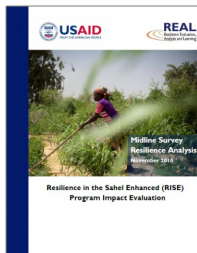
[Case Study 4: Northeast Nigeria Risk and Resilience Assessment](#)

Case study focusing on the operational challenges and solutions to applying a risk and resilience assessment amidst a protracted crisis in Borno State.



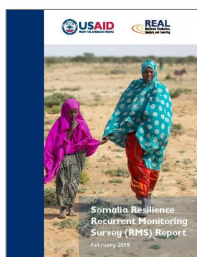
[Zimbabwe Resilience Research Report](#)

Study documenting the detrimental effects of prolonged drought in four provinces of Zimbabwe.



[Midline Survey Resilience Analysis: Resilience in the Sahel Enhanced \(RISE\) Program Impact Evaluation](#)

Resilience analysis of the midline data set collected for the impact evaluation of the Resilience in the Sahel Enhanced (RISE) initiative.



[Somalia Resilience Recurrent Monitoring Survey \(RMS\) Report](#)

- [Brief](#)

Findings from a two-year study of resilience dynamics in Somalia. The study is a follow-up to the baseline evaluation of the Enhancing Resilience and Economic Growth in Somalia program (ERECS).



[Ethiopia Pastoralist Areas Resilience Improvement and Market Expansion \(PRIME\) Project Impact Evaluation Endline Survey Report](#)

- [Brief](#)

Report drawing on the data collected as part of the PRIME Impact Evaluation Baseline and Endline Surveys, as well as two Recurrent Monitoring Surveys.



[Resilience in the Sahel Enhanced \(RISE\) Program Impact Evaluation: Report of Recurrent Monitoring Survey](#)

- [Brief](#)

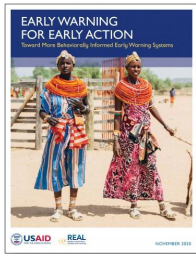
Analysis of the Recurrent Monitoring Survey (RMS) 2018-19 data set collected as part of the impact evaluation of the Resilience in the Sahel Enhanced (RISE) initiative.



[What Facilitates Integration in Resilience Programs? A Case Study on Nepal](#)

- [Webinar Recording](#)

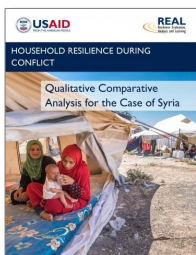
Report synthesizing the experiences of two programs implemented by Mercy Corps: USAID's Office for Food for Peace-funded Promoting Agriculture, Health and Alternative Livelihoods (PAHAL) and Margaret A. Cargill Philanthropies-funded Managing Risk through Economic Development-II (M-RED II).



[Early Warning for Early Action: Toward More Behaviorally Informed Early Warning Systems](#)

- [Webinar Recording](#)

Paper building on decades of psychology and social and behavioral change theory and practice to propose a social and behaviorally informed approach to early warning systems (EWS) design, development, and implementation.



[Household Resilience during Conflict: Qualitative Comparative Analysis for the Case of Syria](#)

- [FSQCA Calibration Guide](#)

Paper exploring the utility of applying Qualitative Comparative Analysis using fuzzy sets (fsQCA) for understanding complex causality and the conditions that support resilience in humanitarian contexts.



[PREG Partnerships Case Study](#)

Case study exploring factors that enable effective collaboration and coordination for the Partnership for Resilience and Economic Growth (PREG) initiative in northern Kenya.



[Sharing to Survive: Investigating the Role of Social Networks During Yemen's Humanitarian Crisis](#)

- [Report available in Arabic](#)

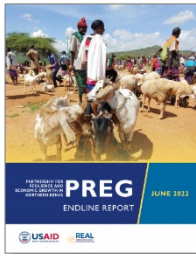
This study examines the ways in which Yemenis have relied on their social connections and social networks to survive during the ongoing humanitarian crisis.



[Informal Social Protection Networks & Resilience in Conflict-Affected Contexts: Lessons from South Sudan and Yemen](#)

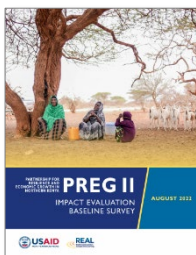
- [Associated Fact Sheet](#)

This synthesis draws on research from South Sudan and Yemen to offer lessons and recommendations for aid actors to better account for and help strengthen informal social protection networks in conflict-affected contexts.



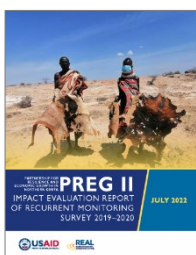
[Partnership for Resilience and Economic Growth \(PREG\) Initiative in Northern Kenya Endline Report](#)

Report presenting findings from a pre-post analysis of PREG resilience programming activities for its first five-year phase (i.e., PREG I).



[Partnership for Resilience and Economic Growth \(PREG\) II Impact Evaluation: Baseline Survey](#)

Report presenting the baseline resilience analysis of the second phase of the PREG project in Northern Kenya.



[Partnership for Resilience and Economic Growth \(PREG\) Initiative in Northern Kenya II: Impact Evaluation Report of Recurrent Monitoring Survey 2019-2020](#)

Report documenting the analysis of data from the first year of the Recurrent Monitoring Survey in nine arid and semi-arid lands counties in Kenya.

Strategic Priority 2: Provide evidence-based thought leadership, analysis, and technical guidance in frontier resilience issues



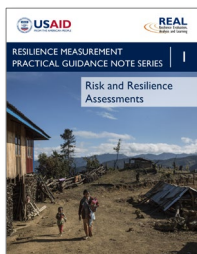
[An Overview of the Recurrent Monitoring Survey \(RMS\)](#)

An overview of RMS purposes, methodology, data analysis, and application of findings for adaptive management.



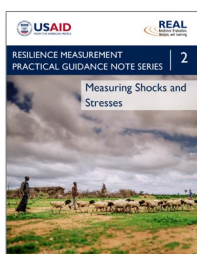
[Resilience Measurement Practical Guidance Note Series: An Overview](#)

Rationale for and overview of the Resilience Measurement Practical Guidance Note Series.



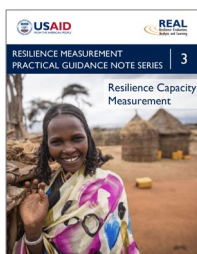
[Resilience Measurement Practical Guidance Note 1: Risk and Resilience Assessments](#)

Guidance Note 1 describes key elements and value of risk and resilience assessments, providing resources for additional, deeper learning.



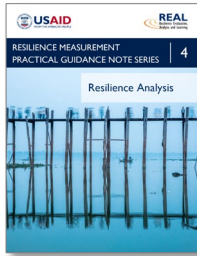
[Resilience Measurement Practical Guidance Note 2: Measuring Shocks and Stresses](#)

Guidance Note 2 describes how to measure and analyze shocks and stresses.



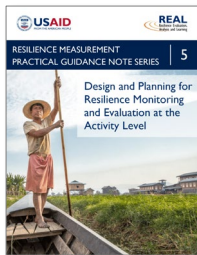
[Resilience Measurement Practical Guidance Note 3: Resilience Capacity Measurement](#)

Guidance Note 3 describes how to measure resilience capacities.



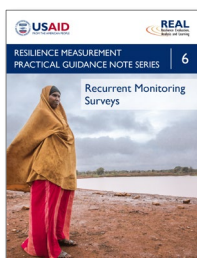
[Resilience Measurement Practical Guidance Note 4: Resilience Analysis](#)

Guidance Note 4 describes approaches for conducting resilience analysis.



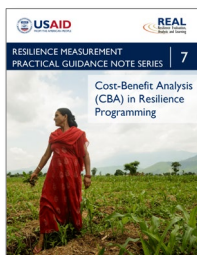
[Resilience Measurement Practical Guidance Note 5: Design and Planning for Resilience Monitoring and Evaluation at the Activity Level](#)

Guidance Note 5 walks readers through the steps to be taken during the program cycle to plan for monitoring and evaluation—to better understand whether the resilience approach is contributing to households' and communities' ability to mitigate shocks and stresses.



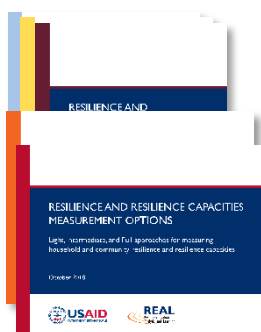
[Resilience Measurement Practical Guidance Note 6: Recurrent Monitoring Surveys](#)

Guidance Note 6 draws on examples from multiple country and project contexts of what worked well, what challenges emerged, and what solutions were developed while implementing an RMS.



[Resilience Measurement Practical Guidance Note 7: Cost-Benefit Analysis \(CBA\) in Resilience Programming](#)

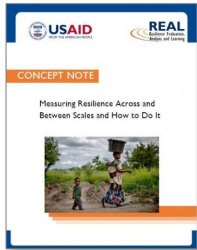
Guidance Note 7 is a resource for policymakers and implementing organizations looking to identify cost-effective resilience interventions and prioritize development resources using an economic analysis tool called Cost-Benefit Analysis.



[Resilience and Resilience Capacities Measurement Options: Light, Intermediate, and Full approaches for measuring household and community resilience and resilience capacities](#)

- ▶ [Overview Postcard](#)
- ▶ [Methodological Guide](#)
- ▶ [Enumerator Guide](#)
- ▶ [Household Questionnaire](#)
- ▶ [Community Questionnaire](#)

A set of documents intended to be used together for measuring and analyzing resilience in relevant USAID-funded activities.



[Concept Note: Measuring Resilience Across and Between Scales and How to Do It](#)

Concept note discussing the importance and the challenges related to the measurement of resilience across and between scales.



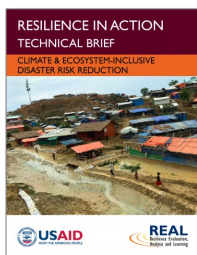
[Resilience in Action Technical Brief Series: Financial Services](#)

Brief aiming to better equip practitioners and financial service providers to consider risk and resilience in financial service program design, as well as which meso- and macro-level mechanisms can help support financial systems resilience.



[Resilience in Action Technical Brief Series: Gender Equity & Social Inclusion](#)

Brief focusing on programmatic shifts at the intersection of resilience, gender equity, and social inclusion, which are essential in situations like the 2004 tsunami or extreme drought conditions.



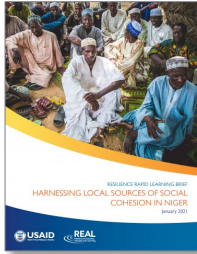
[Resilience in Action Technical Brief Series: Climate & Ecosystem-Inclusive Disaster Risk Reduction](#)

Brief examining what is required to integrate a resilience approach to Climate and Ecosystems-Inclusive Disaster Risk Reduction (CEDRR).



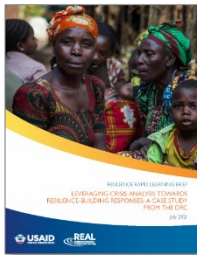
[Rapid Resilience Learning Brief: Role of Markets in Strengthening Social Resilience Capacities in Northeast Nigeria](#)

Brief documenting how a combination of livelihood support and economic collectives, like village savings and loan associations, can develop financial and social sources of resilience in crisis contexts.



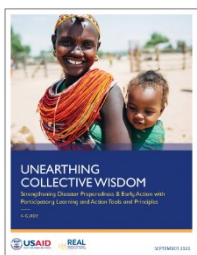
[Rapid Resilience Learning Brief: Harnessing Local Sources of Social Cohesion in Niger](#)

Brief examining factors that contribute to local-level variation in social cohesion in order to improve programming.



[Rapid Resilience Learning Brief: Leveraging Crisis Analysis Towards Resilience-building Responses](#)

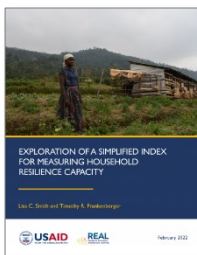
Brief provides a case study in an analytical method, Crisis Analytics at Mercy Corps, and its application to protracted crises in the DRC.



[Unearthing Collective Wisdom: Strengthening Disaster Preparedness & Early Action with Participatory Learning and Action Tools and Principles](#)

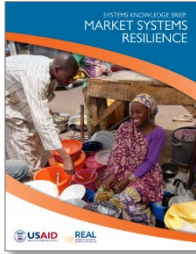
- ▶ [Customizable Word Version](#)
- ▶ [Customizable PowerPoint Presentation](#)
- ▶ [Customizable PowerPoint Presentation – Data Analysis](#)
- ▶ [Guide and presentations in French](#)

Set of tools and resources to identify proper early actions and the determinants of those behaviors to improve the likelihood that affected populations heed early warnings and take proper action to protect themselves and their resources.



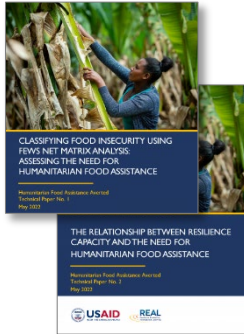
[Exploration of a Simplified Index for Measuring Household Resilience Capacity](#)

This note explores the possibility of calculating a simplified index of resilience capacity to reduce the time and financial costs of administering surveys.



[Systems Knowledge Brief: Market Systems Resilience](#)

This brief presents the key findings from market systems resilience measurement and analysis pilots in four fragile and conflict affected contexts, as well as overall reflections and recommendations.



Humanitarian Food Assistance Averted Technical Reports

- No. 1: [Classifying Food Insecurity Using FEWS NET Matrix Analysis: Assessing the Need for Humanitarian Food Assistance](#)
- No. 2: [The Relationship between Resilience Capacity and the Need for Humanitarian Food Assistance](#)

This research aims to test the hypothesis that investments in resilience programming reduce the need for humanitarian food assistance in vulnerable populations.



[Nutrition and Resilience: Discussion Brief on Better Integration of Nutrition into Resilience-Strengthening Programs](#)

This discussion brief intends to promote a greater understanding of the relationships between nutrition and resilience and inform debate among policymakers, technical advisors, and practitioners responsible for designing, implementing, or evaluating program approaches to strengthening both.

Strategic Priority 3: Co-create and facilitate the use of resilience knowledge to improve design and adaptive management of resilience investments



[Asia Resilience Review](#)

This review builds on learnings from the Asia Resilience Monitoring, Evaluation and Learning workshop held in Bangkok, Thailand in July 2017.



[Resilience Evidence Forum \(REF\)](#)

The REF was an in-person event held in Washington, DC in October 2017. Participants shared emergent evidence and methodological approaches to resilience analysis; discussed ramifications of evidence for resilience policy and programming; and identified future directions and priorities for the resilience community of practice.

- ▶ [Agenda](#)
- ▶ [Program Booklet](#)
- ▶ [Resilience Evidence Forum Report](#)



[REAL Short Course in Resilience Measurement](#)

Interactive webinar sessions aimed to support participants in applying learnings from the Resilience Measurement Guidance Note Series.

- ▶ Session 1: Risk and Resilience Assessments – [Slides](#), [Recording](#)
- ▶ Session 2: Design and Planning for Resilience Monitoring & Evaluation at the Activity Level – [Slides](#), [Recording](#)
- ▶ Session 3: Measuring Shocks, Stresses, and Resilience Capacities & Analyzing Resilience – [Slides](#), [Recording](#)
- ▶ Session 4: Recurrent Monitoring Surveys – [Slides](#), [Recording](#)



[Insights into Implementing Recurrent Monitoring Surveys in USAID-funded Activities](#)

Webinar discussing the practical aspects of planning and implementing a recurrent monitoring survey (RMS)

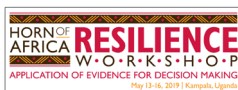
- ▶ Webinar [Slides](#), [Recording](#), [Summary Notes](#)



[Resilience and Resilience Capacities Measurement Options Launch](#)

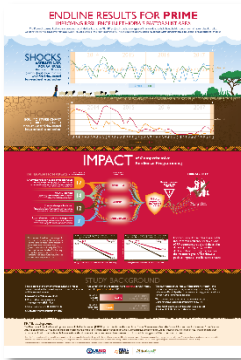
The launch event of the Resilience and Resilience Capacities Measurement Options included a presentation and panel discussion.

- ▶ Webinar [Slides](#), [Recording](#)



[Horn of Africa Resilience Workshop: Application of Evidence for Decision Making](#)

This in-person event convened approximately 100 stakeholders in Kampala, Uganda to understand emerging resilience research in the Horn of Africa and explore trends and themes across countries. A follow-up event (online and in-person) was held in Washington, DC that presented key findings for audiences not present in Uganda.



- ▶ [All workshop materials](#), including: agenda, presentation slides, presented evidence (reports, briefs, infographics), photos, post-event summary brief, etc.
- ▶ [Materials and recordings from the workshop in Washington, DC](#)
- ▶ [Event summary video](#)
- ▶ Infographic: [Resilience Capacities in the Horn of Africa Region](#)
- ▶ Infographic: [Building Resilience to Shocks and Stresses](#)
- ▶ Infographic: [Endline Results for PRIME for Improving Resilience in Ethiopia's Pastoralist Area](#)



[Strengthening Resilience in Niger and Burkina Faso: Results from the RISE I Recurrent Monitoring Surveys 2018-2019](#)

Webinar discussing key findings from the RISE I (Resilience in the Sahel Enhanced) RMS, including a presentation and panel discussion.

- ▶ [Webinar materials and recordings in French and English](#)



[REAL's Resilience in Protracted Crises Discussion Series](#)

A series of three online events based on REAL's Resilience Rapid Learning Series and lessons learned for building resilience in protracted crises and conflict-affected settings. All events were held in English and French.

- ▶ [Risk Analysis for Resilience Programming in Protracted Crises](#)
- ▶ [Social Cohesion Lays the Foundation for Peace and Resilience](#)
- ▶ [How Livelihoods Support is Bolstered by Social Sources of Resilience](#)



[Sharing to Survive: The Role of Social Networks during the Yemen Crisis](#)

Webinar exploring the findings from the report on the role of social connections and social networks during Yemen's humanitarian crisis.

- ▶ [Webinar materials and recordings in Arabic and English](#)



[Interactive Dashboard: Synthesis of Evidence from Resilience Programming](#)

Interactive dashboard synthesizing quantitative and qualitative data generated through REAL's resilience research. The dashboard is intended to summarize learnings from resilience programming and measurement in a practical and accessible format.

DISCLAIMER

This document is made possible by the generous support and contribution of the American people through the United States Agency for International Development (USAID). The contents of the materials produced through the REAL Award do not necessarily reflect the views of USAID or the United States Government.

ABOUT THE REAL AWARD (September 2, 2016 – December 31, 2022)

The Resilience Evaluation, Analysis and Learning (REAL) Associate Award is a consortium-led effort funded by the USAID Center for Resilience. It was established to respond to growing demand among USAID Missions, host governments, implementing organizations, and other key stakeholders for rigorous, yet practical, monitoring, evaluation, strategic analysis, and capacity building support. Led by Save the Children, REAL draws on the expertise of its partners: Food for the Hungry, Mercy Corps, and TANGO International.



ABOUT THE REAL 2 AWARD (September 1, 2020 – August 31, 2025)

The Resilience Evaluation, Analysis and Learning (REAL) Associate Award is a consortium-led effort funded by the USAID Center for Resilience. It was established to respond to growing demand among USAID Missions, host governments, implementing organizations, and other key stakeholders for rigorous, yet practical, monitoring, evaluation, strategic analysis, and capacity building support. Led by Save the Children, REAL draws on the expertise of its partners: Mercy Corps and TANGO International.

