

# Welcome to the *Evidence Building for Cash and Markets for WASH in Emergencies* Webinar

December 8th, 2020

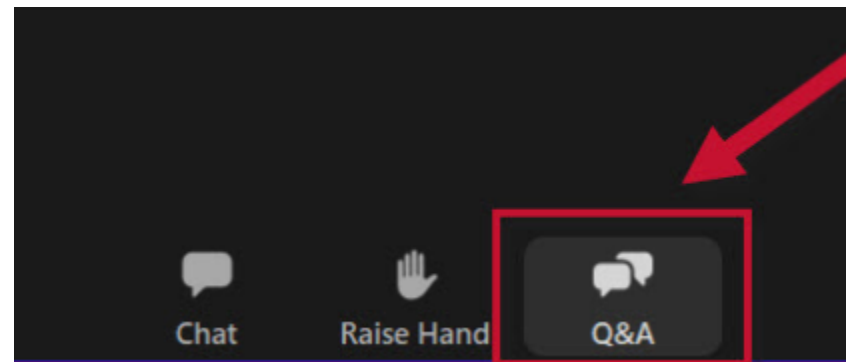
Today's Co-Hosts:



# Webinar agenda

---

- **Introduction** (GWC Coordinator, PRO-WASH, CaLP)
- **Presentation of the study** (consultants)
  - Methodology
  - Findings
  - Way forward
- **Q&A**



# Evidence Building for Cash and Markets for WASH in Emergencies

---

## PRESENTATION OF FINDINGS



# Introduction

---

- Market-based programming (MBP) for WASH in emergencies
- MBP in the WASH sector in general
- Barriers to scaling-up MBP for WASH in emergencies

# Study outputs (click to download from the [GWC market TWIG page](#))



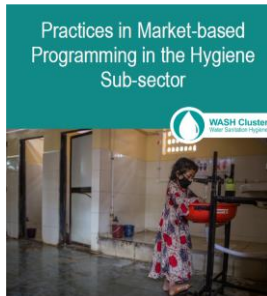
Practices in MBP in the Water Sub-sector



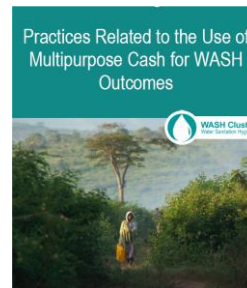
Practices in MBP in the Sanitation Sub-sector



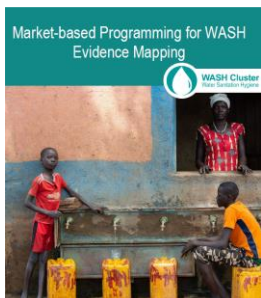
Full study (PDF portfolio)



Practices in MBP in the Hygiene Sub-sector



Practices related to the use of Multipurpose Cash for WASH Outcomes



MBP for WASH Evidence Mapping



Summary of findings



Annexes

# I | Methodology

# MBP for WASH: key definitions

---

# MARKET AND OTHER ASSESSMENTS



## RESPONSE ANALYSIS

DIRECT SERVICE DELIVERY



MARKET BASED MODALITY



TECHNICAL SUPPORT



BEHAVIOR CHANGE



ADVOCACY

MARKET SUPPORT

CVA

PRIVATE,  
PUBLIC &  
COMMUNITY

SOCIAL  
MARKETING

MARKET  
POLICIES

MICROFINANCE

LOCAL LABOUR  
SKILLS

LOCAL  
PROCUREMENT

WASH /  
MULTISECTOR  
VOUCHERS

WASH SPECIFIC  
CASH

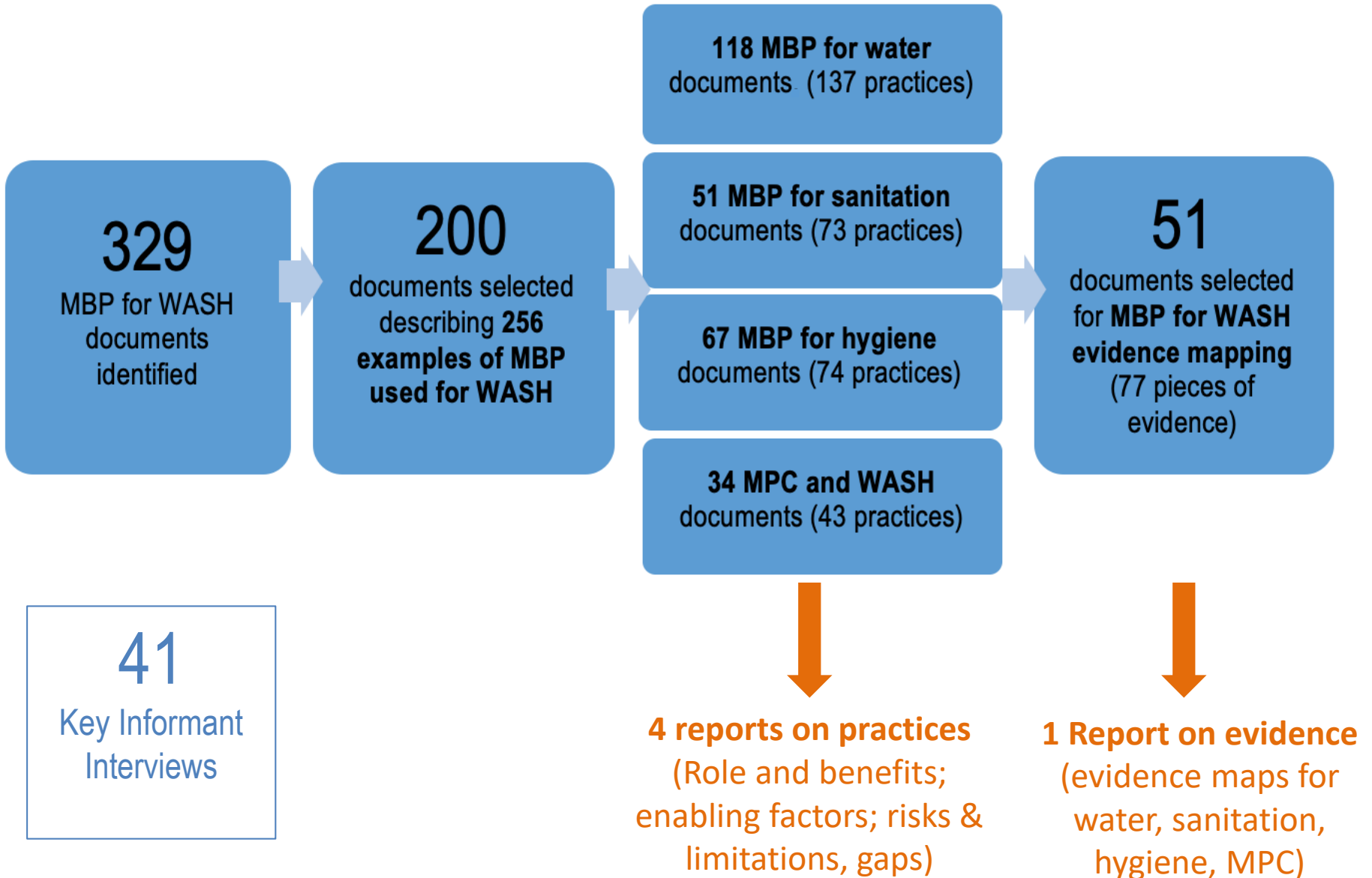
MPC



## IMPLEMENTATION & MONITORING

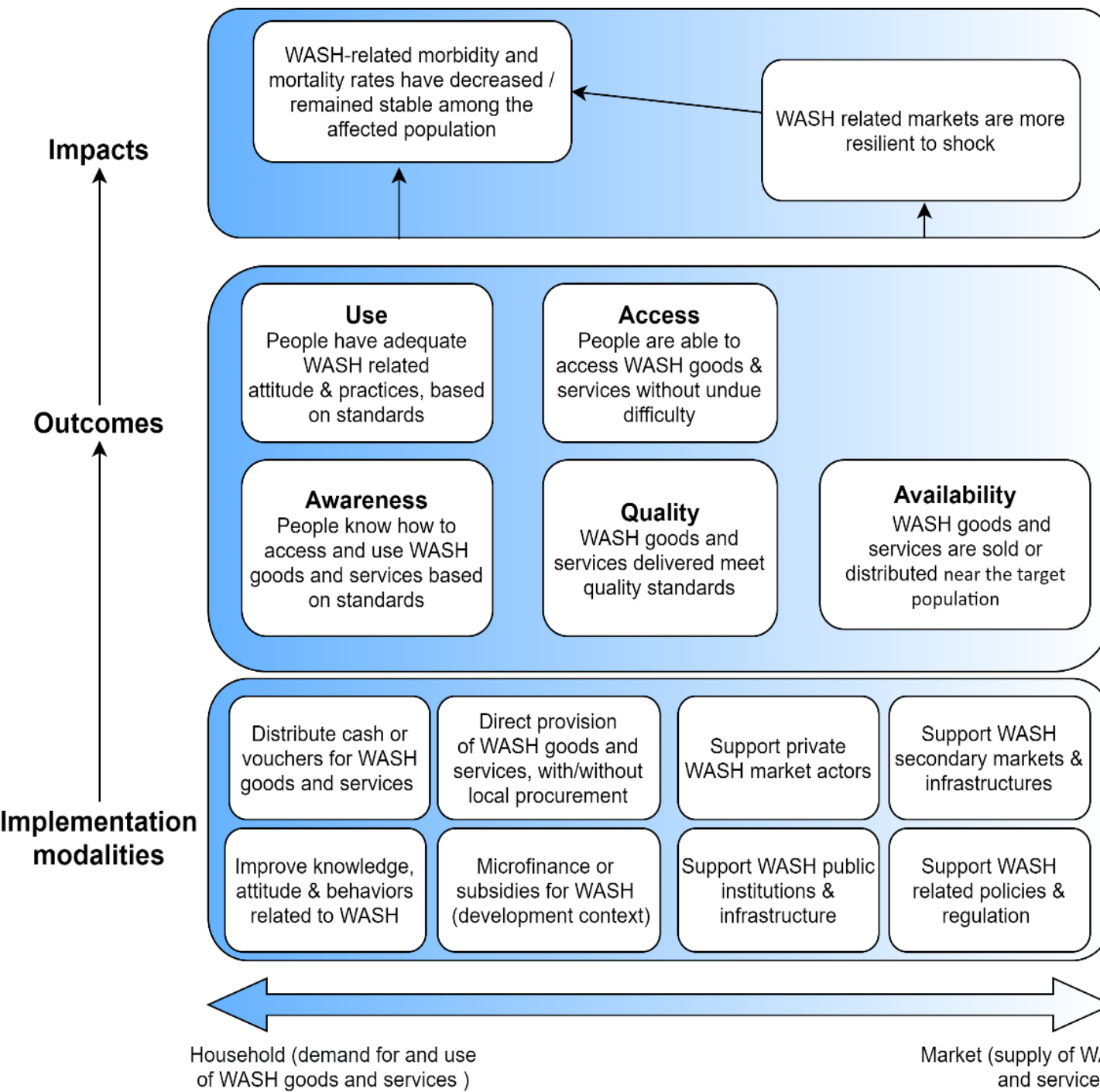


# Review of documentation and key informant interviews



# MBP for WASH: causal framework

---



- Analysis of effects
- ‘Strength of evidence’ score
- Analysis of Practices

## II Findings

# WASH Market support practices



# WASH Market support practices

## Market support modalities reviewed:



## Market support in emergency is enabled by:

- Pre-existing WASH markets
- Preparedness / recovery phase
- Complementary to CVA modalities
- Stable contexts and long project duration (>3 years)
- Flexible procurement rules
- Coordination with other sectors
- Used as exit strategy

## Market support is less adapted when:

- Water and sanitation markets are unregulated
- Low demand / low income environment

# Cash and Voucher Assistance (CVA) practices



# Cash and Voucher Assistance (CVA) practices

## CVA modalities reviewed

WASH-SPECIFIC  
VOUCHERS

MULTISECTOR  
VOUCHERS

WASH SPECIFIC  
CASH

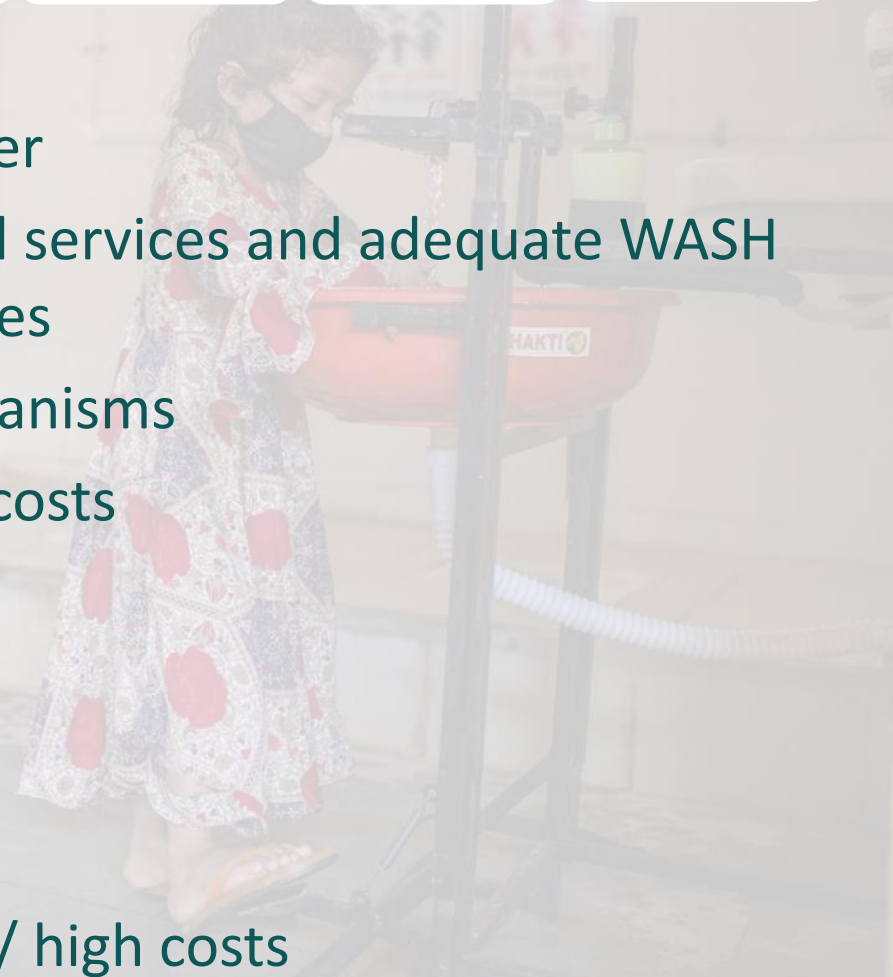
MULTI-PURPOSE  
CASH

## CVA is enabled when:

- Financial access is main barrier
- Demand for WASH goods and services and adequate WASH knowledge, attitudes, practices
- Joint / existing delivery mechanisms
- MPC for regular, predictable costs

## CVA is less adapted when:

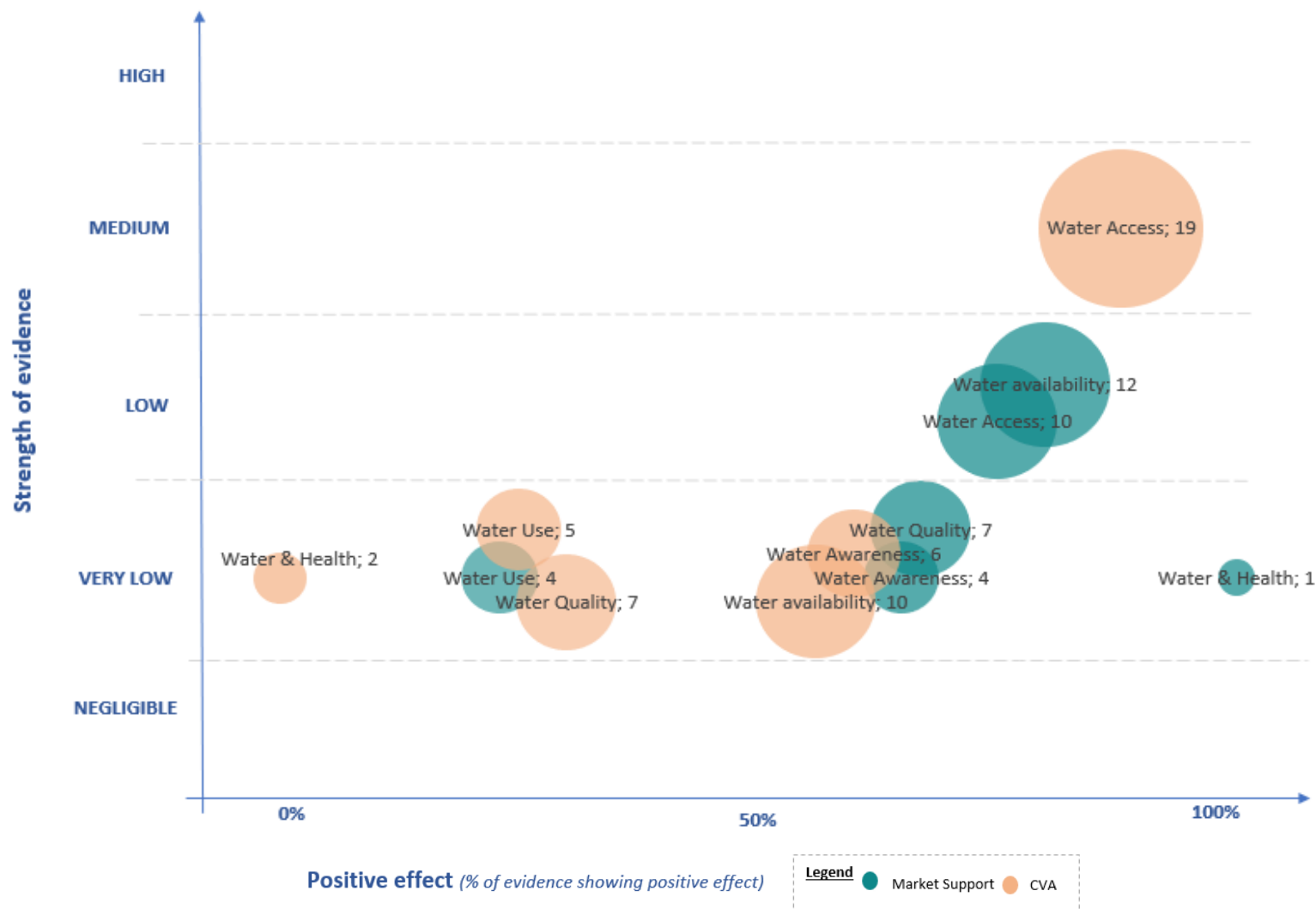
- Supply-side barriers
- Behaviour change required
- MPC less adapted to one-off / high costs





# 5 x evidence maps

## Example: EFFECT OF MARKET-BASED MODALITIES ON WATER SUPPLY OUTCOMES



# Emerging evidence

Modality	Sub-sector	Outcomes				
		Availability	Access	Quality	Use	Health
CVA modalities	Water		+			
	Sanitation		+	+		
	Hygiene	+	+			
Market support modalities	Water	+	+			
	Sanitation					
	Hygiene	+	+	+		

**Table: Emerging evidence of positive effect of MBP on WASH outcomes & impacts in emergency**

(Low to medium 'strength of evidence' with > 75% of evidence showing a positive effect).

## Gaps in practice and evidence

---

- **Added value** of MBP
- Monitoring of **quality & use**
- Level of **readiness** of WASH teams
- Support WASH markets in **preparedness**
- **First phase** response
- **WASH complementary programming**
- **Coordinated use of MBP across sectors** during assessment and response analysis
- Use of MBP to **improve WASH market resilience**

# III | Way Forward

# Gaps in practice and evidence ; Priority research areas

- **Added value** of MBP
- Monitoring of **quality & use**

1

- Level of **readiness** of WASH teams
- Support WASH markets in **preparedness**
- **First phase** response

2

- **WASH complementary programming**
- **Coordinated use of MBP across sectors** during assessment and response analysis

3

- Use of MBP to **improve resilience**

4

# Recommendations for the GWC

## Generating new knowledge based on evidence

- Operational research
- Knowledge management

## Developing further capacity on MBP in the WASH sector

- Monitoring systems
- MBPWIE trainings scale up

## Boosting the inclusion of market-sensitive approaches in **WASH operational responses**

- Institutional & programmatic preparedness
- Assessment & response analysis coordination

# Acknowledgements

Access the full study here:

[https://washcluster.net/twigs/cash and market](https://washcluster.net/twigs/cash_and_market)

*THANK YOU FOR YOUR PARTICIPATION*