



USAID Resilience Evidence Forum
Monday, October 2, 2017
Washington, DC

Resilience, Graduation, and Social Protection



Moderator: Lauren Whitehead, BRAC USA

Panelists: John Meyer, CARE Ethiopia; Erwin Knippenberg, Cornell University; Thomas Bossuoy, World Bank

SESSION **PANEL**



Lauren Whitehead,
BRAC USA



John Meyer,
CARE Ethiopia



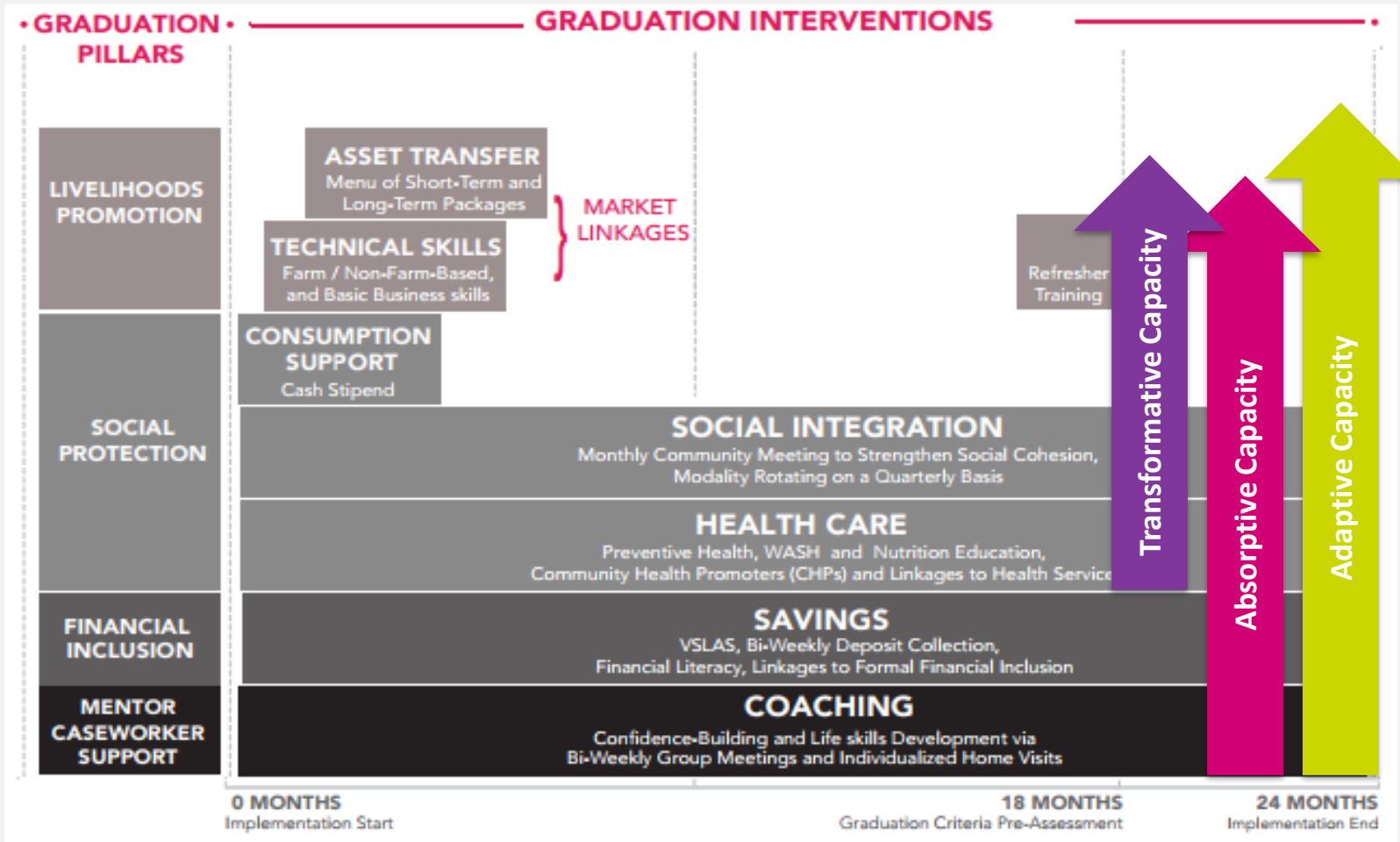
Erwin Knippenberg,
Cornell University



Thomas Bossuroy,
World Bank

REDUCING CHRONIC VULNERABILITY

Graduation is predicated upon providing a set of time-bound, tailored, and sequenced interventions that offer essential support along four foundational pillars of the approach.



CASE STUDY: SOUTH SUDAN

Graduation participants outperformed peers in spite of outbreak of renewed conflict and violence.

Challenges

- Renewed conflict and violence
- Displacement and migration
- Disrupted access to markets
- Rising healthcare needs
- Hyperinflation (90%)

Impacts

- More productive and secure sustainable livelihoods
- Increased knowledge, skills and confidence
- Strengthened community systems

Critical Inputs

- Savings & asset accumulation
- Health and nutrition education
- Community integration
- Communal agriculture inputs
- Peer training facilitation
- Joint decision-making training

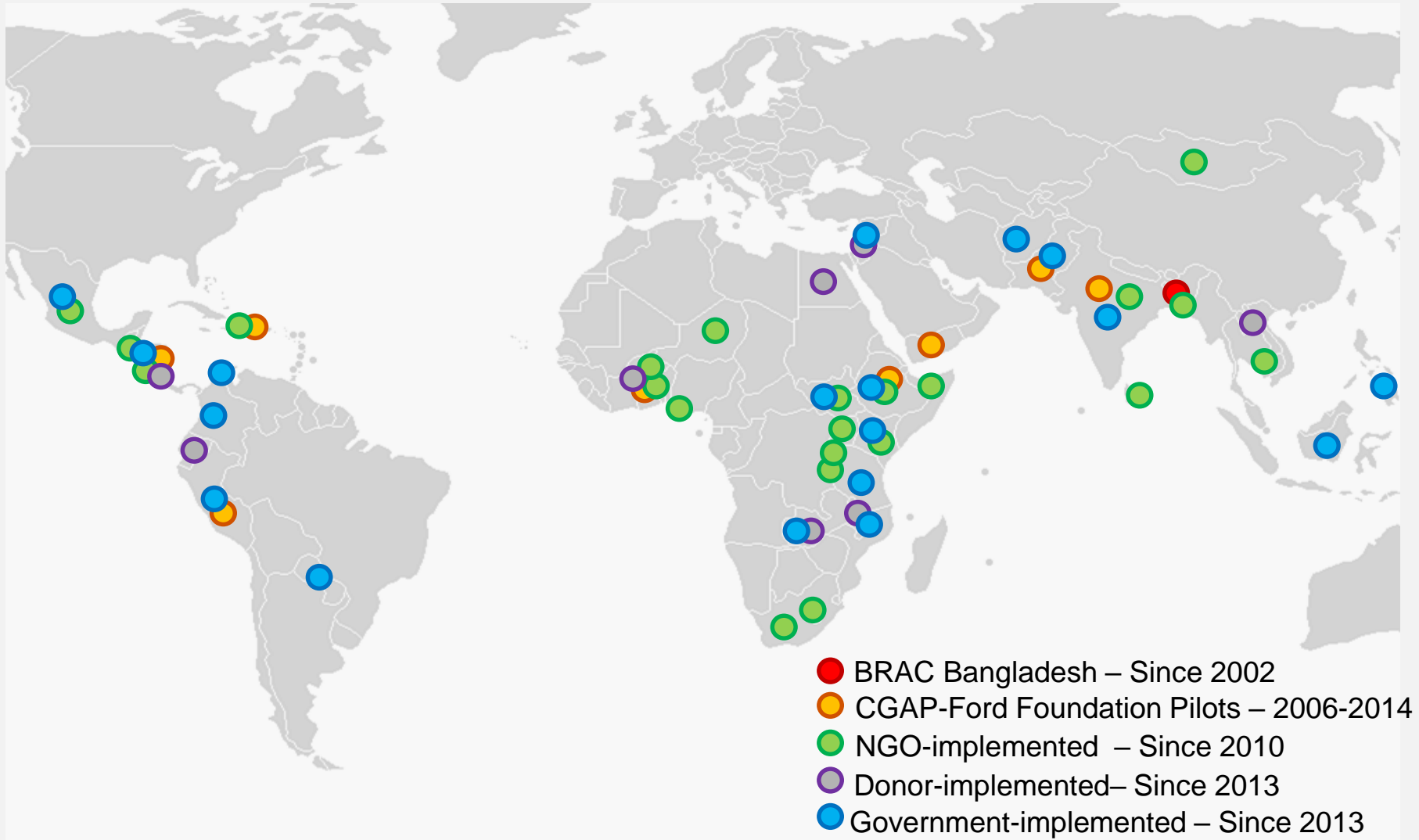


Key Results

- ✓ 97% experienced increase in consumption
- ✓ 71% accessing 2+ income sources
- ✓ 61% trained community peer trainers
- ✓ 53% less likely to have underweight children CU5 compared to control
- ✓ 90% engaged in community committees, links to government/private sector
- ✓ Increased sustainable agriculture
- ✓ Free access to rotating health fund

GLOBAL GRADUATION

With 60+ programs in 40 countries, Graduation is being integrated into development programs around the world.



ENABLING ENVIRONMENT

While Graduation can be implemented in diverse contexts, certain enabling factors contribute to greater propensity for success, particularly key considerations in designing for resilience.



Features of An Enabling Environment

- ✓ Existing social protection programs
- ✓ Local implementation partners
- ✓ Ability to conduct market assessment
- ✓ Government extension workers
- ✓ Inter-ministerial coordination
- ✓ Case management (frontline staff)
- ✓ Budget allocation

Design Considerations (Lesotho):

- National CCTs and unemployment services
- Asset packages and training adapted to climate change-affected ecological zones
- Inability to access local and regional markets
- Atypical demography affecting labor pool caused by “missing middle” due to HIV/AIDS
- Social capital rebuilt through collectives and support groups in response to epidemic

Design Considerations (Kenya):

- Existing national cash transfer (HSNP)
- Recurrent climate-induced shocks
- Climate agriculture-affected agriculture for semi-pastoralist and pastoralist communities
- Remote and hard-to-reach communities
- Gendered labor practices and care burden
- Insufficient availability of basic services



Join us in the movement to end ultra-poverty.

Contact us to learn more.

BRAC Centre

75 Mohakhali
Dhaka 1212
Bangladesh

BRAC USA

110 William Street, 18th Floor
New York, NY 10038
USA